

Anti-Notch1 Antibody
Catalog # ABO10596**Specification**

Anti-Notch1 Antibody - Product Information

Application	WB
Primary Accession	P46531
Host	Rabbit
Reactivity	Human
Clonality	Polyclonal
Format	Lyophilized

Description

Rabbit IgG polyclonal antibody for Neurogenic locus notch homolog protein 1(NOTCH1) detection. Tested with WB in Human.

Reconstitution

Add 0.2ml of distilled water will yield a concentration of 500ug/ml.

Anti-Notch1 Antibody - Additional Information

Gene ID 4851

Other Names

Neurogenic locus notch homolog protein 1, Notch 1, hN1, Translocation-associated notch protein TAN-1, Notch 1 extracellular truncation, NEXT, Notch 1 intracellular domain, NICD, NOTCH1, TAN1

Calculated MW

272505 MW KDa

Application Details

Western blot, 0.1-0.5 µg/ml, Human

Subcellular Localization

Cell membrane ; Single-pass type I membrane protein .

Tissue Specificity

In fetal tissues most abundant in spleen, brain stem and lung. Also present in most adult tissues where it is found mainly in lymphoid tissues.

Protein Name

Neurogenic locus notch homolog protein 1(Notch 1/hN1)

Contents

Each vial contains 5mg BSA, 0.9mg NaCl, 0.2mg Na₂HPO₄, 0.05mg Thimerosal, 0.05mg NaN₃.

Immunogen

A synthetic peptide corresponding to a sequence in the middle region of human Notch1(2487-2506aa QHSYSSPVDNTPSHQLQVPE).

Purification

Immunogen affinity purified.

Cross Reactivity

No cross reactivity with other proteins

Storage

At -20°C for one year. After reconstitution, at 4°C for one month. It can also be aliquotted and stored frozen at -20°C for a longer time. Avoid repeated freezing and thawing.

Sequence Similarities

Belongs to the NOTCH family.

Anti-Notch1 Antibody - Protein Information

Name NOTCH1

Synonyms TAN1

Function

Functions as a receptor for membrane-bound ligands Jagged-1 (JAG1), Jagged-2 (JAG2) and Delta-1 (DLL1) to regulate cell-fate determination. Upon ligand activation through the released notch intracellular domain (NICD) it forms a transcriptional activator complex with RBPJ/RBPSUH and activates genes of the enhancer of split locus. Affects the implementation of differentiation, proliferation and apoptotic programs. Involved in angiogenesis; negatively regulates endothelial cell proliferation and migration and angiogenic sprouting. Involved in the maturation of both CD4(+) and CD8(+) cells in the thymus. Important for follicular differentiation and possibly cell fate selection within the follicle. During cerebellar development, functions as a receptor for neuronal DNER and is involved in the differentiation of Bergmann glia. Represses neuronal and myogenic differentiation. May play an essential role in postimplantation development, probably in some aspect of cell specification and/or differentiation. May be involved in mesoderm development, somite formation and neurogenesis. May enhance HIF1A function by sequestering HIF1AN away from HIF1A. Required for the THBS4 function in regulating protective astrocytogenesis from the subventricular zone (SVZ) niche after injury. Involved in determination of left/right symmetry by modulating the balance between motile and immotile (sensory) cilia at the left-right organiser (LRO).

Cellular Location

Cell membrane {ECO:0000250|UniProtKB:Q01705}; Single-pass type I membrane protein. Late endosome membrane; Single-pass type I membrane protein. Note=Non-activated receptor is targeted for lysosomal degradation via the endosomal pathway; transport from late endosomes to lysosomes requires deubiquitination by USP12.

Tissue Location

In fetal tissues most abundant in spleen, brain stem and lung. Also present in most adult tissues where it is found mainly in lymphoid tissues

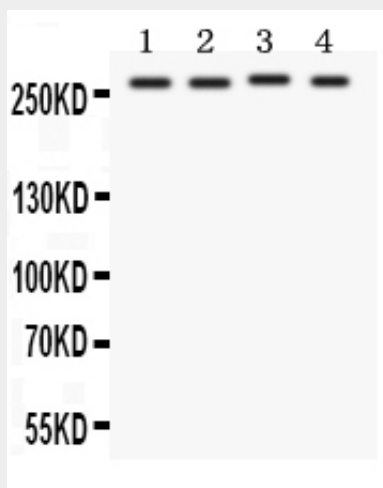
Anti-Notch1 Antibody - Protocols

Provided below are standard protocols that you may find useful for product applications.

- [Western Blot](#)

- [Blocking Peptides](#)
- [Dot Blot](#)
- [Immunohistochemistry](#)
- [Immunofluorescence](#)
- [Immunoprecipitation](#)
- [Flow Cytometry](#)
- [Cell Culture](#)

Anti-Notch1 Antibody - Images



Anti-Notch1 antibody, ABO10596, Western blotting
All lanes: Anti Notch1 (ABO10596) at 0.5ug/ml
Lane 1: MCF-7 Whole Cell Lysate at 40ug
Lane 2: HELA Whole Cell Lysate at 40ug
Lane 3: JURKAT Whole Cell Lysate at 40ug
Lane 4: COLO320 Whole Cell Lysate at 40ug
Predicted bind size: 272KD
Observed bind size: 272KD

Anti-Notch1 Antibody - Background

Notch proteins are single-pass transmembrane receptors that regulate cell fate decisions during development. The Notch family includes 4 receptors, NOTCH1, NOTCH2, NOTCH3, and NOTCH4, whose ligands include JAG1, JAG2, DLL1), DLL3, and DLL4. Notch homolog 1, translocation-associated(NOTCH1), is a human gene encoding a single-pass transmembrane receptor. It functions as a receptor for membrane bound ligands, and may play multiple roles during development. NOTCH1 may normally coordinates the process of somitogenesis, and the activated Notch 1 and Notch 3 promote differentiation of progenitor cells into astroglia.