

Anti-Bcl-XS Antibody
Catalog # ABO10609**Specification**

Anti-Bcl-XS Antibody - Product Information

Application	WB, IHC-P
Primary Accession	Q07817
Host	Rabbit
Reactivity	Human, Mouse, Rat
Clonality	Polyclonal
Format	Lyophilized

Description

Rabbit IgG polyclonal antibody for Bcl-2-like protein 1(BCL2L1) detection. Tested with WB, IHC-P in Human;Mouse;Rat.

Reconstitution

Add 0.2ml of distilled water will yield a concentration of 500ug/ml.

Anti-Bcl-XS Antibody - Additional Information

Gene ID 598

Other Names

Bcl-2-like protein 1, Bcl2-L-1, Apoptosis regulator Bcl-X, BCL2L1, BCL2L, BCLX

Calculated MW

26049 MW KDa

Application Details

Immunohistochemistry(Paraffin-embedded Section), 0.5-1 µg/ml, Human, By Heat

Western blot, 0.1-0.5 µg/ml, Human, Rat, Mouse

Subcellular Localization

Isoform Bcl-X(L): Mitochondrion inner membrane . Mitochondrion outer membrane . Mitochondrion matrix . Cytoplasmic vesicle, secretory vesicle, synaptic vesicle membrane . Cytoplasm, cytosol . Cytoplasm, cytoskeleton, microtubule organizing center, centrosome. Nucleus membrane ; Single-pass membrane protein ; Cytoplasmic side . After neuronal stimulation, translocates from cytosol to synaptic vesicle and mitochondrion membrane in a calmodulin-dependent manner (By similarity). Localizes to the centrosome when phosphorylated at Ser-49. .

Tissue Specificity

Bcl-X(S) is expressed at high levels in cells that undergo a high rate of turnover, such as developing lymphocytes. In contrast, Bcl-X(L) is found in tissues containing long-lived postmitotic cells, such as adult brain.

Protein Name

Bcl-2-like protein 1(Bcl2-L-1)

Contents

Each vial contains 5mg BSA, 0.9mg NaCl, 0.2mg Na₂HPO₄, 0.05mg Thimerosal, 0.05mg NaN₃.

Immunogen

A synthetic peptide corresponding to a sequence in the middle region of human Bcl-XS(120-130aa YQSFEQDTFVE), different from the related rat and mouse sequences by one amino acid.

Purification

Immunogen affinity purified.

Cross Reactivity

No cross reactivity with other proteins

Storage

At -20°C for one year. After receipt, at 4°C for one month. It can also be aliquotted and stored frozen at -20°C for a longer time. Avoid repeated freezing and thawing.

Sequence Similarities

Belongs to the Bcl-2 family.

Anti-Bcl-XS Antibody - Protein Information

Name BCL2L1

Synonyms BCL2L, BCLX

Function

Potent inhibitor of cell death. Inhibits activation of caspases. Appears to regulate cell death by blocking the voltage- dependent anion channel (VDAC) by binding to it and preventing the release of the caspase activator, CYC1, from the mitochondrial membrane. Also acts as a regulator of G2 checkpoint and progression to cytokinesis during mitosis. Isoform Bcl-X(S) promotes apoptosis.

Cellular Location

[Isoform Bcl-X(L)]: Mitochondrion inner membrane. Mitochondrion outer membrane Mitochondrion matrix. Cytoplasmic vesicle, secretory vesicle, synaptic vesicle membrane. Cytoplasm, cytosol. Cytoplasm, cytoskeleton, microtubule organizing center, centrosome. Nucleus membrane; Single-pass membrane protein; Cytoplasmic side. Note=After neuronal stimulation, translocates from cytosol to synaptic vesicle and mitochondrion membrane in a calmodulin-dependent manner (By similarity). Localizes to the centrosome when phosphorylated at Ser-49

Tissue Location

Bcl-X(S) is expressed at high levels in cells that undergo a high rate of turnover, such as developing lymphocytes. In contrast, Bcl-X(L) is found in tissues containing long-lived postmitotic cells, such as adult brain

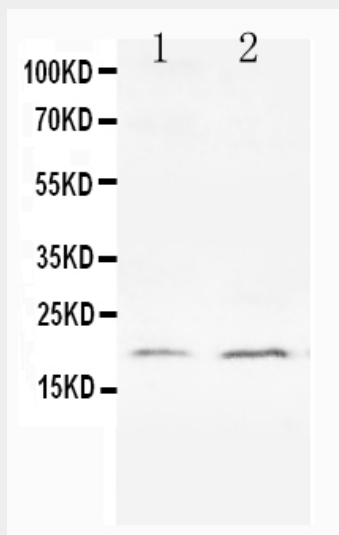
Anti-Bcl-XS Antibody - Protocols

Provided below are standard protocols that you may find useful for product applications.

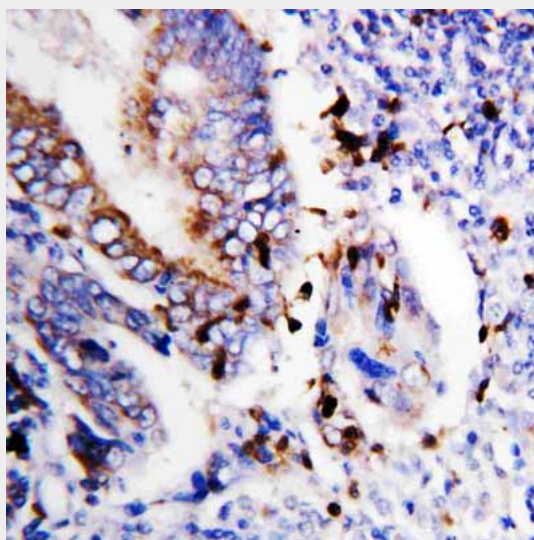
- [Western Blot](#)
- [Blocking Peptides](#)
- [Dot Blot](#)
- [Immunohistochemistry](#)

- [Immunofluorescence](#)
- [Immunoprecipitation](#)
- [Flow Cytometry](#)
- [Cell Culture](#)

Anti-Bcl-XS Antibody - Images



Anti-Bcl-XS antibody, ABO10609, Western blotting All lanes: Anti Bcl-XS (ABO10609) at 0.5ug/ml
Lane 1: HELA Whole Cell Lysate at 40ug
Lane 2: PC-12 Whole Cell Lysate at 40ug
Predicted bind size: 19KD
Observed bind size: 19KD



Anti-Bcl-XS antibody, ABO10609, IHC(P) IHC(P): Human Colon Cancer Tissue

Anti-Bcl-XS Antibody - Background

Bcl-xS is the second mRNA species of Bcl-x protein, which encodes a protein that inhibits the ability of bcl-2 to enhance the survival of growth factor-deprived cells. In vivo, bcl-xS mRNA is expressed at high levels in cells that undergo a high rate of turnover, such as developing lymphocytes. Apoptosis was associated with increased protein expression of Bcl-X/S, an early marker of apoptosis, and release of cytochrome c into the cytosol of infected HB cells.