

**Anti-SSX2 Antibody**  
**Catalog # ABO10612****Specification**

---

**Anti-SSX2 Antibody - Product Information**

Application	WB, IHC-P
Primary Accession	<a href="#">Q16385</a>
Host	Rabbit
Reactivity	Human
Clonality	Polyclonal
Format	Lyophilized

**Description**

Rabbit IgG polyclonal antibody for Protein SSX2(SSX2) detection. Tested with WB, IHC-P in Human.

**Reconstitution**

Add 0.2ml of distilled water will yield a concentration of 500ug/ml.

**Anti-SSX2 Antibody - Additional Information**

**Gene ID** 6757;727837

**Other Names**

Protein SSX2, Cancer/testis antigen 5.2, CT5.2, Synovial sarcoma, X breakpoint 2, Tumor antigen HOM-MEL-40, SSX2, SSX2A

**Calculated MW**

21620 MW KDa

**Application Details**

Immunohistochemistry(Paraffin-embedded Section), 0.5-1 µg/ml, Human, By Heat<br><br>Western blot, 0.1-0.5 µg/ml, Human<br>

**Subcellular Localization**

Nucleus.

**Tissue Specificity**

Expressed at high level in the testis. Expressed at low level in thyroid. Not detected in tonsil, colon, lung, spleen, prostate, kidney, striated and smooth muscles. Detected in rhabdomyosarcoma and fibrosarcoma cell lines. Not detected in mesenchymal and epithelial cell lines.

**Protein Name**

Protein SSX2

**Contents**

Each vial contains 5mg BSA, 0.9mg NaCl, 0.2mg Na<sub>2</sub>HPO<sub>4</sub>, 0.05mg Thimerosal, 0.05mg NaN<sub>3</sub>.

**Immunogen**

A synthetic peptide corresponding to a sequence at the C-terminus of human SSX2(157-184aa

NREAQEKEERRGTAHRWSSQNTHNIGRF).

**Purification**

Immunogen affinity purified.

**Cross Reactivity**

No cross reactivity with other proteins

**Storage**

**At -20°C for one year. After reconstitution, at 4°C for one month. It can also be aliquotted and stored frozen at -20°C for a longer time. Avoid repeated freezing and thawing.**

**Sequence Similarities**

Belongs to the SSX family.

**Anti-SSX2 Antibody - Protein Information**

**Name** SSX2

**Synonyms** SSX2A

**Function**

Could act as a modulator of transcription.

**Cellular Location**

Nucleus.

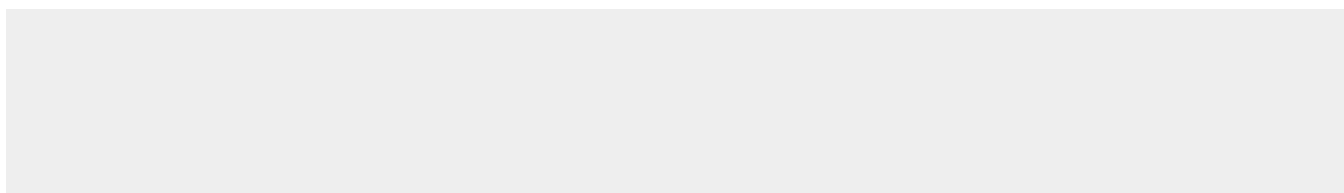
**Tissue Location**

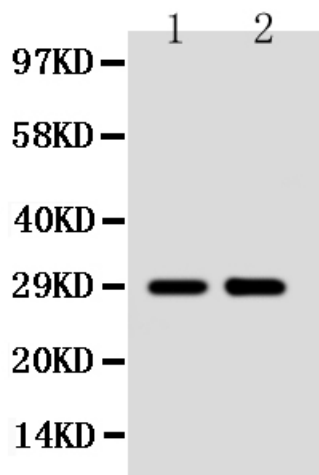
Expressed at high level in the testis. Expressed at low level in thyroid. Not detected in tonsil, colon, lung, spleen, prostate, kidney, striated and smooth muscles. Detected in rhabdomyosarcoma and fibrosarcoma cell lines. Not detected in mesenchymal and epithelial cell lines

**Anti-SSX2 Antibody - Protocols**

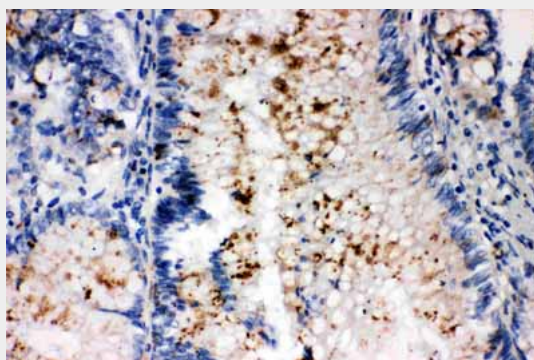
Provided below are standard protocols that you may find useful for product applications.

- [Western Blot](#)
- [Blocking Peptides](#)
- [Dot Blot](#)
- [Immunohistochemistry](#)
- [Immunofluorescence](#)
- [Immunoprecipitation](#)
- [Flow Cytometry](#)
- [Cell Culture](#)

**Anti-SSX2 Antibody - Images**



Anti-SSX2 antibody, ABO10612, Western blotting Lane 1: MCF-7 Cell Lysate Lane 2: HELA Cell Lysate



Anti-SSX2 antibody, ABO10612, IHC(P) IHC(P): Human Intestinal Cancer Tissue

### Anti-SSX2 Antibody - Background

Synovial sarcoma, X breakpoint 2, also known as SSX2, is a human gene. The product of this gene belongs to the family of highly homologous synovial sarcoma X(SSX) breakpoint proteins. SSX1, SSX2 and SSX4 genes have been involved in the t(X;18) translocation characteristically found in all synovial sarcomas. The SSX1 and SSX2 genes encode closely related proteins(81% identity) of 188 amino acids that are rich in charged amino acids. The N-terminal portion of each SSX protein exhibits homology to the Kruppel-associated box(KRAB), a transcriptional repressor domain previously found only in Kruppel-type zinc finger proteins.