

Anti-CD34 Antibody
Catalog # ABO10660

Specification

Anti-CD34 Antibody - Product Information

Application	WB, IHC-P, IHC-F
Primary Accession	P28906
Host	Rabbit
Reactivity	Human, Mouse, Rat
Clonality	Polyclonal
Format	Lyophilized

Description

Rabbit IgG polyclonal antibody for Hematopoietic progenitor cell antigen CD34(CD34) detection. Tested with WB, IHC-P, IHC-F in Human;Mouse;Rat.

Reconstitution

Add 0.2ml of distilled water will yield a concentration of 500ug/ml.

Anti-CD34 Antibody - Additional Information

Gene ID 947

Other Names

Hematopoietic progenitor cell antigen CD34, CD34, CD34

Calculated MW

40716 MW KDa

Application Details

Immunohistochemistry(Frozen Section), 0.5-1 µg/ml, Mouse, Rat, Human
Immunohistochemistry(Paraffin-embedded Section), 0.5-1 µg/ml, Human, Mouse, Rat, By Heat
Western blot, 0.1-0.5 µg/ml, Human, Mouse, Rat

Subcellular Localization

Membrane; Single-pass type I membrane protein.

Tissue Specificity

Selectively expressed on hematopoietic progenitor cells and the small vessel endothelium of a variety of tissues.

Protein Name

Hematopoietic progenitor cell antigen CD34

Contents

Each vial contains 5mg BSA, 0.9mg NaCl, 0.2mg Na₂HPO₄, 0.05mg Thimerosal, 0.05mg NaN₃.

Immunogen

A synthetic peptide corresponding to a sequence at the C-terminus of human CD34(366-382aa QATSRNGHSARQHVVAD), identical to the related mouse and rat sequences.

Purification

Immunogen affinity purified.

Cross Reactivity

No cross reactivity with other proteins

Storage

At -20°C for one year. After r°Constitution, at 4°C for one month. It°Can also be aliquotted and stored frozen at -20°C for a longer time.Avoid repeated freezing and thawing.

Sequence Similarities

Belongs to the CD34 family.

Anti-CD34 Antibody - Protein Information

Name CD34

Function

Possible adhesion molecule with a role in early hematopoiesis by mediating the attachment of stem cells to the bone marrow extracellular matrix or directly to stromal cells. Could act as a scaffold for the attachment of lineage specific glycans, allowing stem cells to bind to lectins expressed by stromal cells or other marrow components. Presents carbohydrate ligands to selectins.

Cellular Location

Membrane; Single-pass type I membrane protein.

Tissue Location

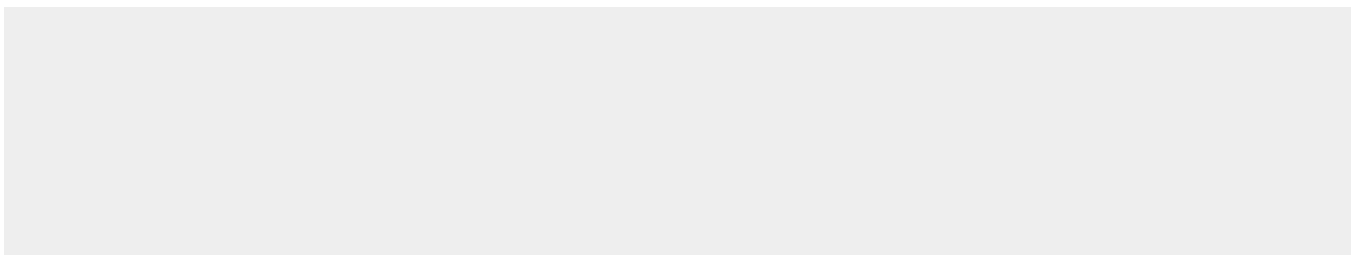
Selectively expressed on hematopoietic progenitor cells and the small vessel endothelium of a variety of tissues

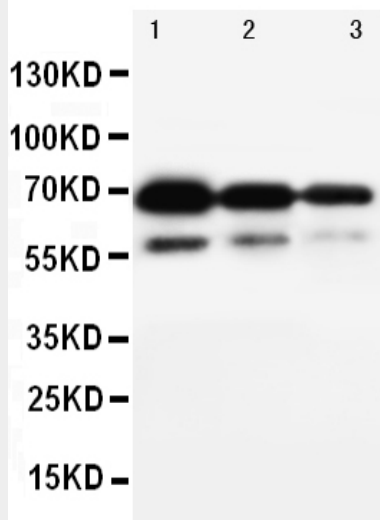
Anti-CD34 Antibody - Protocols

Provided below are standard protocols that you may find useful for product applications.

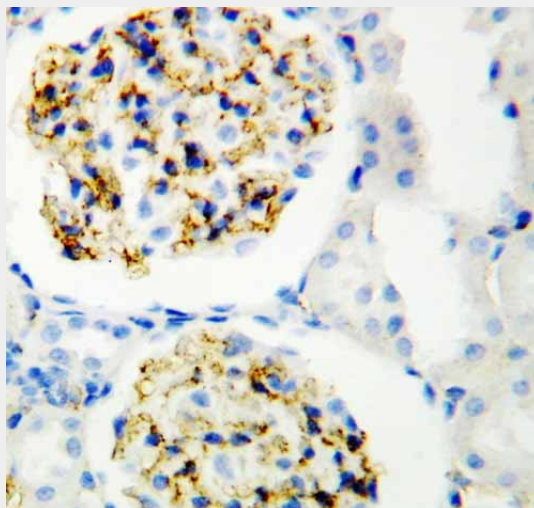
- [Western Blot](#)
- [Blocking Peptides](#)
- [Dot Blot](#)
- [Immunohistochemistry](#)
- [Immunofluorescence](#)
- [Immunoprecipitation](#)
- [Flow Cytometry](#)
- [Cell Culture](#)

Anti-CD34 Antibody - Images

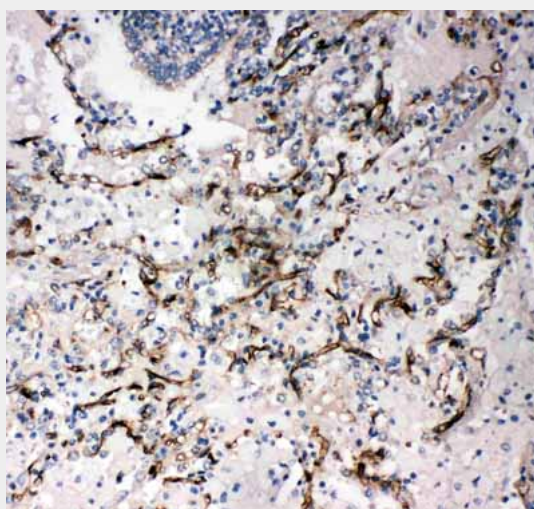




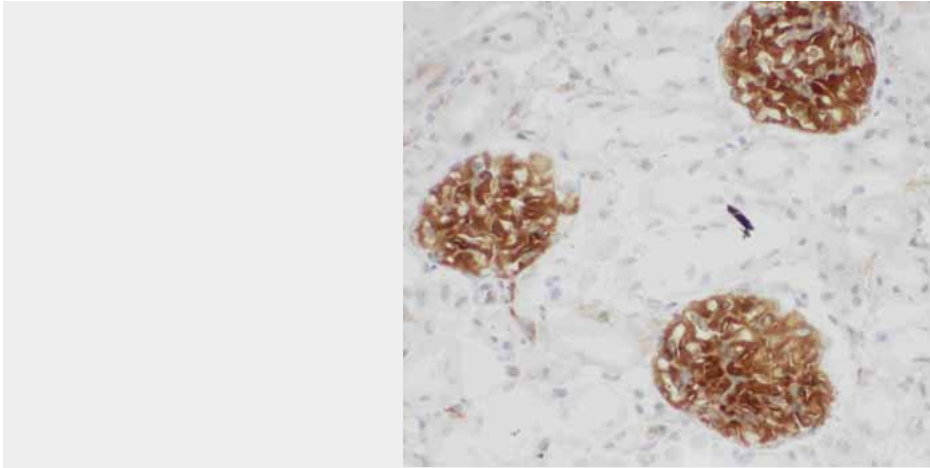
Anti-CD34 antibody, ABO10660, Western blotting Lane 1: Recombinant Human CD34 Protein 10ng Lane 2: Recombinant Human CD34 Protein 5ng Lane 3: Recombinant Human CD34 Protein 2.5ng



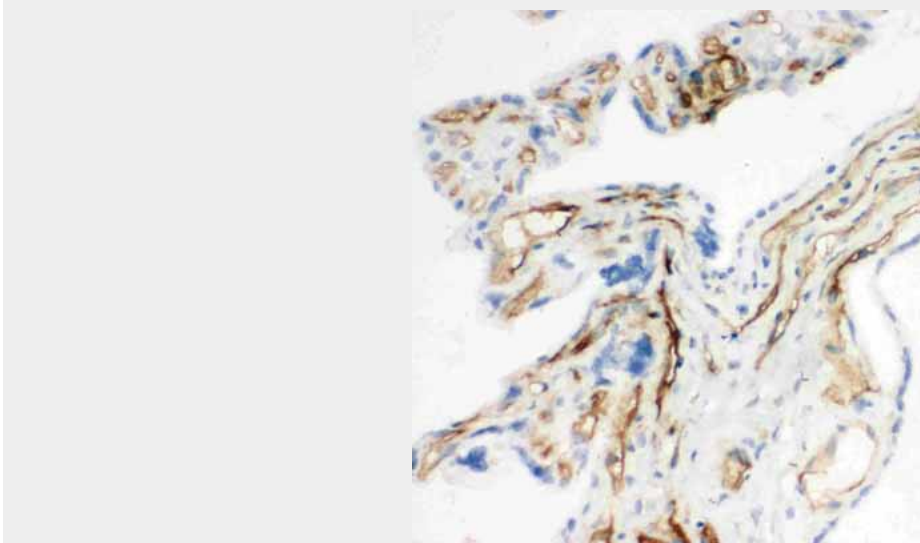
Anti-CD34 antibody, ABO10660, IHC(P) IHC(P): Rat Kidney Tissue



Anti-CD34 antibody, ABO10660, IHC(P) IHC(P): Human Lung Cancer Tissue



Anti-CD34 antibody, ABO10660, IHC(F)IHC(F): Rat Kidney Tissue



Anti-CD34 antibody, ABO10660, IHC(F)IHC(F): Rat Placenta Tissue

Anti-CD34 Antibody - Background

CD34 is a monomeric cell surface antigen with a molecular mass of approximately 110 KD. CD34 is expressed in humans in hematopoietic stem cells, vascular endothelium, and blasts from 30% of patients with acute myeloid and lymphocytic leukemia. The human CD34 gene spans 26 kb and has 8 exons, a structure quite similar to that of the murine gene. By Southern blot analysis of DNA from a panel of human x mouse somatic cell hybrids using a CD34 cDNA probe demonstrate that the gene for CD34 is located on human chromosome 1 in the 1q12----qter region. CD34 plays an important role in the formation of progenitor cells during both embryonic and adult hematopoiesis.