

Anti-FAF1 Antibody
Catalog # ABO10663**Specification**

Anti-FAF1 Antibody - Product Information

Application	WB
Primary Accession	Q9UNN5
Host	Rabbit
Reactivity	Human, Mouse, Rat
Clonality	Polyclonal
Format	Lyophilized

Description

Rabbit IgG polyclonal antibody for FAS-associated factor 1(FAF1) detection. Tested with WB in Human;Mouse;Rat.

Reconstitution

Add 0.2ml of distilled water will yield a concentration of 500ug/ml.

Anti-FAF1 Antibody - Additional Information

Gene ID 11124

Other Names

FAS-associated factor 1, hFAF1, UBX domain-containing protein 12, UBX domain-containing protein 3A, FAF1, UBXD12, UBXN3A

Calculated MW

73954 MW KDa

Application Details

Western blot, 0.1-0.5 µg/ml, Human, Rat, Mouse

Subcellular Localization

Nucleus .

Tissue Specificity

Most abundant in testis, slightly less abundant in skeletal muscle and heart, followed by prostate, thymus, ovary, small intestine, and colon. Not detected in the peripheral blood leukocytes.

Protein Name

FAS-associated factor 1(hFAF1)

Contents

Each vial contains 5mg BSA, 0.9mg NaCl, 0.2mg Na₂HPO₄, 0.05mg Thimerosal, 0.05mg NaN₃.

Immunogen

A synthetic peptide corresponding to a sequence at the N-terminus of human FAF1(1-22aa MASNMDREMILADFQACTGIEN), identical to the related mouse and rat sequences.

Purification

Immunogen affinity purified.

Cross Reactivity

No cross reactivity with other proteins

Storage

At -20°C for one year. After reconstitution, at 4°C for one month. It can also be aliquotted and stored frozen at -20°C for a longer time. Avoid repeated freezing and thawing.

Sequence Similarities

Contains 1 UBA domain.

Anti-FAF1 Antibody - Protein Information

Name FAF1

Synonyms UBXD12, UBXN3A

Function

Ubiquitin-binding protein (PubMed:19722279). Required for the progression of DNA replication forks by targeting DNA replication licensing factor CDT1 for degradation (PubMed:26842564). Potentiates but cannot initiate FAS-induced apoptosis (By similarity).

Cellular Location

Nucleus.

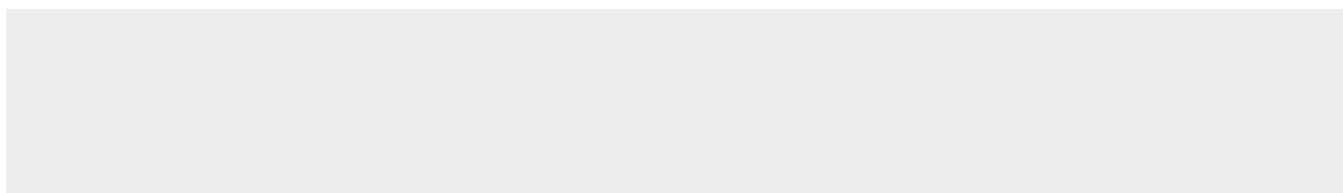
Tissue Location

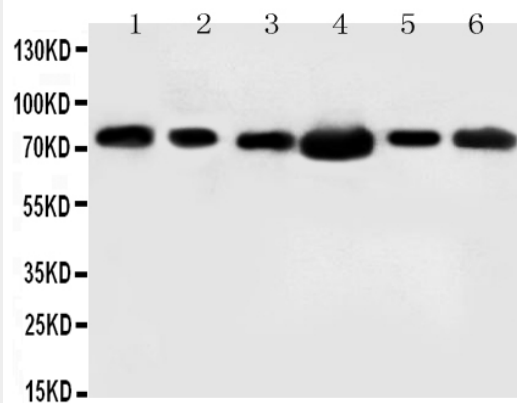
Most abundant in testis, slightly less abundant in skeletal muscle and heart, followed by prostate, thymus, ovary, small intestine, and colon. Not detected in the peripheral blood leukocytes

Anti-FAF1 Antibody - Protocols

Provided below are standard protocols that you may find useful for product applications.

- [Western Blot](#)
- [Blocking Peptides](#)
- [Dot Blot](#)
- [Immunohistochemistry](#)
- [Immunofluorescence](#)
- [Immunoprecipitation](#)
- [Flow Cytometry](#)
- [Cell Culture](#)

Anti-FAF1 Antibody - Images



Anti-FAF1 antibody, ABO10663, Western blotting
Lane 1: Rat Testis Tissue Lysate
Lane 2: MM453 Cell Lysate
Lane 3: MM231 Cell Lysate
Lane 4: HELA Cell Lysate
Lane 5: SMMC Cell Lysate
Lane 6: SW620 Cell Lysate

Anti-FAF1 Antibody - Background

Fas-associated factor-1(FAF1) is a Fas-binding pro-apoptotic protein that is a component of the death-inducing signaling complex in Fas-mediated apoptosis. FAF1 is involved in negative regulation of NF-kappaB activation. In addition to the previously known function as a component of the Fas death-inducing signaling complex, i.e. NF-kappaB activity suppressor by cytoplasmic retention of NF-kappaB p65 via physical interaction. hFAF1 was expressed abundantly in testis, skeletal muscle, and heart as 2.8 kb mRNA. Polyclonal antibody against hFAF1 detected 74 kD protein, a deduced protein size from the ORF and 40 kD protein in some cell lines.