

Anti-SFTPA1 Antibody
Catalog # ABO10671**Specification**

Anti-SFTPA1 Antibody - Product Information

Application	WB
Primary Accession	Q8IWL2
Host	Rabbit
Reactivity	Human, Rat
Clonality	Polyclonal
Format	Liquid

Description

Rabbit IgG polyclonal antibody for Pulmonary surfactant-associated protein A1(SFTPA1) detection. Tested with WB in Human;Rat.

Anti-SFTPA1 Antibody - Additional Information

Gene ID 653509

Other Names

Pulmonary surfactant-associated protein A1, PSP-A, PSPA, SP-A, SP-A1, 35 kDa pulmonary surfactant-associated protein, Alveolar proteinosis protein, Collectin-4, SFTPA1, COLEC4, PSAP, SFTP1, SFTPA, SFTPA1B

Calculated MW

26242 MW KDa

Application Details

Western blot, 0.1-0.5 µg/ml, Human, Rat

Subcellular Localization

Secreted, extracellular space, extracellular matrix. Secreted, extracellular space, surface film.

Protein Name

Pulmonary surfactant-associated protein A1(PSP-A/PSPA/SP-A/SP-A1)

Contents

Each vial contains 50% glycerol, 0.9mg NaCl, 0.2mg Na2HPO4. Carrier free (No BSA) form available in stock. If you want this antibody carrier free please specify "Carrier Free" or "No BSA" in your order note. "

Immunogen

A synthetic peptide corresponding to a sequence at the C-terminus of human SFTPA1(221-236aa KEQCVEMYTDGQWNR), different from the rat sequence by two amino acids.

Purification

Immunogen affinity purified.

Cross Reactivity

No cross reactivity with other proteins

Storage

At -20°C for one year, at 4°C for one month. Avoid repeated freezing and thawing.

Sequence Similarities

Belongs to the SFTPA family.

Anti-SFTPA1 Antibody - Protein Information

Name SFTPA1

Synonyms COLEC4, PSAP, SFTP1, SFTPA, SFTPA1B

Function

In presence of calcium ions, it binds to surfactant phospholipids and contributes to lower the surface tension at the air- liquid interface in the alveoli of the mammalian lung and is essential for normal respiration. Enhances the expression of MYO18A/SP-R210 on alveolar macrophages (By similarity).

Cellular Location

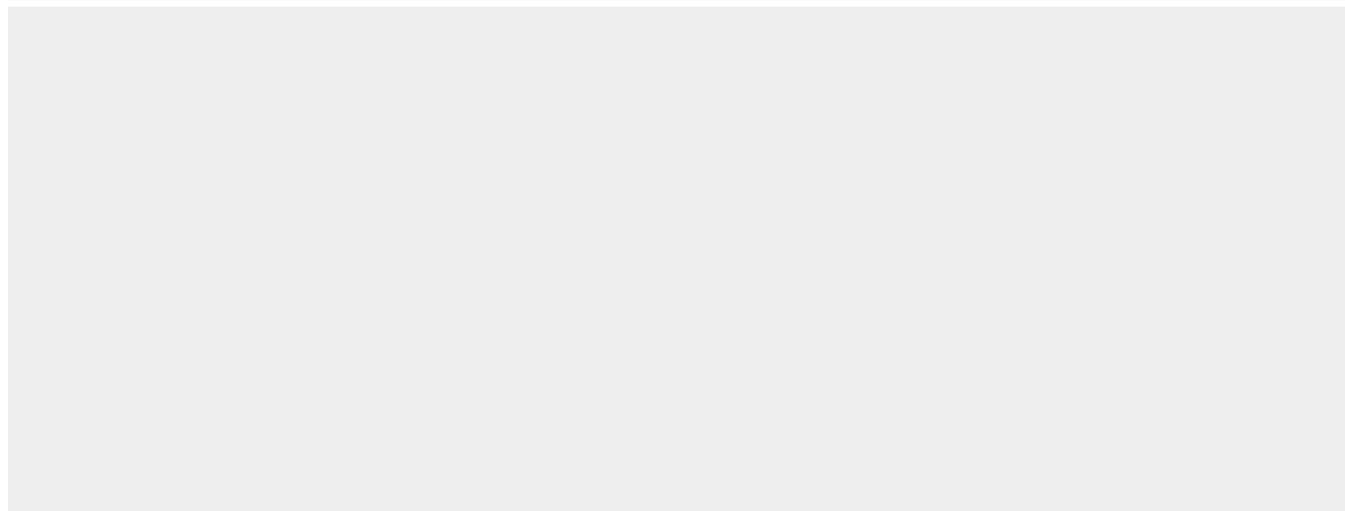
Secreted. Secreted, extracellular space, extracellular matrix. Secreted, extracellular space, surface film

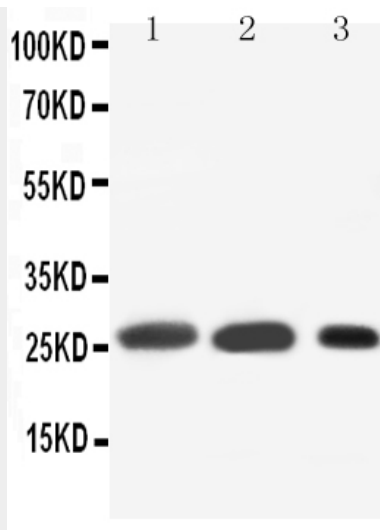
Anti-SFTPA1 Antibody - Protocols

Provided below are standard protocols that you may find useful for product applications.

- [Western Blot](#)
- [Blocking Peptides](#)
- [Dot Blot](#)
- [Immunohistochemistry](#)
- [Immunofluorescence](#)
- [Immunoprecipitation](#)
- [Flow Cytometry](#)
- [Cell Culture](#)

Anti-SFTPA1 Antibody - Images





Anti-SFTPA1 antibody, ABO10671, Western blotting
Lane 1: Rat Lung Tissue Lysate
Lane 2: Rat Lung Tissue Lysate
Lane 3: MK(55KD)

Anti-SFTPA1 Antibody - Background

Surfactant protein A is an innate immune system collectin. The gene encoding SP-A map to mouse chromosome 14.1. Surfactant protein-A, which plays a role in innate host defense in the lung, is also expressed in the Eustachian tube. We report that the frequency of specific surfactant protein-A haplotypes and genotypes differs between children with recurrent otitis media compared with a control population.