

Anti-L-Selectin Antibody
Catalog # ABO10682**Specification**

Anti-L-Selectin Antibody - Product Information

Application	WB
Primary Accession	P18337
Host	Rabbit
Reactivity	Mouse, Rat
Clonality	Polyclonal
Format	Lyophilized

Description

Rabbit IgG polyclonal antibody for L-selectin(SELL) detection. Tested with WB in Mouse;Rat.

Reconstitution

Add 0.2ml of distilled water will yield a concentration of 500ug/ml.

Anti-L-Selectin Antibody - Additional Information

Gene ID 20343

Other Names

L-selectin, CD62 antigen-like family member L, Leukocyte adhesion molecule 1, LAM-1, Leukocyte-endothelial cell adhesion molecule 1, LECAM1, Lymph node homing receptor, Lymphocyte antigen 22, Ly-22, Lymphocyte surface MEL-14 antigen, CD62L, Sell, Lnhr, Ly-22, Ly22

Calculated MW

L-selectin;CD62 antigen-like family member L;Leukocyte adhesion molecule 1;LAM-1;Leukocyte-endothelial cell adhesion molecule 1;LECAM1;Lymph node homing receptor;Lymphocyte antigen 22;Ly-22;Lymphocyte surface MEL-14 antigen;CD62L;Sell;Lnhr, Ly-22, Ly22; KDa

Application Details

Western blot, 0.1-0.5 µg/ml, Mouse, Rat

Subcellular Localization

42288 MW

Tissue Specificity

Cell surface adhesion protein. Mediates the adherence of lymphocytes to endothelial cells of high endothelial venules in peripheral lymph nodes. Promotes initial tethering and rolling of leukocytes in endothelia (By similarity). .

Source

Membrane; Single-pass type I membrane protein.

Protein Name

Predominantly expressed in lymphoid tissue. .

Contents

Each vial contains 5mg BSA, 0.9mg NaCl, 0.2mg Na₂HPO₄, 0.05mg Thimerosal, 0.05mg NaN₃.

Immunogen

A synthetic peptide corresponding to a sequence in the middle region of mouse L-selectin (125-141aa KEDCVEIYIKRERDSGK), identical to the related rat sequence.

Purification

Immunogen affinity purified.

Cross Reactivity

No cross reactivity with other proteins

Storage

At -20°C for one year. After reconstitution, at 4°C for one month. It can also be aliquotted and stored frozen at -20°C for a longer time. Avoid repeated freezing and thawing.

Sequence Similarities

L-selectin

Anti-L-Selectin Antibody - Protein Information**Name** Sell

Synonyms Lnhp, Ly-22, Ly22

Function

Calcium-dependent lectin that mediates cell adhesion by binding to glycoproteins on neighboring cells. Mediates the adherence of lymphocytes to endothelial cells of high endothelial venules in peripheral lymph nodes (PubMed: <http://www.uniprot.org/citations/1693096> target="_blank">1693096). Promotes initial tethering and rolling of leukocytes in endothelia (By similarity).

Cellular Location

Cell membrane; Single-pass type I membrane protein

Tissue Location

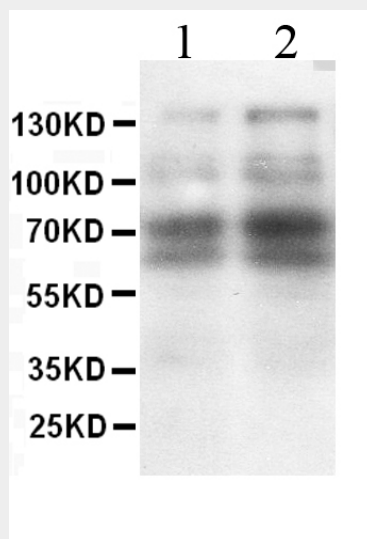
Predominantly expressed in lymphoid tissue.

Anti-L-Selectin Antibody - Protocols

Provided below are standard protocols that you may find useful for product applications.

- [Western Blot](#)
- [Blocking Peptides](#)
- [Dot Blot](#)
- [Immunohistochemistry](#)
- [Immunofluorescence](#)
- [Immunoprecipitation](#)
- [Flow Cytometry](#)
- [Cell Culture](#)

Anti-L-Selectin Antibody - Images



Anti- L-selectin antibody, ABO10682, Western blotting
All lanes: Anti L-selectin (ABO10682) at 0.5ug/ml
Lane 1: Rat Spleen Tissue Lysate at 50ug
Lane 2: Mouse Spleen Tissue Lysate at 50ug
Predicted bind size: 42KD
Observed bind size: 70KD

Anti-L-Selectin Antibody - Background

L-selectin, also known as CD62L, is a cell adhesion molecule found on leukocytes. It belongs to the selectin family of proteins, which recognize sialylated carbohydrate groups. It is cleaved by ADAM17. SELL(L-selectin) is a cell surface component that is a member of a family of adhesion/homing receptors which play important roles in leukocyte-endothelial cell interactions. The molecule is composed of multiple domains: one homologous to lectins, one to epidermal growth factor, and two to the consensus repeat units found in C3/C4 binding proteins. L-selectin acts as a homing receptor" for leukocytes to enter secondary lymphoid tissues via high endothelial venules. Ligands present on endothelial cells will bind to leukocyte expressing L-selectin