

Anti-TGF Alpha Antibody
Catalog # ABO10683**Specification**

Anti-TGF Alpha Antibody - Product Information

Application	WB
Primary Accession	P01135
Host	Rabbit
Reactivity	Human
Clonality	Polyclonal
Format	Lyophilized

Description

Rabbit IgG polyclonal antibody for Protransforming growth factor alpha(TGFA) detection. Tested with WB in Human.

Reconstitution

Add 0.2ml of distilled water will yield a concentration of 500ug/ml.

Anti-TGF Alpha Antibody - Additional Information

Gene ID 7039

Other Names

Protransforming growth factor alpha, Transforming growth factor alpha, TGF-alpha, EGF-like TGF, ETGF, TGF type 1, TGFA

Calculated MW

17006 MW KDa

Application Details

Western blot, 0.1-0.5 µg/ml, Human, Mouse, Rat

Subcellular Localization

Transforming growth factor alpha: Secreted, extracellular space.

Tissue Specificity

Isoform 1, isoform 3 and isoform 4 are expressed in keratinocytes and tumor-derived cell lines. .

Protein Name

Protransforming growth factor alpha

Contents

Each vial contains 5mg BSA, 0.9mg NaCl, 0.2mg Na₂HPO₄, 0.05mg Thimerosal, 0.05mg NaN₃.

Immunogen

A synthetic peptide corresponding to a sequence at the C-terminus of human TGF alpha(73-89aa CHSGYVGARCEHADLLA), different from the related mouse and rat sequences by one amino acid.

Purification

Immunogen affinity purified.

Cross Reactivity

No cross reactivity with other proteins

Storage

At -20°C for one year. After reconstitution, at 4°C for one month. It can also be aliquotted and stored frozen at -20°C for a longer time. Avoid repeated freezing and thawing.

Anti-TGF Alpha Antibody - Protein Information

Name TGFA

Function

TGF alpha is a mitogenic polypeptide that is able to bind to the EGF receptor/EGFR and to act synergistically with TGF beta to promote anchorage-independent cell proliferation in soft agar.

Cellular Location

[Transforming growth factor alpha]: Secreted, extracellular space

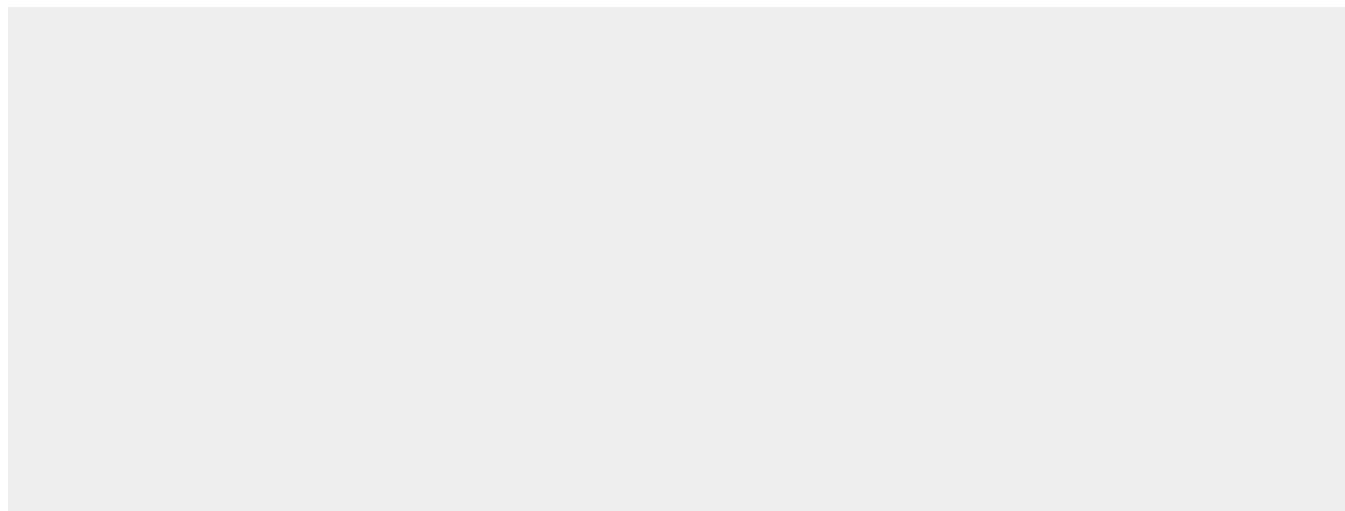
Tissue Location

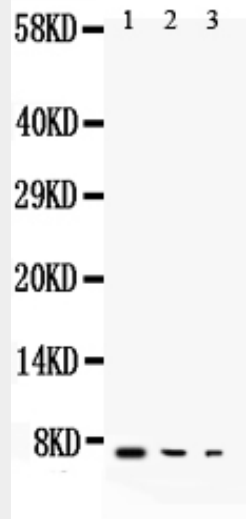
Isoform 1, isoform 3 and isoform 4 are expressed in keratinocytes and tumor-derived cell lines

Anti-TGF Alpha Antibody - Protocols

Provided below are standard protocols that you may find useful for product applications.

- [Western Blot](#)
- [Blocking Peptides](#)
- [Dot Blot](#)
- [Immunohistochemistry](#)
- [Immunofluorescence](#)
- [Immunoprecipitation](#)
- [Flow Cytometry](#)
- [Cell Culture](#)

Anti-TGF Alpha Antibody - Images



Anti-TGF alpha antibody, ABO10683, Western blotting All lanes: Anti TGF alpha (ABO10683) at 0.5ug/ml Lane 1: Recombinant Human TGF a Protein 10ng Lane 2: Recombinant Human TGF a Protein 5ng Lane 3: Recombinant Human TGF a Protein 2.5ng Predicted bind size: 6KD Observed bind size: 6KD

Anti-TGF Alpha Antibody - Background

Transforming growth factor alpha (TGF-alpha) is upregulated in some human cancers. It is produced in macrophages, brain cells, and keratinocytes, and induces epithelial development. It is closely related to EGF, and can also bind to the EGF receptor with similar effects. TGFalpha stimulates neural cell proliferation in the adult injured brain. TGFalpha was cited in the 2001 NIH Stem Cell report to the U.S. Congress as promising evidence for the ability of adult stem cells to restore function in neurodegenerative disorders.