

**Anti-P-Cadherin Antibody**  
**Catalog # ABO10687****Specification**

---

**Anti-P-Cadherin Antibody - Product Information**

Application	WB, IHC-P, ICC
Primary Accession	<a href="#">P22223</a>
Host	Rabbit
Reactivity	Human
Clonality	Polyclonal
Format	Lyophilized

**Description**

Rabbit IgG polyclonal antibody for Cadherin-3(CDH3) detection. Tested with WB, IHC-P, ICC in Human.

**Reconstitution**

Add 0.2ml of distilled water will yield a concentration of 500ug/ml.

**Anti-P-Cadherin Antibody - Additional Information**

**Gene ID** 1001

**Other Names**

Cadherin-3, Placental cadherin, P-cadherin, CDH3, CDHP

**Calculated MW**

91418 MW KDa

**Application Details**

Immunocytochemistry , 0.5-1 µg/ml, Human, -<br>Immunohistochemistry(Paraffin-embedded Section), 0.5-1 µg/ml, Human, By Heat<br>Western blot, 0.1-0.5 µg/ml, Human<br>

**Subcellular Localization**

Cell membrane; Single-pass type I membrane protein.

**Tissue Specificity**

Expressed in some normal epithelial tissues and in some carcinoma cell lines. .

**Protein Name**

Cadherin-3

**Contents**

Each vial contains 5mg BSA, 0.9mg NaCl, 0.2mg Na<sub>2</sub>HPO<sub>4</sub>, 0.05mg Thimerosal, 0.05mg NaN<sub>3</sub>.

**Immunogen**

A synthetic peptide corresponding to a sequence in the middle region of human P cadherin(612-626aa QDTYDVHLSLSDHGN), different from the mouse and rat sequences by one amino acid.

**Purification**

Immunogen affinity purified.

**Cross Reactivity**

No cross reactivity with other proteins

**Storage**

**At -20°C for one year. After reconstitution, at 4°C for one month. It can also be aliquotted and stored frozen at -20°C for a longer time. Avoid repeated freezing and thawing.**

**Sequence Similarities**

Contains 5 cadherin domains.

**Anti-P-Cadherin Antibody - Protein Information**

**Name** CDH3

**Synonyms** CDHP

**Function**

Cadherins are calcium-dependent cell adhesion proteins. They preferentially interact with themselves in a homophilic manner in connecting cells; cadherins may thus contribute to the sorting of heterogeneous cell types.

**Cellular Location**

Cell membrane; Single-pass type I membrane protein

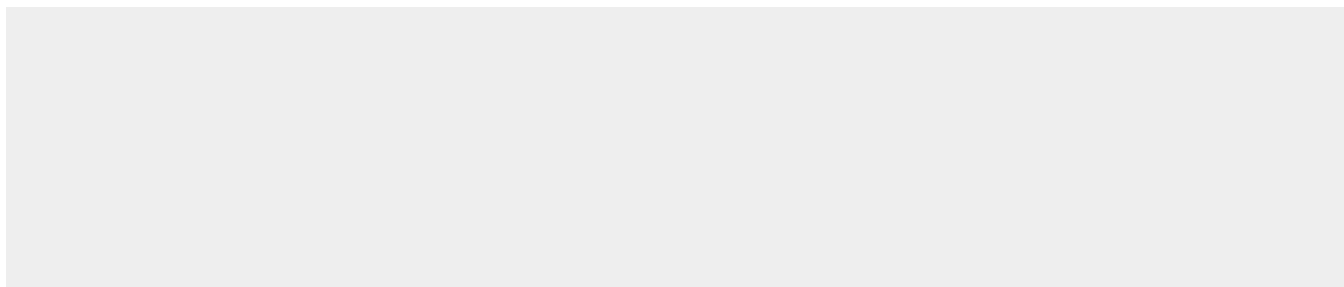
**Tissue Location**

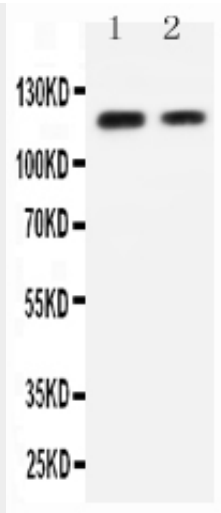
Expressed in some normal epithelial tissues and in some carcinoma cell lines.

**Anti-P-Cadherin Antibody - Protocols**

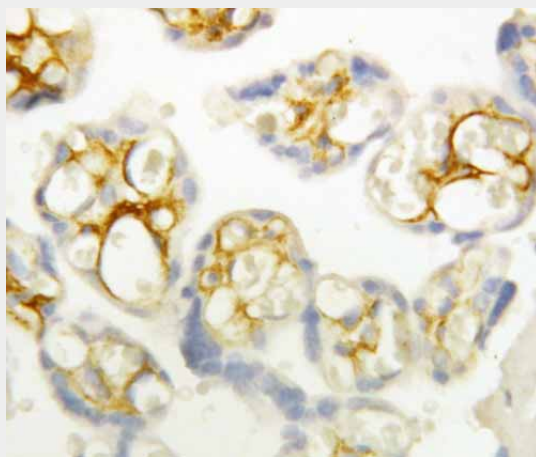
Provided below are standard protocols that you may find useful for product applications.

- [Western Blot](#)
- [Blocking Peptides](#)
- [Dot Blot](#)
- [Immunohistochemistry](#)
- [Immunofluorescence](#)
- [Immunoprecipitation](#)
- [Flow Cytometry](#)
- [Cell Culture](#)

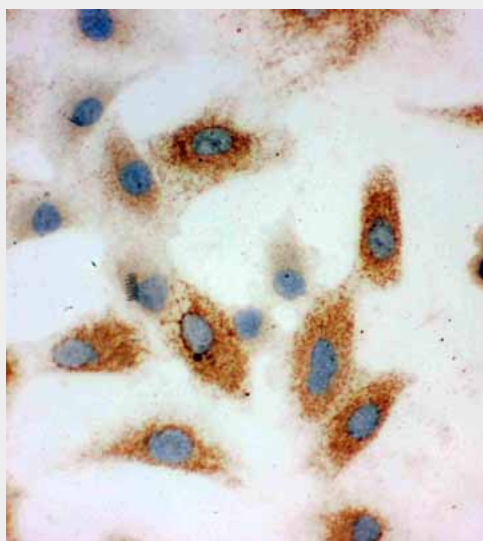
**Anti-P-Cadherin Antibody - Images**



Anti-P cadherin antibody, ABO10687, Western blotting  
Lane 1: Recombinant Human P-Cadherin Protein 10ng  
Lane 2: Recombinant Human P-Cadherin Protein 5ng



Anti-P cadherin antibody, ABO10687, IHC(P)  
IHC(P): Human Placenta Tissue



Anti-P cadherin antibody, ABO10687, ICC  
IC: A549 Cell

#### **Anti-P-Cadherin Antibody - Background**

Cadherins, such as CDH3, are integral membrane glycoproteins responsible for calcium-dependent cell-cell adhesion. Cadherin-3 is a protein that in humans is encoded by the CDH3 gene. This gene is a classical cadherin from the cadherin superfamily. The encoded protein is a calcium-dependent cell-cell adhesion glycoprotein composed of five extracellular cadherin repeats, a transmembrane region and a highly conserved cytoplasmic tail. This gene is located in a six-cadherin cluster in a region on the long arm of chromosome 16 that is involved in loss of heterozygosity events in breast and prostate cancer. In addition, aberrant expression of this protein is observed in cervical adenocarcinomas. Mutations in this gene have been associated with congenital hypotrichosis with juvenile macular dystrophy.