

Anti-Connexin 32/GJB1 Antibody
Catalog # ABO10692**Specification**

Anti-Connexin 32/GJB1 Antibody - Product Information

Application	WB, IHC-P
Primary Accession	P08034
Host	Rabbit
Reactivity	Human, Mouse, Rat
Clonality	Polyclonal
Format	Lyophilized

Description

Rabbit IgG polyclonal antibody for Gap junction beta-1 protein(GJB1) detection. Tested with WB, IHC-P in Human;Mouse;Rat.

Reconstitution

Add 0.2ml of distilled water will yield a concentration of 500ug/ml.

Anti-Connexin 32/GJB1 Antibody - Additional Information

Gene ID 2705

Other Names

Gap junction beta-1 protein, Connexin-32, Cx32, GAP junction 28 kDa liver protein, GJB1, CX32

Calculated MW

32025 MW KDa

Application Details

Immunohistochemistry(Paraffin-embedded Section), 0.5-1 µg/ml, Human, Mouse, Rat, By Heat
Western blot, 0.1-0.5 µg/ml, Human, Rat, Mouse

Subcellular Localization

Cell membrane; Multi-pass membrane protein. Cell junction, gap junction.

Protein Name

Gap junction beta-1 protein

Contents

Each vial contains 5mg BSA, 0.9mg NaCl, 0.2mg Na₂HPO₄, 0.05mg Thimerosal, 0.05mg NaN₃.

Immunogen

A synthetic peptide corresponding to a sequence in the middle region of human Connexin 32/GJB1(215-231aa RACARRAQRRSNPPSRK), identical to the related mouse and rat sequences.

Purification

Immunogen affinity purified.

Cross Reactivity

No cross reactivity with other proteins

Storage

At -20°C for one year. After reconstitution, at 4°C for one month. It can also be aliquotted and stored frozen at -20°C for a longer time. Avoid repeated freezing and thawing.

Sequence Similarities

Belongs to the connexin family. Beta-type (group I) subfamily.

Anti-Connexin 32/GJB1 Antibody - Protein Information

Name GJB1

Synonyms CX32

Function

One gap junction consists of a cluster of closely packed pairs of transmembrane channels, the connexons, through which materials of low MW diffuse from one cell to a neighboring cell.

Cellular Location

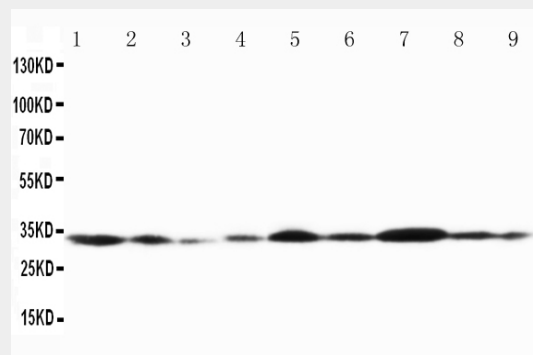
Cell membrane; Multi-pass membrane protein. Cell junction, gap junction

Anti-Connexin 32/GJB1 Antibody - Protocols

Provided below are standard protocols that you may find useful for product applications.

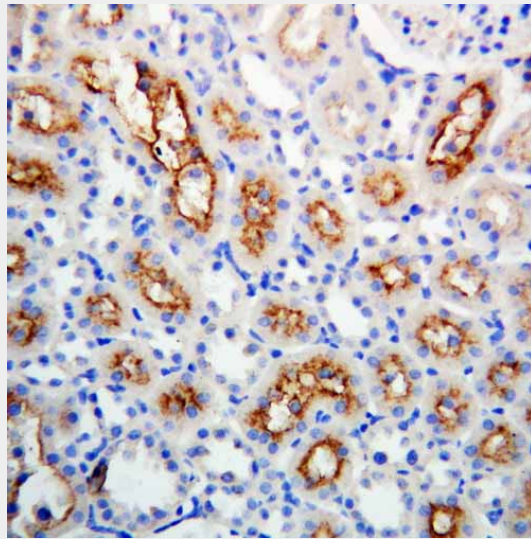
- [Western Blot](#)
- [Blocking Peptides](#)
- [Dot Blot](#)
- [Immunohistochemistry](#)
- [Immunofluorescence](#)
- [Immunoprecipitation](#)
- [Flow Cytometry](#)
- [Cell Culture](#)

Anti-Connexin 32/GJB1 Antibody - Images



Anti-Connexin 32/GJB1 antibody, ABO10692, Western blotting Lane 1: Rat Cardiac Muscle Tissue Lysate Lane 2: Rat Cardiac Muscle Tissue Lysate Lane 3: Rat Skeletal Muscle Tissue Lysate Lane 4:

Rat Brain Tissue Lysate Lane 5: MCF-7 Cell Lysate Lane 6: HELA Cell Lysate Lane 7: SMMC Cell Lysate Lane 8: JURKAT Cell Lysate Lane 9: COLO320 Cell Lysate



Anti-Connexin 32/GJB1 antibody, ABO10692, IHC(P)IHC(P):Rat Kidney Tissue

Anti-Connexin 32/GJB1 Antibody - Background

Connexins are membrane-spanning proteins that assemble to form gap junction channels that facilitate the transfer of ions and small molecules between cells (Bergoffen et al., 1993). For a general discussion of connexin proteins, also known as Gap junction beta-1 protein. Gap junction beta-1 protein is a protein that in humans is encoded by the GJB1 gene. In melanocytic cells GJB1 gene expression may be regulated by MITF.