

Anti-CCL4/MIP-1 beta Antibody
Catalog # ABO10705**Specification**

Anti-CCL4/MIP-1 beta Antibody - Product Information

Application	WB
Primary Accession	P14097
Host	Rabbit
Reactivity	Mouse
Clonality	Polyclonal
Format	Lyophilized

Description

Rabbit IgG polyclonal antibody for C-C motif chemokine 4(CCL4) detection. Tested with WB in Mouse.

Reconstitution

Add 0.2ml of distilled water will yield a concentration of 500ug/ml.

Anti-CCL4/MIP-1 beta Antibody - Additional Information

Gene ID 20303

Other Names

C-C motif chemokine 4, Immune activation protein 2, ACT-2, ACT2, Macrophage inflammatory protein 1-beta, MIP-1-beta, Protein H400, SIS-gamma, Small-inducible cytokine A4, Ccl4, Mip1b, Scya4

Calculated MW

10168 MW KDa

Application Details

Western blot, 0.1-0.5 µg/ml, Mouse

Subcellular Localization

Secreted.

Protein Name

C-C motif chemokine 4

Contents

Each vial contains 5mg BSA, 0.9mg NaCl, 0.2mg Na₂HPO₄, 0.05mg Thimerosal, 0.05mg NaN₃.

Immunogen

A synthetic peptide corresponding to a sequence at the C-terminus of mouse CCL4 (74-88aa CANPSEPWVTEYMSD).

Purification

Immunogen affinity purified.

Cross Reactivity

No cross reactivity with other proteins

Storage

At -20°C for one year. After reconstitution, at 4°C for one month. It can also be aliquotted and stored frozen at -20°C for a longer time. Avoid repeated freezing and thawing.

Anti-CCL4/MIP-1 beta Antibody - Protein Information

Name Ccl4

Synonyms Mip1b, Scya4

Function

Monokine with inflammatory and chemokinetic properties.

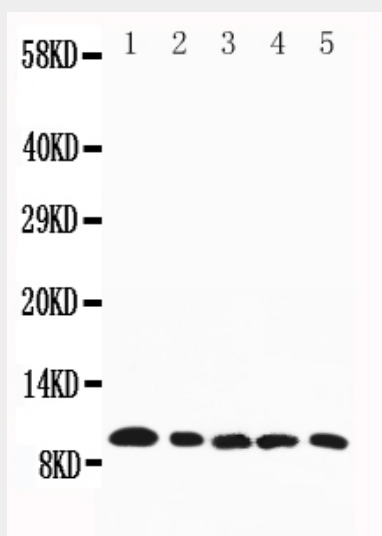
Cellular Location

Secreted.

Anti-CCL4/MIP-1 beta Antibody - Protocols

Provided below are standard protocols that you may find useful for product applications.

- [Western Blot](#)
- [Blocking Peptides](#)
- [Dot Blot](#)
- [Immunohistochemistry](#)
- [Immunofluorescence](#)
- [Immunoprecipitation](#)
- [Flow Cytometry](#)
- [Cell Culture](#)

Anti-CCL4/MIP-1 beta Antibody - Images

All lanes: Anti-CCL4, ABO10705
Lane 1: Mouse Spleen Tissue Lysate
Lane 2: Mouse Cardiac Muscle Tissue Lysate
Lane 3: Mouse Lung Tissue Lysate
Lane 4: Mouse Kidney Tissue Lysate
Lane 5: Mouse Skeletal Muscle Tissue Lysate

Anti-CCL4/MIP-1 beta Antibody - Background

Chemokine(C-C motif) ligand 4, also known as CCL4, is a protein which in humans is encoded by the CCL4 gene. It is a CC chemokine with specificity for CCR5 receptors. It is a chemoattractant for natural killer cells, monocytes and a variety of other immune cells. CCL4 is a major HIV-suppressive factor produced by CD8+ T cells. Performing-low memory CD8+ T cells that normally synthesize MIP-1-beta. Modi et al.(1991) assigned the SCYA4 gene to a slightly more distal location than had Irving et al.(1990): 17q21-q23 rather than 17q11-q21.