

**Anti-MMP10 Antibody**  
**Catalog # ABO10706****Specification**

---

**Anti-MMP10 Antibody - Product Information**

Application	<b>WB</b>
Primary Accession	<a href="#">P09238</a>
Host	<b>Rabbit</b>
Reactivity	<b>Human</b>
Clonality	<b>Polyclonal</b>
Format	<b>Lyophilized</b>

**Description**

Rabbit IgG polyclonal antibody for Stromelysin-2(MMP10) detection. Tested with WB in Human.

**Reconstitution**

Add 0.2ml of distilled water will yield a concentration of 500ug/ml.

**Anti-MMP10 Antibody - Additional Information**

**Gene ID** 4319

**Other Names**

Stromelysin-2, SL-2, 3.4.24.22, Matrix metalloproteinase-10, MMP-10, Transin-2, MMP10, STMY2

**Calculated MW**

54151 MW KDa

**Application Details**

Western blot, 0.1-0.5 µg/ml, Human<br>

**Subcellular Localization**

Secreted, extracellular space, extracellular matrix .

**Protein Name**

Stromelysin-2(SL-2)

**Contents**

Each vial contains 5mg BSA, 0.9mg NaCl, 0.2mg Na<sub>2</sub>HPO<sub>4</sub>, 0.05mg Thimerosal, 0.05mg NaN<sub>3</sub>.

**Immunogen**

A synthetic peptide corresponding to a sequence at the C-terminus of human MMP10(410-422aa FDENSQSMEQGFP).

**Purification**

Immunogen affinity purified.

**Cross Reactivity**

No cross reactivity with other proteins

**Storage**

At -20°C for one year. After reconstitution, at 4°C for one month. It can also be aliquotted and stored frozen at -20°C for a longer time. Avoid repeated freezing and thawing.

**Sequence Similarities**

Belongs to the peptidase M10A family.

**Anti-MMP10 Antibody - Protein Information**

**Name** MMP10

**Synonyms** STMY2

**Function**

Can degrade fibronectin, gelatins of type I, III, IV, and V; weakly collagens III, IV, and V. Activates procollagenase.

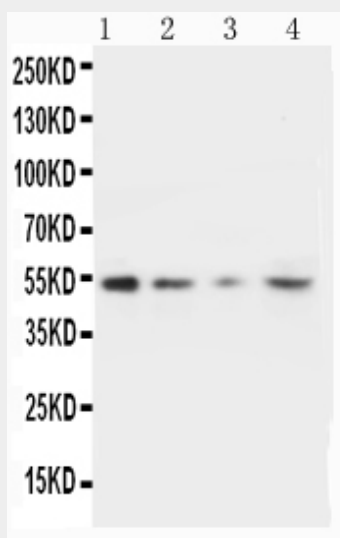
**Cellular Location**

Secreted, extracellular space, extracellular matrix

**Anti-MMP10 Antibody - Protocols**

Provided below are standard protocols that you may find useful for product applications.

- [Western Blot](#)
- [Blocking Peptides](#)
- [Dot Blot](#)
- [Immunohistochemistry](#)
- [Immunofluorescence](#)
- [Immunoprecipitation](#)
- [Flow Cytometry](#)
- [Cell Culture](#)

**Anti-MMP10 Antibody - Images**

Anti-MMP10 antibody, ABO10706, Western blotting  
Lane 1: Recombinant Human MMP-10 Protein 10ng  
Lane 2: Recombinant Human MMP-10 Protein 5ng  
Lane 3: Recombinant Human MMP-10 Protein 2.5ng  
Lane 4: HELA Cell Lysate

#### **Anti-MMP10 Antibody - Background**

Stromelysin-2 also known as matrix metalloproteinase-10(MMP-10) or transin-2 is an enzyme that in humans is encoded by the MMP10 gene. Proteins of the matrix metalloproteinase(MMP) family are involved in the breakdown of extracellular matrix in normal physiological processes, such as embryonic development, reproduction, and tissue remodeling, as well as in disease processes, such as arthritis and metastasis. Most MMP's are secreted as inactive proproteins which are activated when cleaved by extracellular proteinases. The enzyme encoded by this gene degrades proteoglycans and fibronectin. The gene is part of a cluster of MMP genes which localize to chromosome 11q22.3.