

Anti-Fractalkine/CX3CL1 Antibody
Catalog # ABO10723**Specification**

Anti-Fractalkine/CX3CL1 Antibody - Product Information

Application	WB
Primary Accession	P78423
Host	Rabbit
Reactivity	Human
Clonality	Polyclonal
Format	Lyophilized

Description

Rabbit IgG polyclonal antibody for Fractalkine(CX3CL1) detection. Tested with WB in Human.

Reconstitution

Add 0.2ml of distilled water will yield a concentration of 500ug/ml.

Anti-Fractalkine/CX3CL1 Antibody - Additional Information

Gene ID 6376

Other Names

Fractalkine, C-X3-C motif chemokine 1, CX3C membrane-anchored chemokine, Neurotactin, Small-inducible cytokine D1, Processed fractalkine, CX3CL1, FKN, NTT, SCYD1

Calculated MW

42203 MW KDa

Application Details

Western blot, 0.1-0.5 µg/ml, Human

Subcellular Localization

Cell membrane; Single-pass type I membrane protein.

Tissue Specificity

Small intestine, colon, testis, prostate, heart, brain, lung, skeletal muscle, kidney and pancreas.

Protein Name

Fractalkine

Contents

Each vial contains 5mg BSA, 0.9mg NaCl, 0.2mg Na₂HPO₄, 0.05mg Thimerosal, 0.05mg NaN₃.

Immunogen

A synthetic peptide corresponding to a sequence at the N-terminus of human CX3CL1(50-64aa HYQQNQASCGKRAII).

Purification

Immunogen affinity purified.

Cross Reactivity

No cross reactivity with other proteins

Storage

At -20°C for one year. After reconstitution, at 4°C for one month. It can also be aliquotted and stored frozen at -20°C for a longer time. Avoid repeated freezing and thawing.

Sequence Similarities

Belongs to the intercrine delta family.

Anti-Fractalkine/CX3CL1 Antibody - Protein Information

Name CX3CL1 {ECO:0000303|PubMed:9024663}

Function

Chemokine that acts as a ligand for both CX3CR1 and integrins ITGA5:ITGB3 and ITGA4:ITGB1 (PubMed: [12055230](http://www.uniprot.org/citations/12055230), PubMed: [21829356](http://www.uniprot.org/citations/21829356), PubMed: [23125415](http://www.uniprot.org/citations/23125415), PubMed: [9782118](http://www.uniprot.org/citations/9782118), PubMed: [9931005](http://www.uniprot.org/citations/9931005)). The CX3CR1-CX3CL1 signaling exerts distinct functions in different tissue compartments, such as immune response, inflammation, cell adhesion and chemotaxis (PubMed: [12055230](http://www.uniprot.org/citations/12055230), PubMed: [9024663](http://www.uniprot.org/citations/9024663), PubMed: [9177350](http://www.uniprot.org/citations/9177350), PubMed: [9782118](http://www.uniprot.org/citations/9782118)). Regulates leukocyte adhesion and migration processes at the endothelium (PubMed: [9024663](http://www.uniprot.org/citations/9024663), PubMed: [9177350](http://www.uniprot.org/citations/9177350)). Can activate integrins in both a CX3CR1-dependent and CX3CR1-independent manner (PubMed: [23125415](http://www.uniprot.org/citations/23125415), PubMed: [24789099](http://www.uniprot.org/citations/24789099)). In the presence of CX3CR1, activates integrins by binding to the classical ligand-binding site (site 1) in integrins (PubMed: [23125415](http://www.uniprot.org/citations/23125415), PubMed: [24789099](http://www.uniprot.org/citations/24789099)). In the absence of CX3CR1, binds to a second site (site 2) in integrins which is distinct from site 1 and enhances the binding of other integrin ligands to site 1 (PubMed: [23125415](http://www.uniprot.org/citations/23125415), PubMed: [24789099](http://www.uniprot.org/citations/24789099)).

Cellular Location

Cell membrane; Single-pass type I membrane protein

Tissue Location

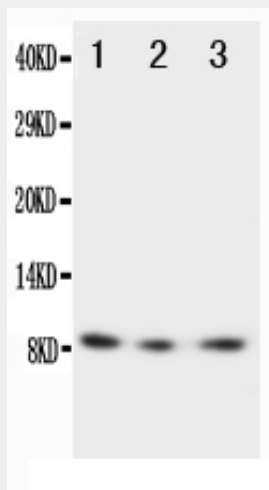
Expressed in the seminal plasma, endometrial fluid and follicular fluid (at protein level). Small intestine, colon, testis, prostate, heart, brain, lung, skeletal muscle, kidney and pancreas. Most abundant in the brain and heart

Anti-Fractalkine/CX3CL1 Antibody - Protocols

Provided below are standard protocols that you may find useful for product applications.

- [Western Blot](#)
- [Blocking Peptides](#)
- [Dot Blot](#)
- [Immunohistochemistry](#)
- [Immunofluorescence](#)
- [Immunoprecipitation](#)
- [Flow Cytometry](#)
- [Cell Culture](#)

Anti-Fractalkine/CX3CL1 Antibody - Images



Anti-CX3CL1 antibody, ABO10723, Western blotting
Lane 1: Recombinant Human Fractalkine Protein 10ng
Lane 2: Recombinant Human Fractalkine Protein 5ng
Lane 3: Recombinant Human Fractalkine Protein 2.5ng

Anti-Fractalkine/CX3CL1 Antibody - Background

Chemokine(C-X3-C motif) ligand 1, also known as CX3CL1, is a large cytokine protein. It is said to be the only known member of the CX3C chemokine family. It is also commonly known under the names fractalkine(in humans) and neurotactin(in mice). Its gene is mapped to the long arm of chromosome 8. Being the large protein, it has got 373 amino acids. Imai et al.(1997) identified a 7-transmembrane high-affinity receptor(CX3CR1; 601470) for fractalkine and showed that it mediates both the adhesive and migratory functions of fractalkine.