

Anti-GADD45A Antibody
Catalog # ABO10725**Specification**

Anti-GADD45A Antibody - Product Information

Application	WB
Primary Accession	P24522
Host	Rabbit
Reactivity	Human, Mouse, Rat
Clonality	Polyclonal
Format	Lyophilized

Description

Rabbit IgG polyclonal antibody for Growth arrest and DNA damage-inducible protein GADD45 alpha(GADD45A) detection. Tested with WB in Human;Mouse;Rat.

Reconstitution

Add 0.2ml of distilled water will yield a concentration of 500ug/ml.

Anti-GADD45A Antibody - Additional Information

Gene ID 1647

Other Names

Growth arrest and DNA damage-inducible protein GADD45 alpha, DNA damage-inducible transcript 1 protein, DDIT-1, GADD45A, DDIT1, GADD45

Calculated MW

18336 MW KDa

Application Details

Western blot, 0.1-0.5 µg/ml, Human, Rat, Mouse

Subcellular Localization

Nucleus .

Protein Name

Growth arrest and DNA damage-inducible protein GADD45 alpha

Contents

Each vial contains 5mg BSA, 0.9mg NaCl, 0.2mg Na₂HPO₄, 0.05mg Thimerosal, 0.05mg NaN₃.

Immunogen

A synthetic peptide corresponding to a sequence at the C-terminus of human GADD45A(129-143aa NPHSSQWKDPALSQL), identical to the related mouse and rat sequences.

Purification

Immunogen affinity purified.

Cross Reactivity

No cross reactivity with other proteins

Storage

At -20°C for one year. After reconstitution, at 4°C for one month. It can also be aliquotted and stored frozen at -20°C for a longer time. Avoid repeated freezing and thawing.

Sequence Similarities

Belongs to the GADD45 family.

Anti-GADD45A Antibody - Protein Information

Name GADD45A

Synonyms DDIT1, GADD45

Function

In T-cells, functions as a regulator of p38 MAPKs by inhibiting p88 phosphorylation and activity (By similarity). Might affect PCNA interaction with some CDK (cell division protein kinase) complexes; stimulates DNA excision repair in vitro and inhibits entry of cells into S phase.

Cellular Location

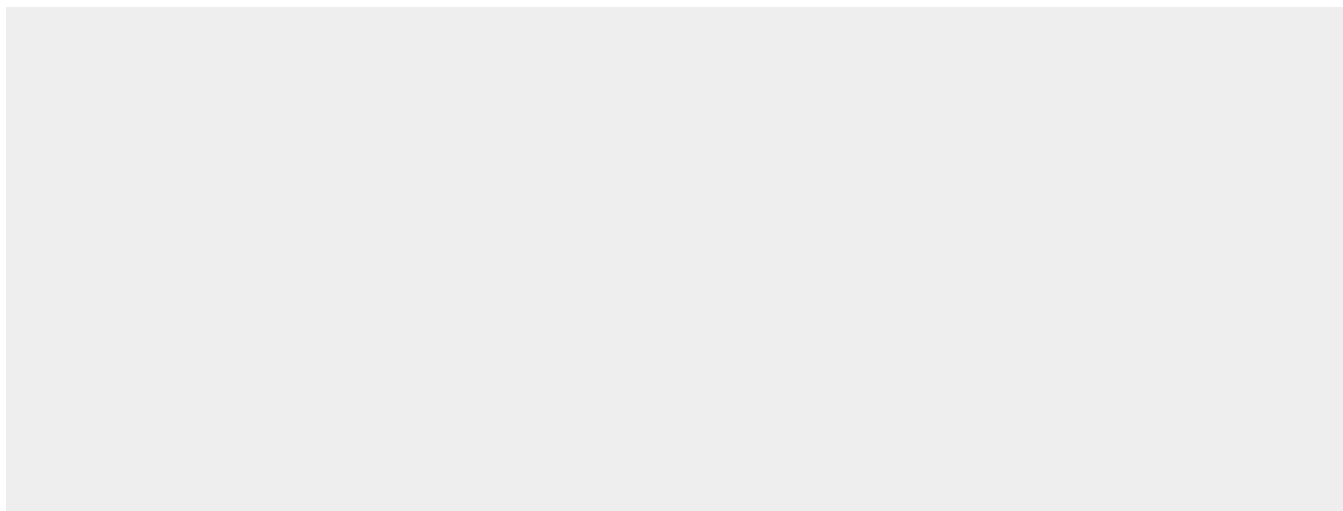
Nucleus.

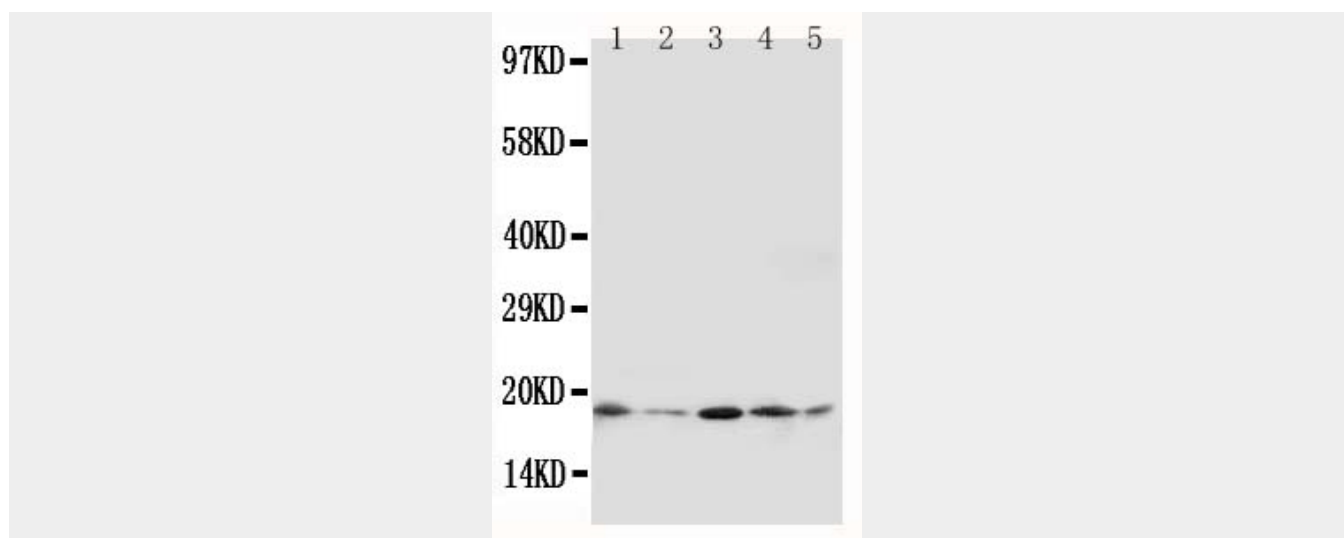
Anti-GADD45A Antibody - Protocols

Provided below are standard protocols that you may find useful for product applications.

- [Western Blot](#)
- [Blocking Peptides](#)
- [Dot Blot](#)
- [Immunohistochemistry](#)
- [Immunofluorescence](#)
- [Immunoprecipitation](#)
- [Flow Cytometry](#)
- [Cell Culture](#)

Anti-GADD45A Antibody - Images





Anti-GADD45A antibody, ABO10725, Western blotting
Lane 1: MM453 Cell Lysate
Lane 2: MM231 Cell Lysate
Lane 3: HELA Cell Lysate
Lane 4: RAJI Cell Lysate
Lane 5: SW620 Cell Lysate

Anti-GADD45A Antibody - Background

Growth arrest and DNA-damage-inducible protein GADD45 alpha(GADD45A) is a protein that in humans is encoded by the GADD45A gene. This gene is a member of a group of genes whose transcript levels are increased following stressful growth arrest conditions and treatment with DNA-damaging agents. Papathanasiou et al.(1991) demonstrated that the GADD45 gene is located on 1p34-p12. Sequence analysis of human and hamster cDNA clones demonstrated that the gene has been highly conserved and encodes a novel 165-amino acid polypeptide. Northern blot analysis detected moderate expression of a 1.4-kb GADD45A transcript in heart, skeletal muscle, and kidney, with little or no expression in brain, placenta, lung, liver, and pancreas. Gadd45a promotes epigenetic gene activation by repair-mediated DNA demethylation.