

Anti-MAPK8/9 Antibody
Catalog # ABO10730**Specification**

Anti-MAPK8/9 Antibody - Product Information

Application	WB, IHC-P, ICC
Primary Accession	P45983
Host	Rabbit
Reactivity	Human, Mouse, Rat
Clonality	Polyclonal
Format	Lyophilized

Description

Rabbit IgG polyclonal antibody for Mitogen-activated protein kinase 8(MAPK8) detection. Tested with WB, IHC-P, ICC in Human;Mouse;Rat.

Reconstitution

Add 0.2ml of distilled water will yield a concentration of 500ug/ml.

Anti-MAPK8/9 Antibody - Additional Information

Gene ID 5599

Other Names

Mitogen-activated protein kinase 8, MAP kinase 8, MAPK 8, 2.7.11.24, JNK-46, Stress-activated protein kinase 1c, SAPK1c, Stress-activated protein kinase JNK1, c-Jun N-terminal kinase 1, MAPK8, JNK1, PRKM8, SAPK1, SAPK1C

Calculated MW

48296 MW KDa

Application Details

Immunohistochemistry(Paraffin-embedded Section), 0.5-1 µg/ml, Human, Rat, Mouse, By Heat
Immunocytochemistry , 0.5-1 µg/ml, Human, -Western blot, 0.1-0.5 µg/ml, Human, Mouse, Rat

Subcellular Localization

Cytoplasm . Nucleus .

Protein Name

Mitogen-activated protein kinase 8(MAP kinase 8/MAPK 8)

Contents

Each vial contains 5mg BSA, 0.9mg NaCl, 0.2mg Na₂HPO₄, 0.05mg Thimerosal, 0.05mg NaN₃.

Immunogen

A synthetic peptide corresponding to a sequence in the middle region of human MAPK8/9(344-363aa EREHTIEEWKELIYKEVMDL), identical to the related mouse and rat sequences.

Purification

Immunogen affinity purified.

Cross Reactivity

No cross reactivity with other proteins

Storage

At -20°C for one year. After r^oConstitution, at 4°C for one month. It^oCan also be aliquotted and stored frozen at -20°C for a longer time.Avoid repeated freezing and thawing.

Sequence Similarities

Belongs to the protein kinase superfamily. CMGC Ser/Thr protein kinase family. MAP kinase subfamily.

Anti-MAPK8/9 Antibody - Protein Information

Name MAPK8

Function

Serine/threonine-protein kinase involved in various processes such as cell proliferation, differentiation, migration, transformation and programmed cell death. Extracellular stimuli such as pro- inflammatory cytokines or physical stress stimulate the stress- activated protein kinase/c-Jun N-terminal kinase (SAP/JNK) signaling pathway (PubMed:28943315). In this cascade, two dual specificity kinases MAP2K4/MKK4 and MAP2K7/MKK7 phosphorylate and activate MAPK8/JNK1. In turn, MAPK8/JNK1 phosphorylates a number of transcription factors, primarily components of AP-1 such as JUN, JDP2 and ATF2 and thus regulates AP-1 transcriptional activity (PubMed:18307971). Phosphorylates the replication licensing factor CDT1, inhibiting the interaction between CDT1 and the histone H4 acetylase HBO1 to replication origins (PubMed:21856198). Loss of this interaction abrogates the acetylation required for replication initiation (PubMed:21856198). Promotes stressed cell apoptosis by phosphorylating key regulatory factors including p53/TP53 and Yes- associates protein YAP1 (PubMed:21364637). In T-cells, MAPK8 and MAPK9 are required for polarized differentiation of T-helper cells into Th1 cells. Contributes to the survival of erythroid cells by phosphorylating the antagonist of cell death BAD upon EPO stimulation (PubMed:21095239). Mediates starvation-induced BCL2 phosphorylation, BCL2 dissociation from BECN1, and thus activation of autophagy (PubMed:18570871). Phosphorylates STMN2 and hence regulates microtubule dynamics, controlling neurite elongation in cortical neurons (By similarity). In the developing brain, through its cytoplasmic activity on STMN2, negatively regulates the rate of exit from multipolar stage and of radial migration from the ventricular zone (By similarity). Phosphorylates several other substrates including heat shock factor protein 4 (HSF4), the deacetylase SIRT1, ELK1, or the E3 ligase ITCH (PubMed:16581800, PubMed:17296730, PubMed:20027304). Phosphorylates the CLOCK-BMAL1 heterodimer and plays a role in the regulation of the circadian clock (PubMed:22441692). Phosphorylates the heat shock transcription factor HSF1, suppressing HSF1-induced transcriptional activity (PubMed:10747973). Phosphorylates POU5F1, which results in the inhibition of

POU5F1's transcriptional activity and enhances its proteasomal degradation (By similarity). Phosphorylates JUND and this phosphorylation is inhibited in the presence of MEN1 (PubMed:22327296). In neurons, phosphorylates SYT4 which captures neuronal dense core vesicles at synapses (By similarity). Phosphorylates EIF4ENIF1/4-ET in response to oxidative stress, promoting P-body assembly (PubMed:22966201). Phosphorylates SIRT6 in response to oxidative stress, stimulating its mono-ADP-ribosyltransferase activity (PubMed:27568560). Phosphorylates NLRP3, promoting assembly of the NLRP3 inflammasome (PubMed:28943315). Phosphorylates ALKBH5 in response to reactive oxygen species (ROS), promoting ALKBH5 sumoylation and inactivation (PubMed:34048572).

Cellular Location

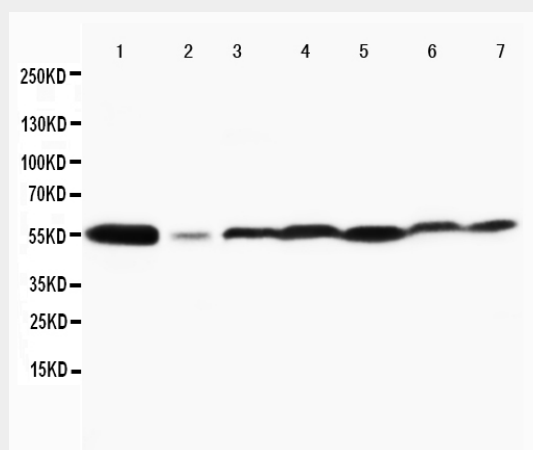
Cytoplasm. Nucleus. Synapse {ECO:0000250|UniProtKB:P49185}. Note=In the cortical neurons, predominantly cytoplasmic and associated with the Golgi apparatus and endosomal fraction. Increased neuronal activity increases phosphorylated form at synapses (By similarity). Colocalizes with POU5F1 in the nucleus. {ECO:0000250|UniProtKB:P49185, ECO:0000250|UniProtKB:Q91Y86}

Anti-MAPK8/9 Antibody - Protocols

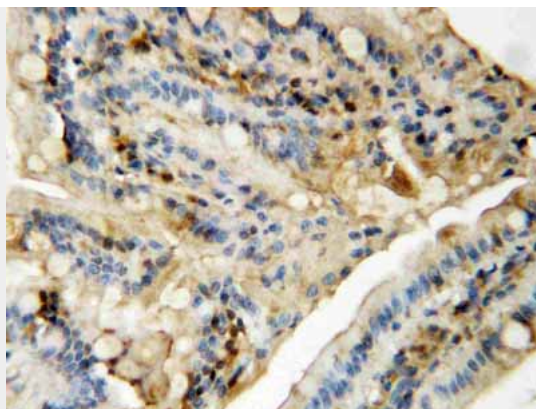
Provided below are standard protocols that you may find useful for product applications.

- [Western Blot](#)
- [Blocking Peptides](#)
- [Dot Blot](#)
- [Immunohistochemistry](#)
- [Immunofluorescence](#)
- [Immunoprecipitation](#)
- [Flow Cytometry](#)
- [Cell Culture](#)

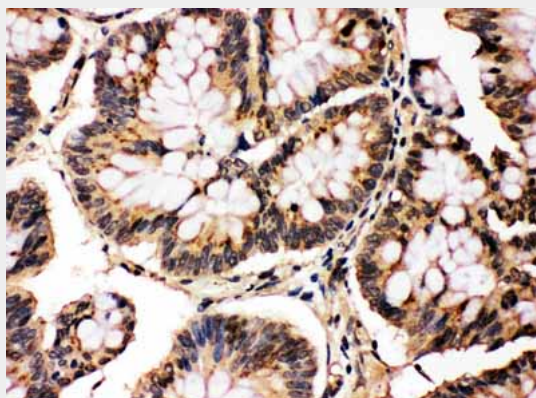
Anti-MAPK8/9 Antibody - Images



Anti-MAPK8/9 antibody, ABO10730, Western blotting
Lane 1: Rat Brain Tissue Lysate
Lane 2: Rat Thymus Tissue Lysate
Lane 3: MCF-7 Cell Lysate
Lane 4: HELA Cell Lysate
Lane 5: JURKAT Cell Lysate
Lane 6: MM231 Cell Lysate
Lane 7: CEM Cell Lysate



Anti-MAPK8/9 antibody, ABO10730, IHC(P)IHC(P): Rat Intestine Tissue



Anti-MAPK8/9 antibody, ABO10730, IHC(P)IHC(P): Human Intestinal Cancer Tissue

Anti-MAPK8/9 Antibody - Background

Mitogen-activated protein kinase 8 is an enzyme that in humans is encoded by the MAPK8 gene. The protein encoded by this gene is a member of the MAP kinase family. The International Radiation Hybrid Mapping Consortium mapped the MAPK8 gene to chromosome 10. The single long open reading frame encodes a putative protein kinase with a predicted mass of 44.2 kD. This kinase play a key role in T cell proliferation, apoptosis and differentiation.