

Anti-Fetuin A Antibody
Catalog # ABO10743**Specification**

Anti-Fetuin A Antibody - Product Information

Application	WB
Primary Accession	P02765
Host	Rabbit
Reactivity	Human
Clonality	Polyclonal
Format	Lyophilized

Description

Rabbit IgG polyclonal antibody for Alpha-2-HS-glycoprotein(AHSG) detection. Tested with WB in Human.

Reconstitution

Add 0.2ml of distilled water will yield a concentration of 500ug/ml.

Anti-Fetuin A Antibody - Additional Information

Gene ID 197

Other Names

Alpha-2-HS-glycoprotein, Alpha-2-Z-globulin, Ba-alpha-2-glycoprotein, Fetuin-A, Alpha-2-HS-glycoprotein chain A, Alpha-2-HS-glycoprotein chain B, AHSG, FETUA

Calculated MW

39325 MW KDa

Application Details

Western blot, 0.1-0.5 µg/ml, Human

Subcellular Localization

Secreted.

Tissue Specificity

Synthesized in liver and selectively concentrated in bone matrix. Secreted in plasma. It is also found in dentin in much higher quantities than other plasma proteins.

Protein Name

Alpha-2-HS-glycoprotein

Contents

Each vial contains 5mg BSA, 0.9mg NaCl, 0.2mg Na₂HPO₄, 0.05mg Thimerosal, 0.05mg NaN₃.

Immunogen

A synthetic peptide corresponding to a sequence at the N-terminus of human Fetuin A (46-62aa DYINQNLPWGYKHTLNQ).

Purification

Immunogen affinity purified.

Cross Reactivity

No cross reactivity with other proteins

Storage

At -20°C for one year. After reconstitution, at 4°C for one month. It can also be aliquotted and stored frozen at -20°C for a longer time. Avoid repeated freezing and thawing.

Sequence Similarities

Belongs to the fetuin family.

Anti-Fetuin A Antibody - Protein Information

Name AHSG

Synonyms FETUA

Function

Promotes endocytosis, possesses opsonic properties and influences the mineral phase of bone. Shows affinity for calcium and barium ions.

Cellular Location

Secreted.

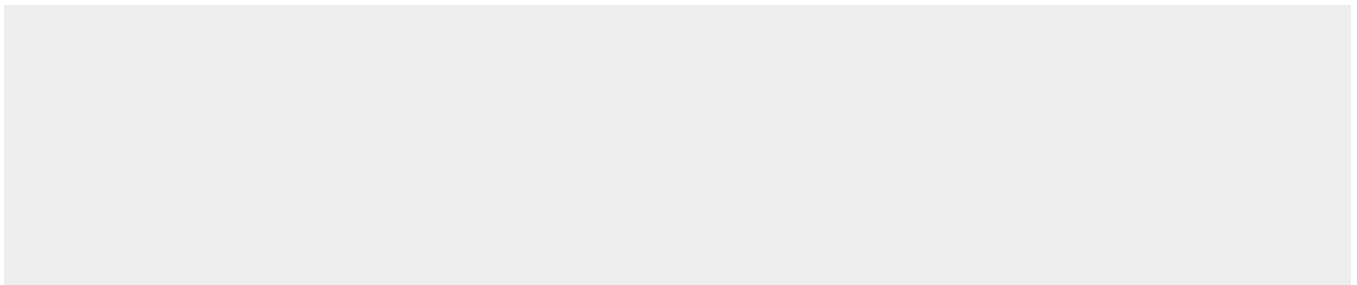
Tissue Location

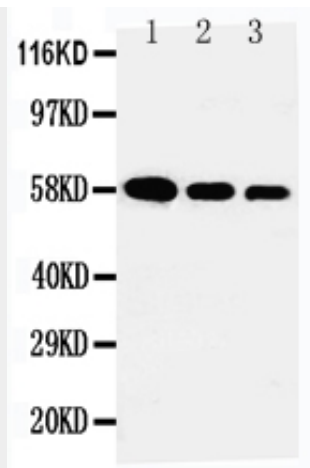
Synthesized in liver and selectively concentrated in bone matrix. Secreted in plasma. It is also found in dentin in much higher quantities than other plasma proteins

Anti-Fetuin A Antibody - Protocols

Provided below are standard protocols that you may find useful for product applications.

- [Western Blot](#)
- [Blocking Peptides](#)
- [Dot Blot](#)
- [Immunohistochemistry](#)
- [Immunofluorescence](#)
- [Immunoprecipitation](#)
- [Flow Cytometry](#)
- [Cell Culture](#)

Anti-Fetuin A Antibody - Images



Anti-Fetuin A antibody, ABO10743, Western blotting Lane 1: Recombinant Human Fetuin A Protein 10ng Lane 2: Recombinant Human Fetuin A Protein 5ng Lane 3: Recombinant Human Fetuin A Protein 2.5ng

Anti-Fetuin A Antibody - Background

Alpha-2-HS-glycoprotein(AHSG) also known as fetuin-A is a protein that in humans is encoded by the AHSG gene. Fetuin-A belongs to the fetuin class of plasma binding proteins and is more abundant in fetal than adult blood. Its gene is mapped to 3q27. The protein is commonly present in the cortical plate of the immature cerebral cortex and bone marrow hemopoietic matrix. It is involved in several functions, such as endocytosis, brain development and the formation of bone tissue.