

**Anti-Galectin-1 Antibody**  
**Catalog # ABO10744****Specification**

---

**Anti-Galectin-1 Antibody - Product Information**

Application	<b>WB, IHC-P</b>
Primary Accession	<a href="#">P09382</a>
Host	<b>Rabbit</b>
Reactivity	<b>Human</b>
Clonality	<b>Polyclonal</b>
Format	<b>Lyophilized</b>

**Description**

Rabbit IgG polyclonal antibody for Galectin 1(LGALS1) detection. Tested with WB, IHC-P in Human.

**Reconstitution**

Add 0.2ml of distilled water will yield a concentration of 500ug/ml.

**Anti-Galectin-1 Antibody - Additional Information**

**Gene ID** 3956

**Other Names**

Galectin-1, Gal-1, 14 kDa laminin-binding protein, HLBP14, 14 kDa lectin, Beta-galactoside-binding lectin L-14-I, Galaptin, HBL, HPL, Lactose-binding lectin 1, Lectin galactoside-binding soluble 1, Putative MAPK-activating protein PM12, S-Lac lectin 1, LGALS1

**Calculated MW**

14716 MW KDa

**Application Details**

Immunohistochemistry(Paraffin-embedded Section), 0.5-1 µg/ml, Human, By Heat<br>Western blot, 0.1-0.5 µg/ml, Human<br>

**Subcellular Localization**

Secreted, extracellular space, extracellular matrix .

**Tissue Specificity**

Expressed in placenta, maternal decidua and fetal membranes. Within placenta, expressed in trophoblasts, stromal cells, villous endothelium, syncytiotrophoblast apical membrane and villous stroma. Within fetal membranes, expressed in amnion, chorioamniotic mesenchyma and chorion (at protein level). Expressed in cardiac, smooth, and skeletal muscle, neurons, thymus, kidney and hematopoietic cells. .

**Protein Name**

Galectin-1(Gal-1)

**Contents**

Each vial contains 5mg BSA, 0.9mg NaCl, 0.2mg Na<sub>2</sub>HPO<sub>4</sub>, 0.05mg Thimerosal, 0.05mg NaN<sub>3</sub>.

**Immunogen**

A synthetic peptide corresponding to a sequence at the C-terminus of human Galectin 1(119-135aa NYMAADGDFKIKCVAFD), different from the related rat and mouse sequences by one amino acid.

**Purification**

Immunogen affinity purified.

**Cross Reactivity**

No cross reactivity with other proteins

**Storage**

**At -20°C for one year. After reconstitution, at 4°C for one month. It can also be aliquotted and stored frozen at -20°C for a longer time. Avoid repeated freezing and thawing.**

**Sequence Similarities**

Contains 1 galectin domain.

**Anti-Galectin-1 Antibody - Protein Information**

**Name** LGALS1 ([HGNC:6561](#))

**Function**

Lectin that binds beta-galactoside and a wide array of complex carbohydrates. Plays a role in regulating apoptosis, cell proliferation and cell differentiation. Inhibits CD45 protein phosphatase activity and therefore the dephosphorylation of Lyn kinase. Strong inducer of T-cell apoptosis. Plays a negative role in Th17 cell differentiation via activation of the receptor CD69 (PubMed:<a href="http://www.uniprot.org/citations/24752896" target="\_blank">24752896</a>).

**Cellular Location**

Secreted, extracellular space, extracellular matrix. Cytoplasm. Secreted Note=Can be secreted; the secretion is dependent on protein unfolding and facilitated by the cargo receptor TMED10; it results in protein translocation from the cytoplasm into the ERGIC (endoplasmic reticulum- Golgi intermediate compartment) followed by vesicle entry and secretion.

**Tissue Location**

Expressed in placenta, maternal decidua and fetal membranes. Within placenta, expressed in trophoblasts, stromal cells, villous endothelium, syncytiotrophoblast apical membrane and villous stroma. Within fetal membranes, expressed in amnion, chorioamniotic mesenchyma and chorion (at protein level). Expressed in cardiac, smooth, and skeletal muscle, neurons, thymus, kidney and hematopoietic cells.

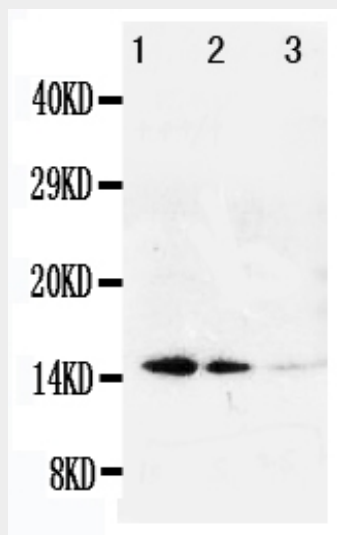
**Anti-Galectin-1 Antibody - Protocols**

Provided below are standard protocols that you may find useful for product applications.

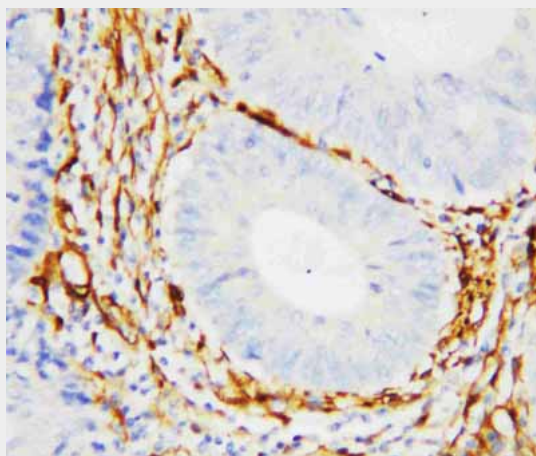
- [Western Blot](#)
- [Blocking Peptides](#)
- [Dot Blot](#)
- [Immunohistochemistry](#)
- [Immunofluorescence](#)
- [Immunoprecipitation](#)

- [Flow Cytometry](#)
- [Cell Culture](#)

#### Anti-Galectin-1 Antibody - Images



Anti-Galectin 1 antibody, ABO10744, Western blotting  
Lane 1: Recombinant Human Galectin-1 Protein 10ng  
Lane 2: Recombinant Human Galectin-1 Protein 5ng  
Lane 3: Recombinant Human Galectin-1 Protein 2.5ng



Anti-Galectin 1 antibody, ABO10744, IHC(P)  
IHC(P): Human Intestinal Cancer Tissue

#### Anti-Galectin-1 Antibody - Background

Galectin-1 is a protein that in humans is encoded by the LGALS1 gene. Galectins belong to a family of related beta-galactoside-binding lectins, also referred to as S-type or S-Lac lectins. Its gene is mapped to 22q12-q13. Galectin-1 was expressed in a subset of slowly dividing subventricular zone astrocytes, which included the neural stem cells. It has been considered as an autocrine negative growth factor that regulates cell proliferation.