

Anti-BCL2L2 Antibody
Catalog # ABO10748**Specification**

Anti-BCL2L2 Antibody - Product Information

Application	WB, IHC-P
Primary Accession	Q92843
Host	Rabbit
Reactivity	Human, Mouse, Rat
Clonality	Polyclonal
Format	Lyophilized

Description

Rabbit IgG polyclonal antibody for Bcl-2-like protein 2(BCL2L2) detection. Tested with WB, IHC-P in Human;Mouse;Rat.

Reconstitution

Add 0.2ml of distilled water will yield a concentration of 500ug/ml.

Anti-BCL2L2 Antibody - Additional Information

Gene ID 599

Other Names

Bcl-2-like protein 2, Bcl2-L-2, Apoptosis regulator Bcl-W, BCL2L2, BCLW, KIAA0271

Calculated MW

20746 MW KDa

Application Details

Immunohistochemistry(Paraffin-embedded Section), 0.5-1 µg/ml, Human, Rat, Mouse, By Heat
Western blot, 0.1-0.5 µg/ml, Human, Rat, Mouse

Subcellular Localization

Mitochondrion membrane ; Peripheral membrane protein . Loosely associated with the mitochondrial membrane in healthy cells. During apoptosis, tightly bound to the membrane.

Tissue Specificity

Expressed (at protein level) in a wide range of tissues with highest levels in brain, spinal cord, testis, pancreas, heart, spleen and mammary glands. Moderate levels found in thymus, ovary and small intestine. Not detected in salivary gland, muscle or liver. Also expressed in cell lines of myeloid, fibroblast and epithelial origin. Not detected in most lymphoid cell lines. .

Protein Name

Bcl-2-like protein 2(Bcl2-L-2)

Contents

Each vial contains 5mg BSA, 0.9mg NaCl, 0.2mg Na2HPO4, 0.05mg Thimerosal, 0.05mg NaN3.

Immunogen

A synthetic peptide corresponding to a sequence in the middle region of human BCL2L2(74-88aa SAQQRFTQVSDELFQ), identical to the related rat and mouse sequences.

Purification

Immunogen affinity purified.

Cross Reactivity

No cross reactivity with other proteins

Storage

At -20°C for one year. After reconstitution, at 4°C for one month. It can also be aliquotted and stored frozen at -20°C for a longer time. Avoid repeated freezing and thawing.

Sequence Similarities

Belongs to the Bcl-2 family.

Anti-BCL2L2 Antibody - Protein Information

Name BCL2L2

Synonyms BCLW, KIAA0271

Function

Promotes cell survival. Blocks dexamethasone-induced apoptosis. Mediates survival of postmitotic Sertoli cells by suppressing death-promoting activity of BAX.

Cellular Location

Mitochondrion membrane; Peripheral membrane protein. Note=Loosely associated with the mitochondrial membrane in healthy cells. During apoptosis, tightly bound to the membrane

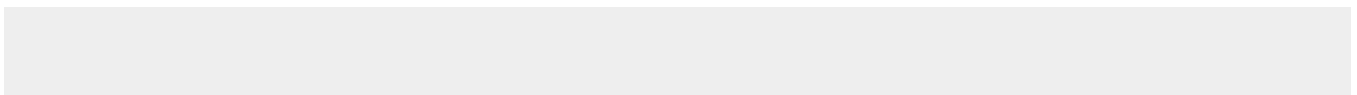
Tissue Location

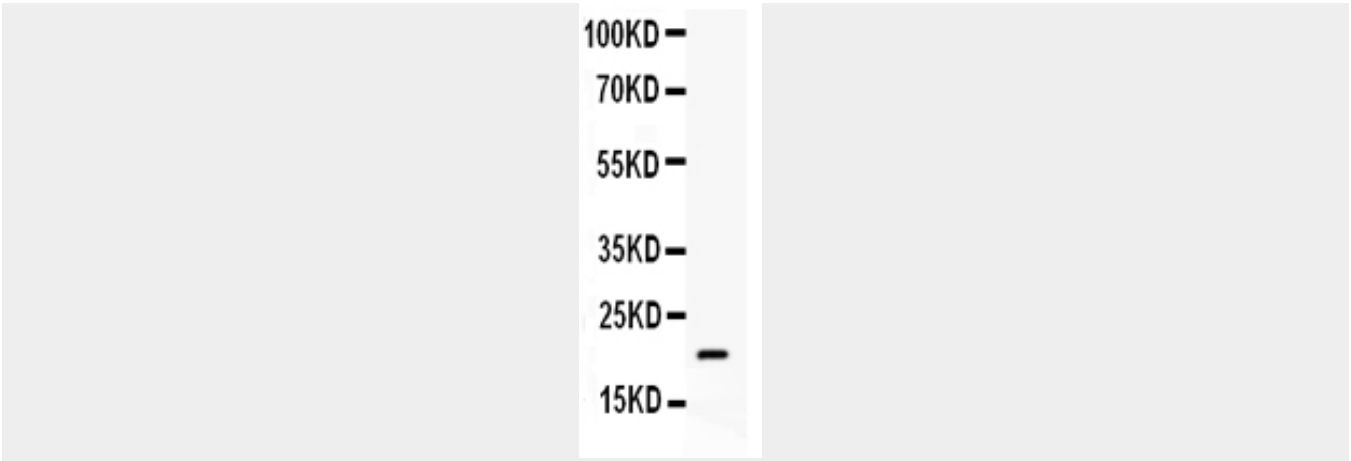
Expressed (at protein level) in a wide range of tissues with highest levels in brain, spinal cord, testis, pancreas, heart, spleen and mammary glands. Moderate levels found in thymus, ovary and small intestine. Not detected in salivary gland, muscle or liver. Also expressed in cell lines of myeloid, fibroblast and epithelial origin. Not detected in most lymphoid cell lines

Anti-BCL2L2 Antibody - Protocols

Provided below are standard protocols that you may find useful for product applications.

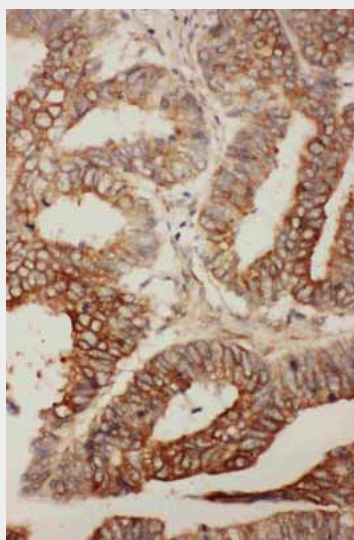
- [Western Blot](#)
- [Blocking Peptides](#)
- [Dot Blot](#)
- [Immunohistochemistry](#)
- [Immunofluorescence](#)
- [Immunoprecipitation](#)
- [Flow Cytometry](#)
- [Cell Culture](#)

Anti-BCL2L2 Antibody - Images



100KD —
70KD —
55KD —
35KD —
25KD —
15KD —

Anti- BCL2L2 antibody, ABO10748, Western blottingAll lanes: Anti BCL2L2 (ABO10748) at 0.5ug/mlWB: HELAWhole Cell Lysate at 40ugPredicted bind size: 21KDObserved bind size: 21KD



Anti- BCL2L2 antibody, ABO10748,IHC(P)IHC(P): Human Rectal Cancer Tissue

Anti-BCL2L2 Antibody - Background

Bcl-2-like protein 2 is a protein that in humans is encoded by the BCL2L2 gene. This gene encodes a pro-survival(anti-apoptotic) member of the bcl-2 protein family. Its gene is mapped to human chromosome 14q11.2-q12. In all, it has got 193 amino acids. Generally speaking, the BCL2 can be found in brain, colon and salivary gland. Acting as the anti- and pro-apoptotic regulators, it has played a vital role in reducing the cell apoptosis under cytotoxic conditions.