

Anti-Annexin VI Antibody
Catalog # ABO10756**Specification**

Anti-Annexin VI Antibody - Product Information

Application	WB, IHC
Primary Accession	P08133
Host	Rabbit
Reactivity	Human, Mouse, Rat
Clonality	Polyclonal
Format	Lyophilized

Description

Rabbit IgG polyclonal antibody for Annexin A6(ANXA6) detection. Tested with WB, IHC-P, IHC-F in Human;Mouse;Rat.

Reconstitution

Add 0.2ml of distilled water will yield a concentration of 500ug/ml.

Anti-Annexin VI Antibody - Additional Information

Gene ID 309

Other Names

Annexin A6, 67 kDa calelectrin, Annexin VI, Annexin-6, Calphobindin-II, CPB-II, Chromobindin-20, Lipocortin VI, Protein III, p68, p70, ANXA6, ANX6

Calculated MW

75873 MW KDa

Application Details

Immunohistochemistry(Frozen Section), 0.5-1 µg/ml, Rat, Human, Mouse
Immunohistochemistry(Paraffin-embedded Section), 0.5-1 µg/ml, Human, Rat, Mouse, By Heat
Western blot, 0.1-0.5 µg/ml, Human, Rat, Mouse

Subcellular Localization

Cytoplasm . Melanosome . Identified by mass spectrometry in melanosome fractions from stage I to stage IV.

Protein Name

Annexin A6

Contents

Each vial contains 5mg BSA, 0.9mg NaCl, 0.2mg Na₂HPO₄, 0.05mg Thimerosal, 0.05mg NaN₃.

Immunogen

A synthetic peptide corresponding to a sequence at the C-terminus of human Annexin VI(636-652aa NIRREFIEKYDKSLHQA), identical to the related mouse and rat sequences.

Purification

Immunogen affinity purified.

Cross Reactivity

No cross reactivity with other proteins

Storage

At -20°C for one year. After reconstitution, at 4°C for one month. It can also be aliquotted and stored frozen at -20°C for a longer time. Avoid repeated freezing and thawing.

Sequence Similarities

Belongs to the annexin family.

Anti-Annexin VI Antibody - Protein Information

Name ANXA6

Synonyms ANX6

Function

May associate with CD21. May regulate the release of Ca(2+) from intracellular stores.

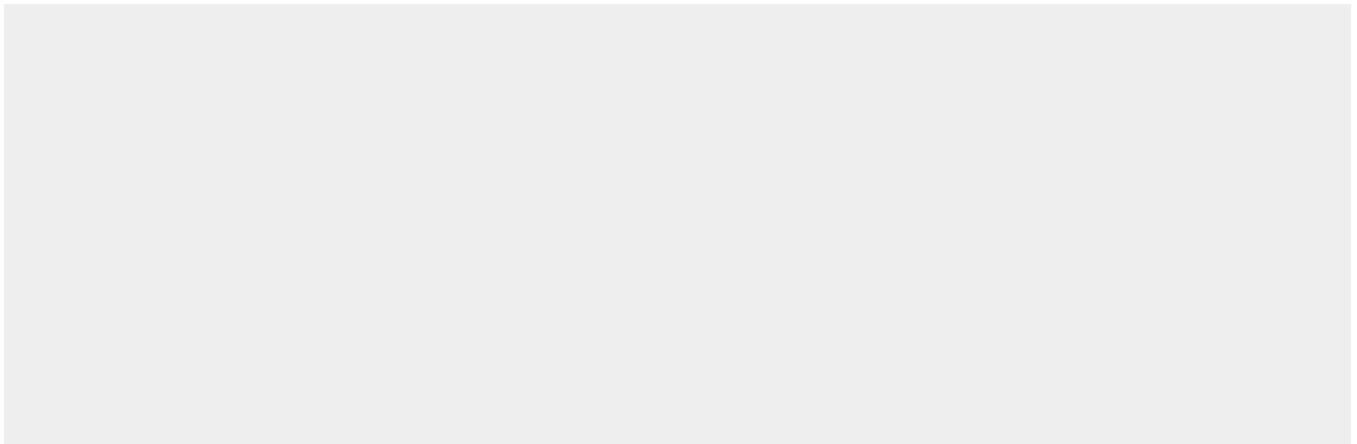
Cellular Location

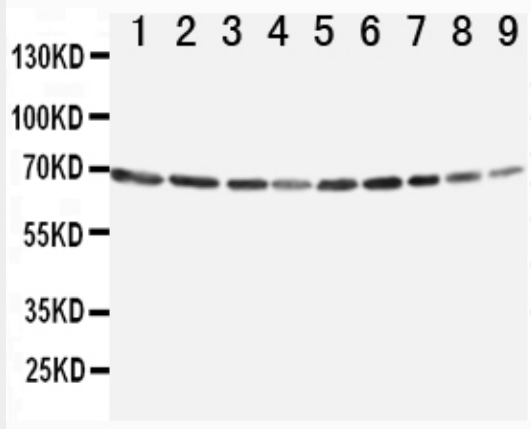
Cytoplasm. Melanosome. Note=Identified by mass spectrometry in melanosome fractions from stage I to stage IV

Anti-Annexin VI Antibody - Protocols

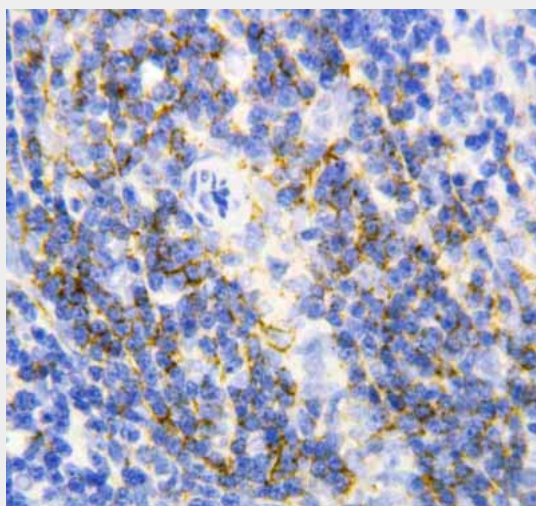
Provided below are standard protocols that you may find useful for product applications.

- [Western Blot](#)
- [Blocking Peptides](#)
- [Dot Blot](#)
- [Immunohistochemistry](#)
- [Immunofluorescence](#)
- [Immunoprecipitation](#)
- [Flow Cytometry](#)
- [Cell Culture](#)

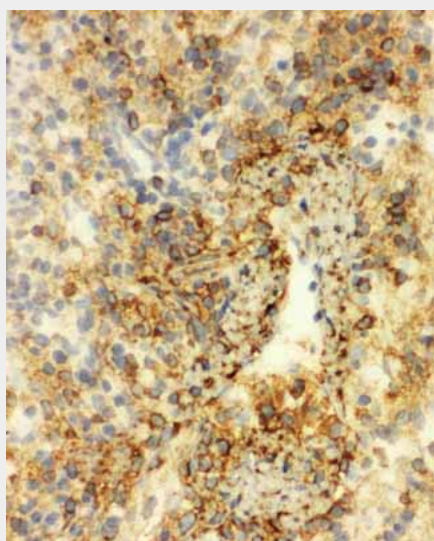
Anti-Annexin VI Antibody - Images



Anti-Annexin VI antibody, ABO10756, Western blotting
Lane 1: Rat Ovary Tissue Lysate
Lane 2: Rat Liver Tissue Lysate
Lane 3: Rat Intestinum Tenue Tissue Lysate
Lane 4: Rat Brain Tissue Lysate
Lane 5: A549 Cell Lysate
Lane 6: JURKAT Cell Lysate
Lane 7: RAJI Cell Lysate
Lane 8: CEM Cell Lysate
Lane 9: SMMC Cell Lysate



Anti-Annexin VI antibody, ABO10756, IHC(P) IHC(P): Rat Spleen Tissue



Anti-Annexin VI antibody, ABO10756, IHC(F) IHC(F): Rat Spleen Tissue

Anti-Annexin VI Antibody - Background

Annexin A6 (ANXA6) is a member of a family of proteins that bind membrane or cytoskeleton in a Ca^{2+} -dependent manner. These proteins are characterized by homologous amino acid sequences that are present in multiple copies in each protein. ANXA6 gene is assigned to 5q32-q34 by use of a cDNA clone to probe genomic DNA from rodent-human somatic cell hybrids and for in situ hybridization. The ANX6 gene is approximately 60 kb long and contains 26 exons. The genomic sequence at the 3-prime end does not contain a canonical polyadenylation signal. Ca^{2+} -dependent binding between CRHSP28 and ANXA6 is required for acinar cell membrane trafficking events and digestive enzyme secretion