

**Anti-CA3 Antibody**  
**Catalog # ABO10758****Specification**

---

**Anti-CA3 Antibody - Product Information**

Application	WB, IHC-P
Primary Accession	<a href="#">P07451</a>
Host	Rabbit
Reactivity	Human, Mouse, Rat
Clonality	Polyclonal
Format	Lyophilized

**Description**

Rabbit IgG polyclonal antibody for Carbonic anhydrase 3(CA3) detection. Tested with WB, IHC-P in Human;Mouse;Rat.

**Reconstitution**

Add 0.2ml of distilled water will yield a concentration of 500ug/ml.

**Anti-CA3 Antibody - Additional Information**

**Gene ID** 761

**Other Names**

Carbonic anhydrase 3, 4.2.1.1, Carbonate dehydratase III, Carbonic anhydrase III, CA-III, CA3

**Calculated MW**

29557 MW KDa

**Application Details**

Immunohistochemistry(Paraffin-embedded Section), 0.5-1 µg/ml, Rat, Mouse, By Heat<br><br>Western blot, 0.1-0.5 µg/ml, Human<br>

**Subcellular Localization**

Cytoplasm.

**Tissue Specificity**

Muscle specific.

**Protein Name**

Carbonic anhydrase 3

**Contents**

Each vial contains 5mg BSA, 0.9mg NaCl, 0.2mg Na<sub>2</sub>HPO<sub>4</sub>, 0.05mg Thimerosal, 0.05mg NaN<sub>3</sub>.

**Immunogen**

A synthetic peptide corresponding to a sequence at the N-terminus of human CA3 (2-20aa AKEWGYASHNGPDHWHELF), different from the related mouse and rat sequences by two amino acids.

**Purification**

Immunogen affinity purified.

**Cross Reactivity**

No cross reactivity with other proteins

**Storage**

**At -20°C for one year. After reconstitution, at 4°C for one month. It can also be aliquotted and stored frozen at -20°C for a longer time. Avoid repeated freezing and thawing.**

**Anti-CA3 Antibody - Protein Information**

**Name** CA3 {ECO:0000303|PubMed:9651514, ECO:0000312|HGNC:HGNC:1374}

**Function**

Reversible hydration of carbon dioxide.

**Cellular Location**

Cytoplasm.

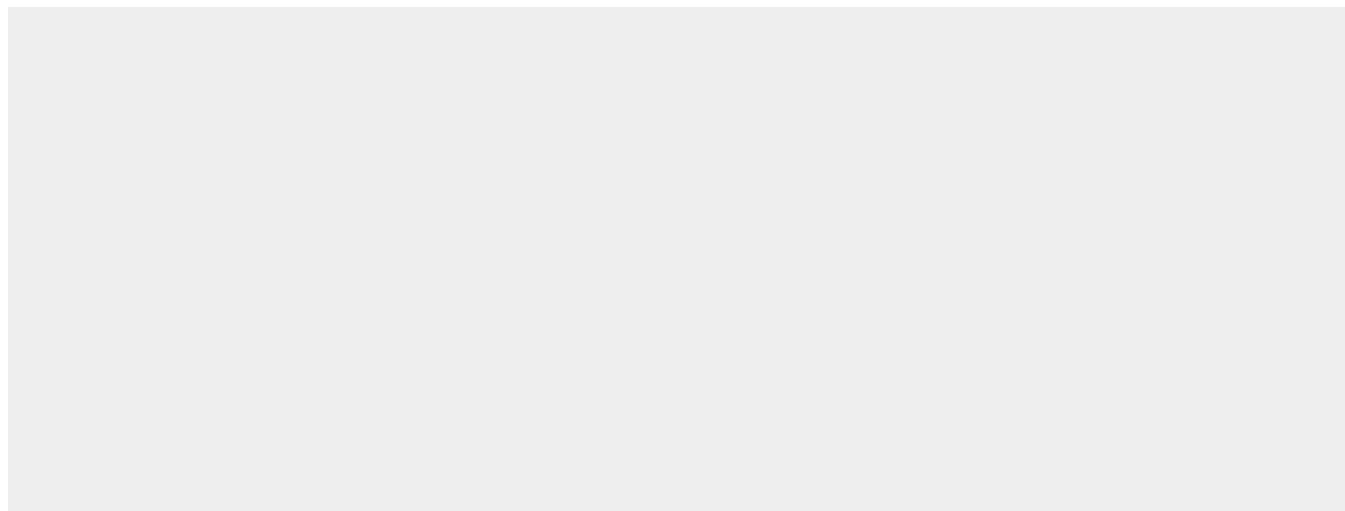
**Tissue Location**

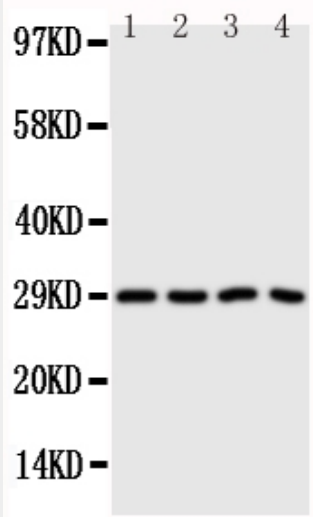
Muscle specific.

**Anti-CA3 Antibody - Protocols**

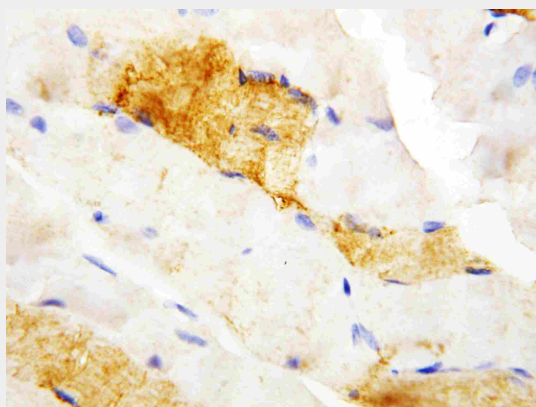
Provided below are standard protocols that you may find useful for product applications.

- [Western Blot](#)
- [Blocking Peptides](#)
- [Dot Blot](#)
- [Immunohistochemistry](#)
- [Immunofluorescence](#)
- [Immunoprecipitation](#)
- [Flow Cytometry](#)
- [Cell Culture](#)

**Anti-CA3 Antibody - Images**



Anti-CA3 antibody, ABO10758, Western blotting  
Lane 1: SMMC Cell Lysate  
Lane 2: HELA Cell Lysate  
Lane 3: SW620 Cell Lysate  
Lane 4: SCG Cell Lysate



Anti-CA3 antibody, ABO10758, IHC(P)  
IHC(P): Rat Skeletal Muscle Tissue

### Anti-CA3 Antibody - Background

Carbonic anhydrase III(CA3) is an enzyme that in humans is encoded by the CA3 gene. CA3 is a member of a multigene family(at least six separate genes are known) that encode carbonic anhydrase isozymes. The gene spans 10.3 kb and contains seven exons and six introns. Using a cDNA clone of the CA3 gene in the study of human-rodent hybrids, the gene was mapped to chromosome 8 which carries a cluster of CA genes. CA3 is found in high concentration in muscle. CA3 is used in conjunction with creatine kinase detection of the carrier state for Duchenne muscular dystrophy.