

**Anti-Caspase-6(P18) Antibody**  
**Catalog # ABO10761****Specification**

---

**Anti-Caspase-6(P18) Antibody - Product Information**

Application	WB, IHC-P
Primary Accession	<a href="#">P55212</a>
Host	Rabbit
Reactivity	Human
Clonality	Polyclonal
Format	Lyophilized

**Description**

Rabbit IgG polyclonal antibody for Caspase-6(CASP6) detection. Tested with WB, IHC-P in Human.

**Reconstitution**

Add 0.2ml of distilled water will yield a concentration of 500ug/ml.

**Anti-Caspase-6(P18) Antibody - Additional Information**

**Gene ID** 839

**Other Names**

Caspase-6, CASP-6, 3.4.22.59, Apoptotic protease Mch-2, Caspase-6 subunit p18, Caspase-6 subunit p11, CASP6, MCH2

**Calculated MW**

33310 MW KDa

**Application Details**

Immunohistochemistry(Paraffin-embedded Section), 0.5-1 µg/ml, Human, By Heat<br>Western blot, 0.1-0.5 µg/ml, Human<br>

**Subcellular Localization**

Cytoplasm.

**Protein Name**

Caspase-6(CASP-6)

**Contents**

Each vial contains 5mg BSA, 0.9mg NaCl, 0.2mg Na<sub>2</sub>HPO<sub>4</sub>, 0.05mg Thimerosal, 0.05mg NaN<sub>3</sub>.

**Immunogen**

A synthetic peptide corresponding to a sequence at the N-terminus of human Caspase-6(P18)(24-44aa AFYKREMFDPAEKYKMDHRRR).

**Purification**

Immunogen affinity purified.

**Cross Reactivity**

No cross reactivity with other proteins

Storage

**At -20°C for one year. After r°Constitution, at 4°C for one month. It°Can also be aliquotted and stored frozen at -20°C for a longer time.Avoid repeated freezing and thawing.**

### Sequence Similarities

Belongs to the peptidase C14A family.

## Anti-Caspase-6(P18) Antibody - Protein Information

**Name** CASP6 ([HGNC:1507](#))

### Function

Cysteine protease that plays essential roles in programmed cell death, axonal degeneration, development and innate immunity (PubMed:<a href="http://www.uniprot.org/citations/19133298" target="\_blank">19133298</a>, PubMed:<a href="http://www.uniprot.org/citations/22858542" target="\_blank">22858542</a>, PubMed:<a href="http://www.uniprot.org/citations/27032039" target="\_blank">27032039</a>, PubMed:<a href="http://www.uniprot.org/citations/28864531" target="\_blank">28864531</a>, PubMed:<a href="http://www.uniprot.org/citations/30420425" target="\_blank">30420425</a>, PubMed:<a href="http://www.uniprot.org/citations/32298652" target="\_blank">32298652</a>, PubMed:<a href="http://www.uniprot.org/citations/8663580" target="\_blank">8663580</a>). Acts as a non- canonical executioner caspase during apoptosis: localizes in the nucleus and cleaves the nuclear structural protein NUMA1 and lamin A/LMNA thereby inducing nuclear shrinkage and fragmentation (PubMed:<a href="http://www.uniprot.org/citations/11953316" target="\_blank">11953316</a>, PubMed:<a href="http://www.uniprot.org/citations/17401638" target="\_blank">17401638</a>, PubMed:<a href="http://www.uniprot.org/citations/8663580" target="\_blank">8663580</a>, PubMed:<a href="http://www.uniprot.org/citations/9463409" target="\_blank">9463409</a>). Lamin-A/LMNA cleavage is required for chromatin condensation and nuclear disassembly during apoptotic execution (PubMed:<a href="http://www.uniprot.org/citations/11953316" target="\_blank">11953316</a>). Acts as a regulator of liver damage by promoting hepatocyte apoptosis: in absence of phosphorylation by AMP-activated protein kinase (AMPK), catalyzes cleavage of BID, leading to cytochrome c release, thereby participating in nonalcoholic steatohepatitis (PubMed:<a href="http://www.uniprot.org/citations/32029622" target="\_blank">32029622</a>). Cleaves PARK7/DJ-1 in cells undergoing apoptosis (By similarity). Involved in intrinsic apoptosis by mediating cleavage of RIPK1 (PubMed:<a href="http://www.uniprot.org/citations/22858542" target="\_blank">22858542</a>). Furthermore, cleaves many transcription factors such as NF-kappa-B and cAMP response element-binding protein/CREBBP (PubMed:<a href="http://www.uniprot.org/citations/10559921" target="\_blank">10559921</a>, PubMed:<a href="http://www.uniprot.org/citations/14657026" target="\_blank">14657026</a>). Cleaves phospholipid scramblase proteins XKR4 and XKR9 (By similarity). In addition to apoptosis, involved in different forms of programmed cell death (PubMed:<a href="http://www.uniprot.org/citations/32298652" target="\_blank">32298652</a>). Plays an essential role in defense against viruses by acting as a central mediator of the ZBP1-mediated pyroptosis, apoptosis, and necroptosis (PANoptosis), independently of its cysteine protease activity (PubMed:<a href="http://www.uniprot.org/citations/32298652" target="\_blank">32298652</a>). PANoptosis is a unique inflammatory programmed cell death, which provides a molecular scaffold that allows the interactions and activation of machinery required for inflammasome/pyroptosis, apoptosis and necroptosis (PubMed:<a href="http://www.uniprot.org/citations/32298652" target="\_blank">32298652</a>). Mechanistically, interacts with RIPK3 and enhances the interaction between RIPK3 and ZBP1, leading to ZBP1-mediated inflammasome activation and cell death (PubMed:<a href="http://www.uniprot.org/citations/32298652" target="\_blank">32298652</a>). Plays an

essential role in axon degeneration during axon pruning which is the remodeling of axons during neurogenesis but not apoptosis (By similarity). Regulates B-cell programs both during early development and after antigen stimulation (By similarity).

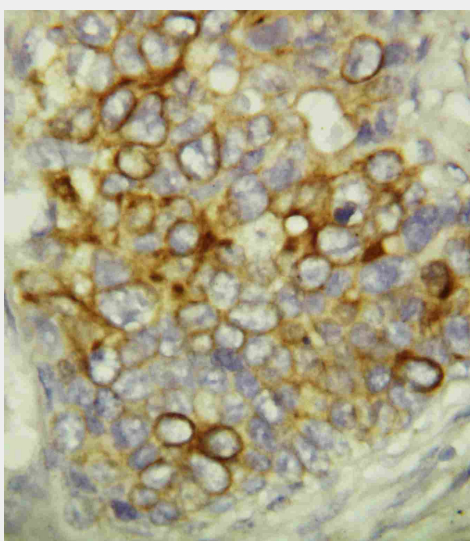
**Cellular Location**

Cytoplasm. Nucleus

**Anti-Caspase-6(P18) Antibody - Protocols**

Provided below are standard protocols that you may find useful for product applications.

- [Western Blot](#)
- [Blocking Peptides](#)
- [Dot Blot](#)
- [Immunohistochemistry](#)
- [Immunofluorescence](#)
- [Immunoprecipitation](#)
- [Flow Cytometry](#)
- [Cell Culture](#)

**Anti-Caspase-6(P18) Antibody - Images**

Anti-Caspase-6(P18) antibody, ABO10761, IHC(P)IHC(P): Human Mammary Cancer Tissue



Anti-Caspase-6(P18) antibody, ABO10761, Western blotting  
Lane 1: MCF-7 Cell Lysate  
Lane 2: HELA Cell Lysate  
Lane 3: JURKAT Cell Lysate  
Lane 4: CEM Cell Lysate  
Lane 5: SW620 Cell Lysate

#### **Anti-Caspase-6(P18) Antibody - Background**

Caspase 6 is an enzyme that in humans is encoded by the caspase 6 gene. This gene encodes a protein that is a member of the cysteine-aspartic acid protease(caspase) family. Using radiation hybrid mapping, the Caspase 6 gene is localized to human chromosome 4q25-q26. Caspase 6 functions as a downstream enzyme in the caspase activation cascade. And Caspase 6 can cleave lamin A to its signature apoptotic fragment.