

Anti-DDT Antibody
Catalog # ABO10769**Specification**

Anti-DDT Antibody - Product Information

| | |
|-------------------|------------------------|
| Application | WB, IHC-P |
| Primary Accession | P30046 |
| Host | Rabbit |
| Reactivity | Human, Mouse, Rat |
| Clonality | Polyclonal |
| Format | Lyophilized |

Description

Rabbit IgG polyclonal antibody for D-dopachrome decarboxylase(DDT) detection. Tested with WB, IHC-P in Human;Mouse;Rat.

Reconstitution

Add 0.2ml of distilled water will yield a concentration of 500ug/ml.

Anti-DDT Antibody - Additional Information

Gene ID 1652

Other Names

D-dopachrome decarboxylase, 4.1.1.84, D-dopachrome tautomerase, Phenylpyruvate tautomerase II, DDT

Calculated MW

12712 MW KDa

Application Details

Immunohistochemistry(Paraffin-embedded Section), 0.5-1 µg/ml, Human, By Heat
Western blot, 0.1-0.5 µg/ml, Rat, Mouse

Subcellular Localization

Cytoplasm .

Protein Name

D-dopachrome decarboxylase

Contents

Each vial contains 5mg BSA, 0.9mg NaCl, 0.2mg Na₂HPO₄, 0.05mg Thimerosal, 0.05mg NaN₃.

Immunogen

A synthetic peptide corresponding to a sequence at the C-terminus of human DDT(99-118aa RFFPLESWQIGKIGTVMFTL), different from the related mouse and rat sequence by two amino acids.

Purification

Immunogen affinity purified.

Cross Reactivity

No cross reactivity with other proteins

Storage

At -20°C for one year. After reconstitution, at 4°C for one month. It can also be aliquotted and stored frozen at -20°C for a longer time. Avoid repeated freezing and thawing.

Anti-DDT Antibody - Protein Information

Name DDT

Function

Tautomerization of D-dopachrome with decarboxylation to give 5,6-dihydroxyindole (DHI).

Cellular Location

Cytoplasm.

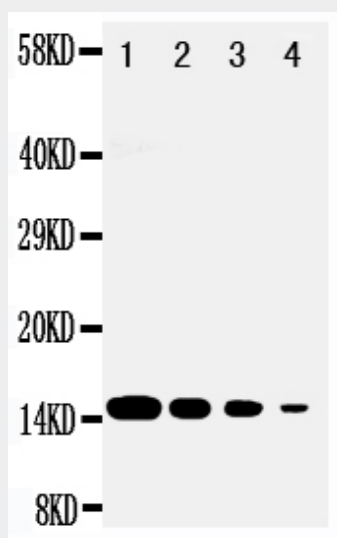
Tissue Location

Highly expressed in the liver and at lower levels in the heart, lung and pancreas.

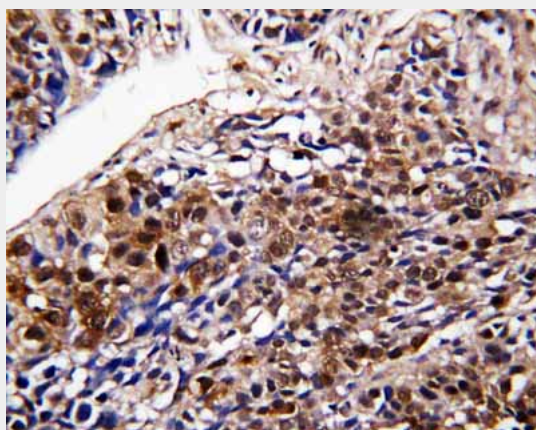
Anti-DDT Antibody - Protocols

Provided below are standard protocols that you may find useful for product applications.

- [Western Blot](#)
- [Blocking Peptides](#)
- [Dot Blot](#)
- [Immunohistochemistry](#)
- [Immunofluorescence](#)
- [Immunoprecipitation](#)
- [Flow Cytometry](#)
- [Cell Culture](#)

Anti-DDT Antibody - Images

Anti-DDT antibody, ABO10769, Western blotting
Lane 1: Recombinant Human DDT Protein 10ng
Lane 2: Recombinant Human DDT Protein 5ng
Lane 3: Recombinant Human DDT Protein 2.5ng
Lane 4: Recombinant Human DDT Protein 1.25ng



Anti-DDT antibody, ABO10769, IHC(P)IHC(P): Human Lung Cancer Tissue

Anti-DDT Antibody - Background

DDT, D-dopachrome tautomerase, converts D-dopachrome into 5,6-dihydroxyindole. Northern blot analysis revealed that DDT was expressed as a 0.6-kb mRNA in all tissues tested, with the strongest expression in liver. The DDT gene in human and mouse is identical in exon structure to the MIF gene. Both genes have 2 introns that are located at equivalent positions, relative to a 2-fold repeat in protein structure. The genes for DDT and MIF are closely linked on human chromosome 22 and mouse chromosome 10.