

Anti-Beta Defensin 1 Antibody
Catalog # ABO10770**Specification**

Anti-Beta Defensin 1 Antibody - Product Information

Application	WB, IHC-P
Primary Accession	P60022
Host	Rabbit
Reactivity	Human
Clonality	Polyclonal
Format	Lyophilized

Description

Rabbit IgG polyclonal antibody for Beta-defensin 1(DEFB1) detection. Tested with WB, IHC-P in Human.

Reconstitution

Add 0.2ml of distilled water will yield a concentration of 500ug/ml.

Anti-Beta Defensin 1 Antibody - Additional Information

Gene ID 1672

Other Names

Beta-defensin 1, BD-1, hBD-1, Defensin, beta 1, DEFB1, BD1, HBD1

Calculated MW

7420 MW KDa

Application Details

Immunohistochemistry(Paraffin-embedded Section), 0.5-1 µg/ml, Human, By Heat
Western blot, 0.1-0.5 µg/ml, Human

Subcellular Localization

Secreted.

Tissue Specificity

Plasma.

Protein Name

Beta-defensin 1(BD-1/hBD-1)

Contents

Each vial contains 5mg BSA, 0.9mg NaCl, 0.2mg Na₂HPO₄, 0.05mg Thimerosal, 0.05mg NaN₃.

Immunogen

A synthetic peptide corresponding to a sequence at the C-terminus of human beta Defensin 1(52-68aa FTKIQGTCYRGKAKCCK).

Purification

Immunogen affinity purified.

Cross Reactivity

No cross reactivity with other proteins

Storage

At -20°C for one year. After reconstitution, at 4°C for one month. It can also be aliquotted and stored frozen at -20°C for a longer time. Avoid repeated freezing and thawing.

Sequence Similarities

Belongs to the beta-defensin family.

Anti-Beta Defensin 1 Antibody - Protein Information

Name DEFB1

Synonyms BD1, HBD1

Function

Has bactericidal activity. May act as a ligand for C-C chemokine receptor CCR6. Positively regulates the sperm motility and bactericidal activity in a CCR6-dependent manner. Binds to CCR6 and triggers Ca²⁺ mobilization in the sperm which is important for its motility (PubMed: [25122636](http://www.uniprot.org/citations/25122636)).

Cellular Location

Secreted. Membrane. Note=Associates with tumor cell membrane-derived microvesicles (PubMed:23938203)

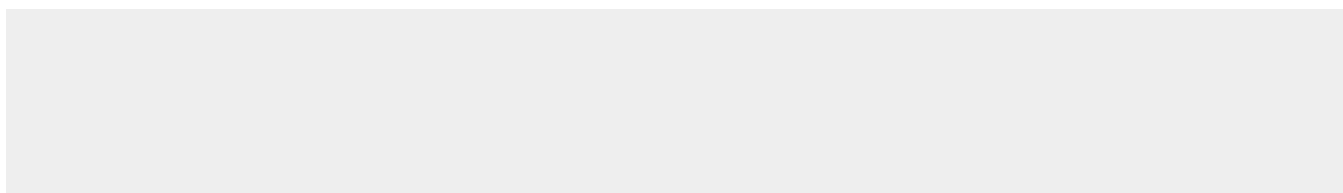
Tissue Location

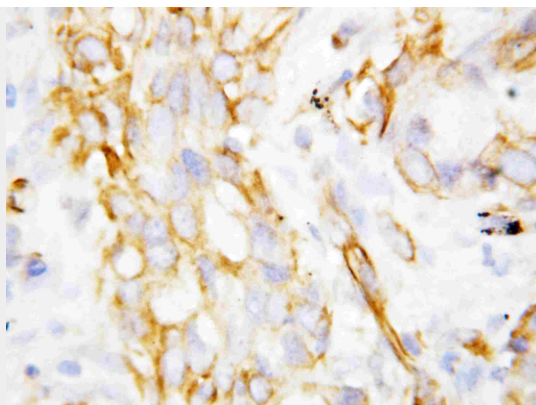
Blood plasma. Sperm. Highly expressed in the lower head and midpiece of sperm. Significantly reduced levels found in the sperms of asthenozoospermia and leukocytospermia patients (at protein level).

Anti-Beta Defensin 1 Antibody - Protocols

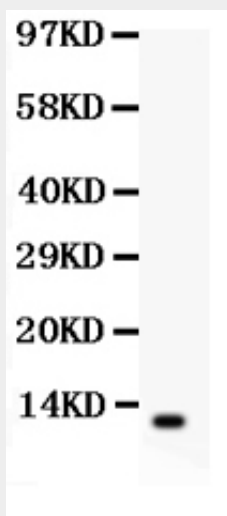
Provided below are standard protocols that you may find useful for product applications.

- [Western Blot](#)
- [Blocking Peptides](#)
- [Dot Blot](#)
- [Immunohistochemistry](#)
- [Immunofluorescence](#)
- [Immunoprecipitation](#)
- [Flow Cytometry](#)
- [Cell Culture](#)

Anti-Beta Defensin 1 Antibody - Images



Anti-beta Defensin 1 antibody, ABO10770, IHC(P)IHC(P): Lung Cancer Tissue



Anti-beta Defensin 1 antibody, ABO10770, Western blotting All lanes: Anti Defensin 1 (ABO10770) at 0.5ug/ml WB : COLO320 Whole Cell Lysate at 40ug Predicted bind size: 7KD Observed bind size: 7KD

Anti-Beta Defensin 1 Antibody - Background

DEFB1, Beta-defensin 1, is a protein that in humans is encoded by the DEFB1 gene. DEFB1 belongs to the defensin family. Defensins form a family of microbicidal and cytotoxic peptides made by neutrophils. The DEFB1 gene spans more than 7 kb and includes a large 6,962-bp intron. By 2-color fluorescence in situ hybridization on both metaphase chromosomes and released chromatin fiber, the DEFB1 gene is mapped to 8p23.2-p23.1, within 100 to 150 kb of the gene for human neutrophil defensin-alpha-1. DEFB1 may augment neonatal host defenses through antimicrobial effects or prime the adaptive immune system at mucosal surfaces.