

**Anti-Eotaxin 3 Antibody**  
**Catalog # ABO10771****Specification**

---

**Anti-Eotaxin 3 Antibody - Product Information**

Application	<b>WB</b>
Primary Accession	<a href="#">Q9Y258</a>
Host	<b>Rabbit</b>
Reactivity	<b>Human</b>
Clonality	<b>Polyclonal</b>
Format	<b>Lyophilized</b>

**Description**

Rabbit IgG polyclonal antibody for C-C motif chemokine 26(CCL26) detection. Tested with WB in Human.

**Reconstitution**

Add 0.2ml of distilled water will yield a concentration of 500ug/ml.

**Anti-Eotaxin 3 Antibody - Additional Information**

**Gene ID** 10344

**Other Names**

C-C motif chemokine 26, CC chemokine IMAC, Eotaxin-3, Macrophage inflammatory protein 4-alpha, MIP-4-alpha, Small-inducible cytokine A26, Thymic stroma chemokine-1, TSC-1, CCL26, SCYA26

**Calculated MW**

10648 MW KDa

**Application Details**

Western blot, 0.1-0.5 µg/ml, Human<br>

**Subcellular Localization**

Secreted.

**Tissue Specificity**

Ubiquitously expressed at low levels in various tissues including heart and ovary.

**Protein Name**

C-C motif chemokine 26

**Contents**

Each vial contains 5mg BSA, 0.9mg NaCl, 0.2mg Na<sub>2</sub>HPO<sub>4</sub>, 0.05mg Thimerosal, 0.05mg NaN<sub>3</sub>.

**Immunogen**

A synthetic peptide corresponding to a sequence at the C-terminus of human Eotaxin 3(73-94aa CTHPRKKWVQKYISLLKTPKQL).

**Purification**

Immunogen affinity purified.

**Cross Reactivity**

No cross reactivity with other proteins

**Storage**

**At -20°C for one year. After reconstitution, at 4°C for one month. It can also be aliquotted and stored frozen at -20°C for a longer time. Avoid repeated freezing and thawing.**

**Sequence Similarities**

Belongs to the intercrine beta (chemokine CC) family.

**Anti-Eotaxin 3 Antibody - Protein Information**

**Name** CCL26 ([HGNC:10625](#))

**Function**

Chemoattractant for eosinophils and basophils (PubMed: [10415065](http://www.uniprot.org/citations/10415065), PubMed: [10488147](http://www.uniprot.org/citations/10488147)). Acts as a ligand for C-C chemokine receptor CCR3 which triggers Ca<sup>2+</sup> mobilization in eosinophils (PubMed: [10415065](http://www.uniprot.org/citations/10415065), PubMed: [10488147](http://www.uniprot.org/citations/10488147), PubMed: [11425309](http://www.uniprot.org/citations/11425309)). Also acts as a ligand for CX3C chemokine receptor CX3CR1, inducing cell chemotaxis (PubMed: [20974991](http://www.uniprot.org/citations/20974991)).

**Cellular Location**

Secreted.

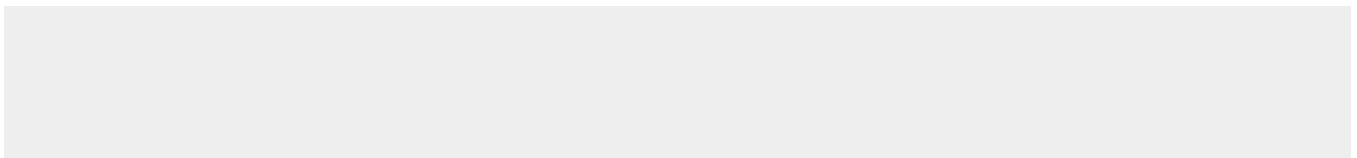
**Tissue Location**

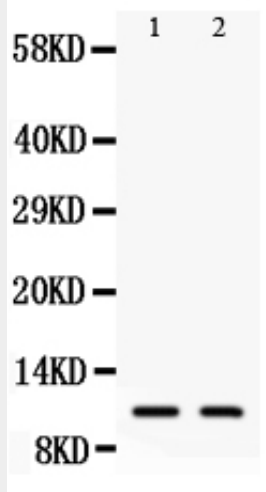
Ubiquitously expressed at low levels in various tissues including heart and ovary.

**Anti-Eotaxin 3 Antibody - Protocols**

Provided below are standard protocols that you may find useful for product applications.

- [Western Blot](#)
- [Blocking Peptides](#)
- [Dot Blot](#)
- [Immunohistochemistry](#)
- [Immunofluorescence](#)
- [Immunoprecipitation](#)
- [Flow Cytometry](#)
- [Cell Culture](#)

**Anti-Eotaxin 3 Antibody - Images**



Anti-Eotaxin3 antibody, ABO10771, Western blottingAll lanes: Anti Eotaxin3 (ABO10771) at 0.5ug/mlLane 1: COLO320 Whole Cell Lysate at 40ugLane 2: A549 Whole Cell Lysate at 40ugPredicted bind size: 11KDObserved bind size: 11KD

#### **Anti-Eotaxin 3 Antibody - Background**

Eotaxin-3 is a small cytokine belonging to the CC chemokine family that is also called CCL26, Chemokine(C-C motif) ligand 26. Chemokines play pivotal roles in health and disease by controlling migration and tissue localization of specific types of cells expressing their cognate receptors. Eotaxin-3 is chemotactic for eosinophils and basophils and elicits its effects by binding to the cell surface chemokine receptor CCR3. It is expressed by several tissues including heart, lung and ovary, and in endothelial cells that have been stimulated with the cytokine interleukin 4. This gene for chemokine is located on human chromosome 7. Eotaxin-3 induced migration of eosinophils and basophils only at a 10-fold higher concentration than eotaxin.