

**Anti-GM-CSF Antibody**  
**Catalog # ABO10776****Specification**

---

**Anti-GM-CSF Antibody - Product Information**

Application	WB
Primary Accession	<a href="#">P04141</a>
Host	Rabbit
Reactivity	Human
Clonality	Polyclonal
Format	Lyophilized

**Description**

Rabbit IgG polyclonal antibody for Granulocyte-macrophage colony-stimulating factor(CSF2) detection. Tested with WB in Human.

**Reconstitution**

Add 0.2ml of distilled water will yield a concentration of 500ug/ml.

**Anti-GM-CSF Antibody - Additional Information**

**Gene ID** 1437

**Other Names**

Granulocyte-macrophage colony-stimulating factor, GM-CSF, Colony-stimulating factor, CSF, Molgramostin, Sargramostim, CSF2, GMCSF

**Calculated MW**

16295 MW KDa

**Application Details**

Western blot, 0.1-0.5 µg/ml, Human<br>

**Subcellular Localization**

Secreted.

**Protein Name**

Granulocyte-macrophage colony-stimulating factor(GM-CSF)

**Contents**

Each vial contains 5mg BSA, 0.9mg NaCl, 0.2mg Na<sub>2</sub>HPO<sub>4</sub>, 0.05mg Thimerosal, 0.05mg NaN<sub>3</sub>.

**Immunogen**

A synthetic peptide corresponding to a sequence in the middle region of human GM-CSF(63-81aa MFDLQEPTCLQTRLELYKQ).

**Purification**

Immunogen affinity purified.

**Cross Reactivity**

No cross reactivity with other proteins

Storage

**At -20°C for one year. After reconstitution, at 4°C for one month. It can also be aliquotted and stored frozen at -20°C for a longer time. Avoid repeated freezing and thawing.**

**Sequence Similarities**

Belongs to the GM-CSF family.

**Anti-GM-CSF Antibody - Protein Information**

**Name** CSF2

**Synonyms** GMCSF

**Function**

Cytokine that stimulates the growth and differentiation of hematopoietic precursor cells from various lineages, including granulocytes, macrophages, eosinophils and erythrocytes.

**Cellular Location**

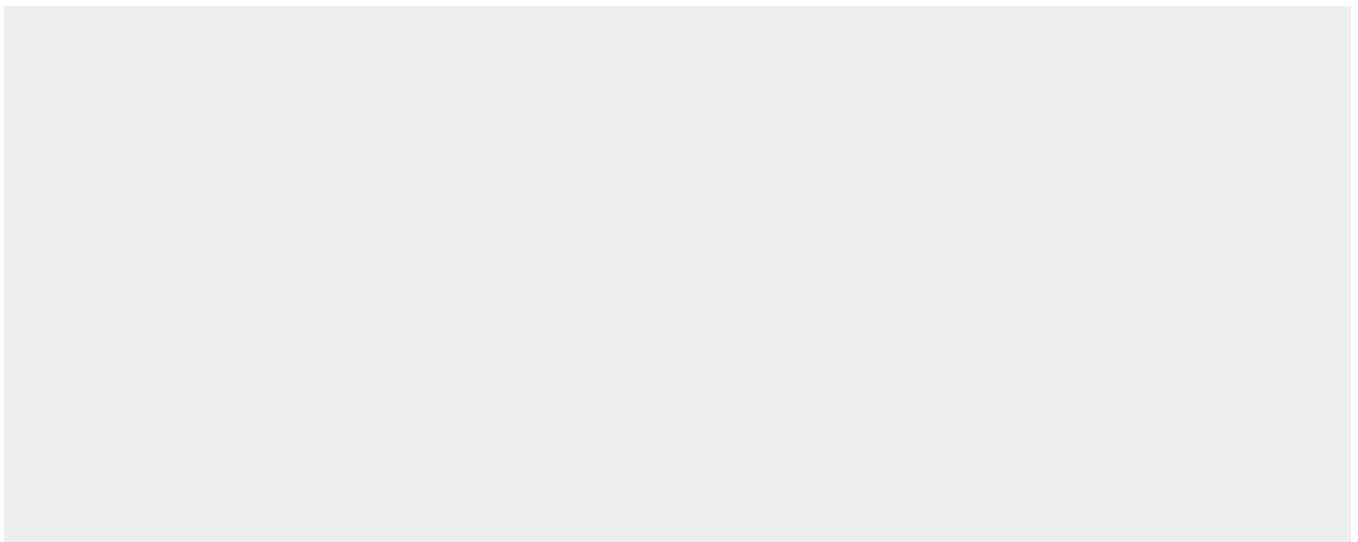
Secreted

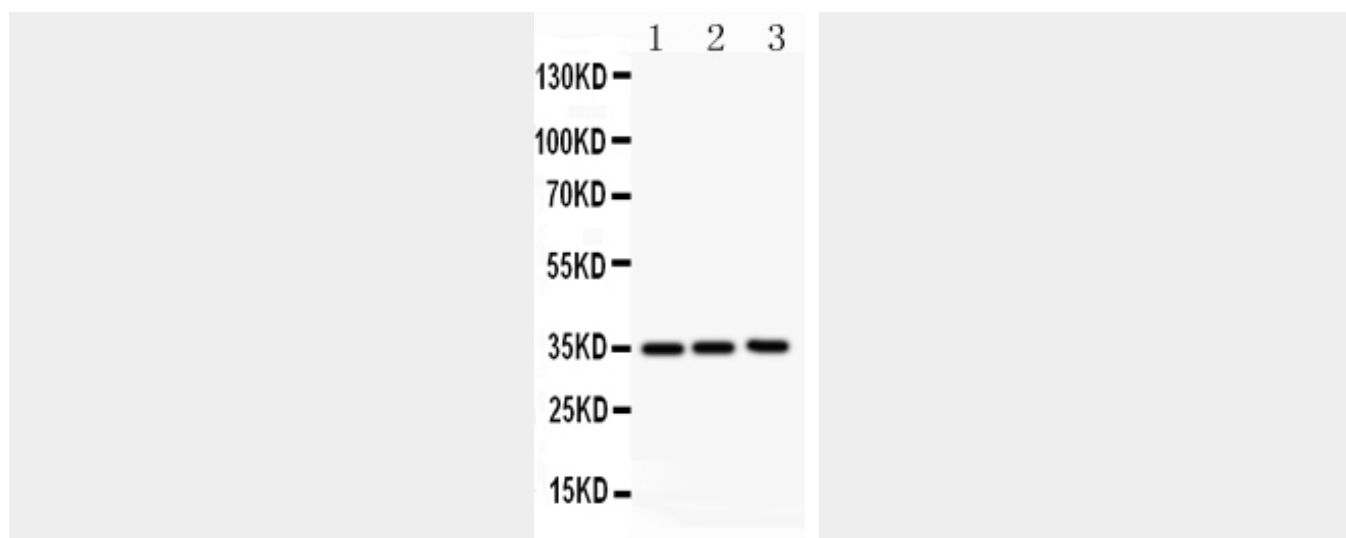
**Anti-GM-CSF Antibody - Protocols**

Provided below are standard protocols that you may find useful for product applications.

- [Western Blot](#)
- [Blocking Peptides](#)
- [Dot Blot](#)
- [Immunohistochemistry](#)
- [Immunofluorescence](#)
- [Immunoprecipitation](#)
- [Flow Cytometry](#)
- [Cell Culture](#)

**Anti-GM-CSF Antibody - Images**





Anti- GM-CSF antibody, ABO10776, Western blotting All lanes: Anti GM-CSF (ABO10776) at 0.5ug/ml  
Lane 1: JURKAT Whole Cell Lysate at 40ug  
Lane 2: HELA Whole Cell Lysate at 40ug  
Lane 3: HT1080 Whole Cell Lysate at 40ug  
Predicted bind size: 16KD  
Observed bind size: 35KD

#### **Anti-GM-CSF Antibody - Background**

GM-CSF, Granulocyte-macrophage colony-stimulating factor, is a protein secreted by macrophages, T cells, mast cells, endothelial cells, and fibroblasts. By fluorescence in situ hybridization, the GM-CSF gene is mapped to 5q31.1. GM-CSF is a cytokine that functions as a white blood cell growth factor. GM-CSF stimulates stem cells to produce granulocytes (neutrophils, eosinophils, and basophils) and monocytes. GM-CSF is an essential regulator of neutrophil function.