

Anti-SFTPA1 Antibody
Catalog # ABO10777**Specification**

Anti-SFTPA1 Antibody - Product Information

Application	WB, IHC-P
Primary Accession	P35242
Host	Rabbit
Reactivity	Mouse, Rat
Clonality	Polyclonal
Format	Lyophilized

Description

Rabbit IgG polyclonal antibody for Pulmonary surfactant-associated protein A(SFTPA1) detection.
Tested with WB, IHC-P in Mouse;Rat.

Reconstitution

Add 0.2ml of distilled water will yield a concentration of 500ug/ml.

Anti-SFTPA1 Antibody - Additional Information**Other Names**

Pulmonary surfactant-associated protein A, PSAP, PSP-A, SP-A, Sftpa1, Sftp-1, Sftp1, Sftpa

Calculated MW

26157 MW KDa

Application Details

Immunohistochemistry(Paraffin-embedded Section), 0.5-1 µg/ml, Rat, Mouse, By Heat

Western blot, 0.1-0.5 µg/ml, Mouse, Rat

Subcellular Localization

Secreted, extracellular space, extracellular matrix. Secreted, extracellular space, surface film.

Protein Name

Pulmonary surfactant-associated protein A

Contents

Each vial contains 5mg BSA, 0.9mg NaCl, 0.2mg Na₂HPO₄, 0.05mg Thimerosal, 0.05mg NaN₃.

Immunogen

A synthetic peptide corresponding to a sequence at the C-terminus of mouse SFTPA1 (233-248aa WNDKGCLQYRLAICEF), identical to the related rat sequence.

Purification

Immunogen affinity purified.

Cross Reactivity

No cross reactivity with other proteins

Storage

At -20°C for one year. After reconstitution, at 4°C for one month. It can also be aliquotted and stored frozen at -20°C for a longer time. Avoid repeated freezing and thawing.

Sequence Similarities

Belongs to the SFTPA family.

Anti-SFTPA1 Antibody - Protein Information

Name Sftpa1

Synonyms Sftp-1, Sftp1, Sftpa

Function

In presence of calcium ions, it binds to surfactant phospholipids and contributes to lower the surface tension at the air- liquid interface in the alveoli of the mammalian lung and is essential for normal respiration. Enhances the expression of MYO18A/SP-R210 on alveolar macrophages (PubMed: [25965346](http://www.uniprot.org/citations/25965346)).

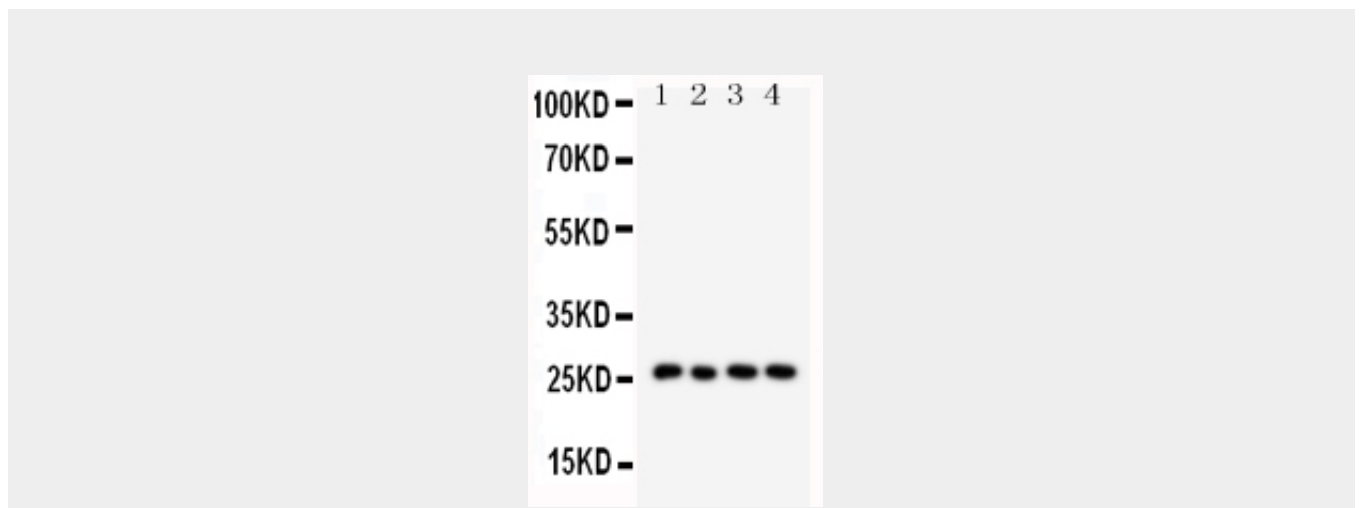
Cellular Location

Secreted. Secreted, extracellular space, extracellular matrix. Secreted, extracellular space, surface film

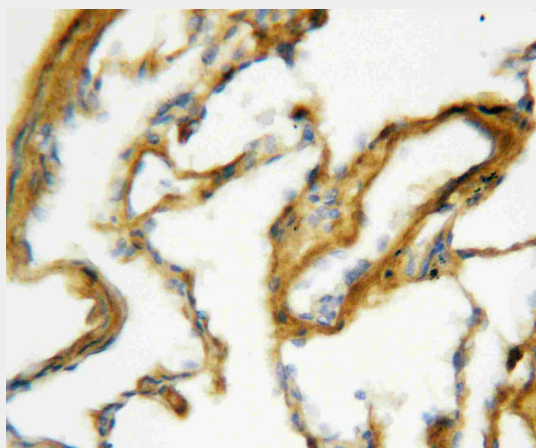
Anti-SFTPA1 Antibody - Protocols

Provided below are standard protocols that you may find useful for product applications.

- [Western Blot](#)
- [Blocking Peptides](#)
- [Dot Blot](#)
- [Immunohistochemistry](#)
- [Immunofluorescence](#)
- [Immunoprecipitation](#)
- [Flow Cytometry](#)
- [Cell Culture](#)

Anti-SFTPA1 Antibody - Images

Anti-SFTP A1 antibody, ABO10777, Western blotting
Lane 1: Mouse Lung Tissue Lysate
Lane 2: Mouse Lung Tissue Lysate
Lane 3: Rat Lung Tissue Lysate
Lane 4: Rat Lung Tissue Lysate



Anti-SFTP A1 antibody, ABO10777, IHC(P)IHC(P): Rat Lung Tissue

Anti-SFTP A1 Antibody - Background

Surfactant protein A is an innate immune system collectin. The gene encoding SP-A map to mouse chromosome 14. Surfactant protein-A, which plays a role in innate host defense in the lung, is also expressed in the Eustachian tube. We report that the frequency of specific surfactant protein-A haplotypes and genotypes differs between children with recurrent otitis media compared with a control population.