

**Anti-CXCL16 Antibody**  
**Catalog # ABO10779****Specification**

---

**Anti-CXCL16 Antibody - Product Information**

Application	WB, IHC-P
Primary Accession	<a href="#">Q8BSU2</a>
Host	Rabbit
Reactivity	Mouse
Clonality	Polyclonal
Format	Lyophilized

**Description**

Rabbit IgG polyclonal antibody for C-X-C motif chemokine 16(CXCL16) detection. Tested with WB, IHC-P in Mouse.

**Reconstitution**

Add 0.2ml of distilled water will yield a concentration of 500ug/ml.

**Anti-CXCL16 Antibody - Additional Information**

**Gene ID** 66102

**Other Names**

C-X-C motif chemokine 16, Scavenger receptor for phosphatidylserine and oxidized low density lipoprotein, SR-PSOX, Small-inducible cytokine B16, Transmembrane chemokine CXCL16, Cxcl16, Srpsox

**Calculated MW**

26896 MW KDa

**Application Details**

Immunohistochemistry(Paraffin-embedded Section), 0.5-1 µg/ml, Mouse, By Heat<br><br>Western blot, 0.1-0.5 µg/ml, Mouse<br>

**Subcellular Localization**

Membrane ; Single-pass type I membrane protein .

**Tissue Specificity**

Widely expressed. Not detected in purified B- and T-cells. .

**Protein Name**

C-X-C motif chemokine 16

**Contents**

Each vial contains 5mg BSA, 0.9mg NaCl, 0.2mg Na<sub>2</sub>HPO<sub>4</sub>, 0.05mg Thimerosal, 0.05mg NaN<sub>3</sub>.

**Immunogen**

A synthetic peptide corresponding to a sequence in the middle region of mouse CXCL16(103-116aa HGKSFHHQKHLPQA).

**Purification**

Immunogen affinity purified.

**Cross Reactivity**

No cross reactivity with other proteins

**Storage**

**At -20°C for one year. After reconstitution, at 4°C for one month. It can also be aliquotted and stored frozen at -20°C for a longer time. Avoid repeated freezing and thawing.**

**Anti-CXCL16 Antibody - Protein Information**

**Name** Cxcl16

**Synonyms** Srpsox

**Function**

Induces a strong chemotactic response. Induces calcium mobilization. Binds to CXCR6/Bonzo. Also acts as a scavenger receptor on macrophages, which specifically binds to OxLDL (oxidized low density lipoprotein), suggesting that it may be involved in pathophysiology such as atherogenesis.

**Cellular Location**

Membrane; Single-pass type I membrane protein

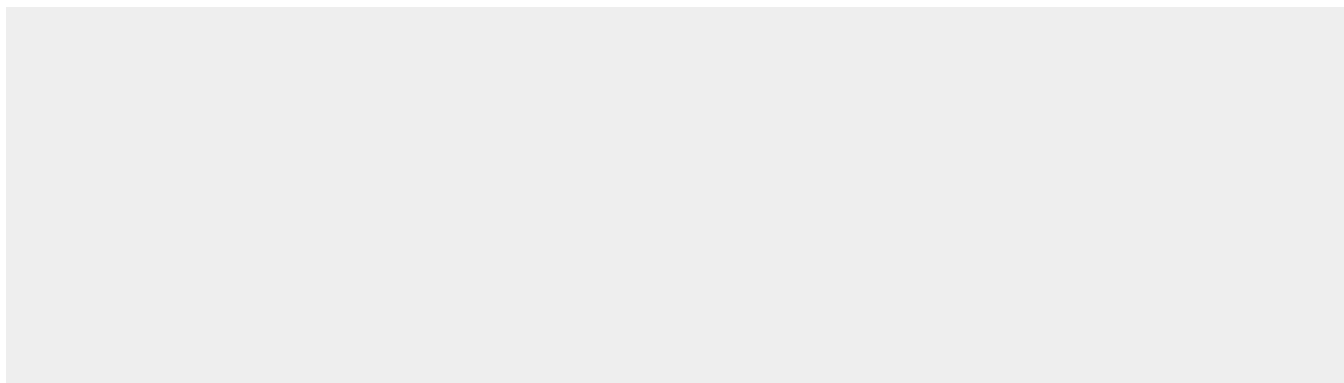
**Tissue Location**

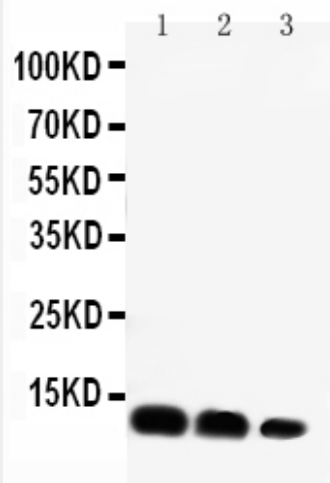
Widely expressed. Not detected in purified B- and T-cells.

**Anti-CXCL16 Antibody - Protocols**

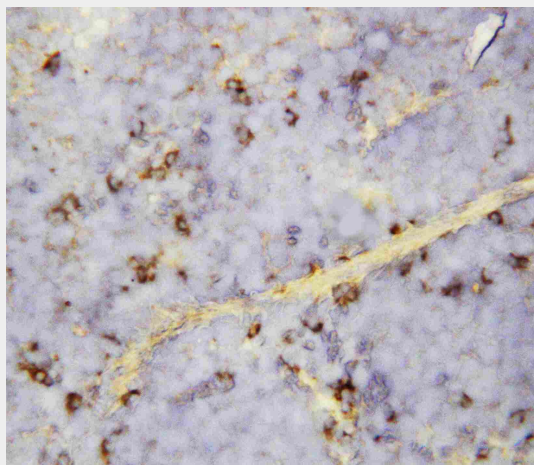
Provided below are standard protocols that you may find useful for product applications.

- [Western Blot](#)
- [Blocking Peptides](#)
- [Dot Blot](#)
- [Immunohistochemistry](#)
- [Immunofluorescence](#)
- [Immunoprecipitation](#)
- [Flow Cytometry](#)
- [Cell Culture](#)

**Anti-CXCL16 Antibody - Images**



Anti-CXCL16 antibody, ABO10779, Western blotting  
Lane 1: Recombinant Mouse CXCL16 Protein 10ng  
Lane 2: Recombinant Mouse CXCL16 Protein 5ng  
Lane 3: Recombinant Mouse CXCL16 Protein 2.5ng



Anti-CXCL16 antibody, ABO10779, IHC(P)IHC(P): Mouse Spleen Tissue

#### Anti-CXCL16 Antibody - Background

CXCL16, Chemokine(C-X-C motif) ligand 16, is a small cytokine belonging to the CXC chemokine family. Larger than other chemokines(with 254 amino acids ), CXCL16 is composed of a CXC chemokine domain, a mucin-like stalk, a transmembrane domain and a cytoplasmic tail containing a potential tyrosine phosphorylation site that may bind SH2. By somatic cell hybrid analysis, the CXCL16 gene is mapped to 17p13, a locus separate from all other known chemokines. Chemotaxis assays found that CXCL16 induced a strong chemotactic response in activated CD8 T cells. In addition, CXCL16 induced calcium mobilization.