

Anti-IL-7 Antibody
Catalog # ABO10786**Specification**

Anti-IL-7 Antibody - Product Information

Application	WB, IHC-P
Primary Accession	P10168
Host	Rabbit
Reactivity	Mouse
Clonality	Polyclonal
Format	Lyophilized

Description

Rabbit IgG polyclonal antibody for Interleukin-7(IL7) detection. Tested with WB, IHC-P in Mouse.

Reconstitution

Add 0.2ml of distilled water will yield a concentration of 500ug/ml.

Anti-IL-7 Antibody - Additional Information

Gene ID 16196

Other Names

Interleukin-7, IL-7, IL7, IL-7

Calculated MW

17727 MW KDa

Application Details

Immunohistochemistry(Paraffin-embedded Section), 0.5-1 µg/ml, Mouse, By Heat
Western blot, 0.1-0.5 µg/ml, Mouse

Subcellular Localization

Secreted.

Protein Name

Interleukin-7(IL-7)

Contents

Each vial contains 5mg BSA, 0.9mg NaCl, 0.2mg Na₂HPO₄, 0.05mg Thimerosal, 0.05mg NaN₃.

Immunogen

A synthetic peptide corresponding to a sequence at the N-terminus of mouse IL7(26-42aa ECHIKDKEGKAYESVLM).

Purification

Immunogen affinity purified.

Cross Reactivity

No cross reactivity with other proteins

Storage

At -20°C for one year. After reconstitution, at 4°C for one month. It can also be aliquotted and stored frozen at -20°C for a longer time. Avoid repeated freezing and thawing.

Anti-IL-7 Antibody - Protein Information**Name** IL7**Synonyms** IL-7**Function**

Hematopoietic cytokine that plays an essential role in the development, expansion, and survival of naive and memory T-cells and B- cells thereby regulating the number of mature lymphocytes and maintaining lymphoid homeostasis (PubMed: [28811625](http://www.uniprot.org/citations/28811625), PubMed: [7699333](http://www.uniprot.org/citations/7699333)). Mechanistically, exerts its biological effects through a receptor composed of IL7RA subunit and the cytokine receptor common subunit gamma/CSF2RG. Binding to the receptor leads to activation of various kinases including JAK1 or JAK3 depending on the cell type and subsequently propagation of signals through activation of several downstream signaling pathways including the PI3K/Akt/mTOR or the JAK- STAT5.

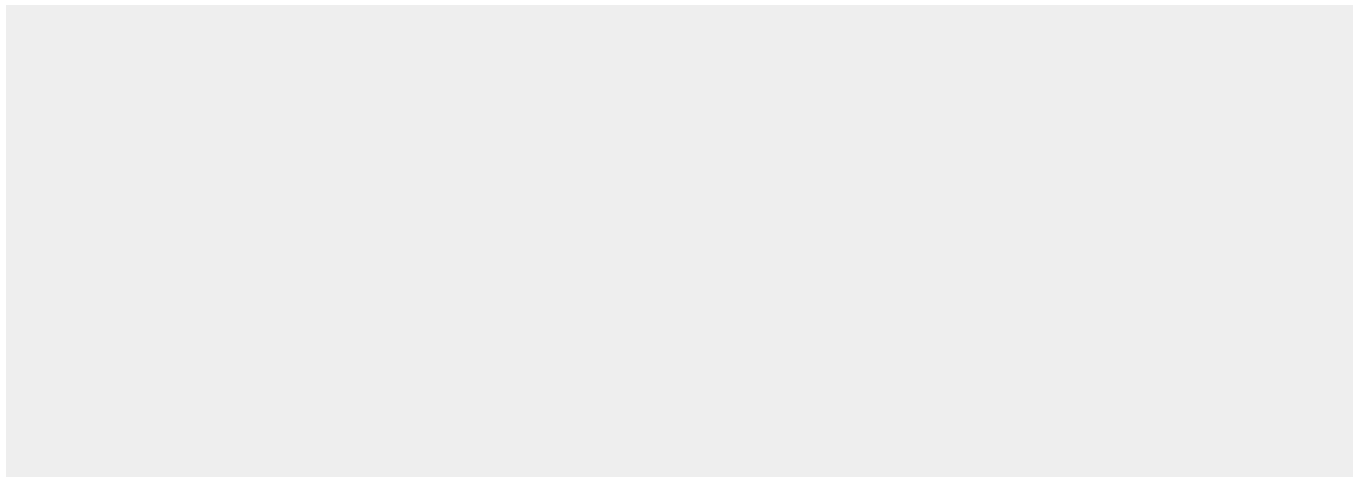
Cellular Location

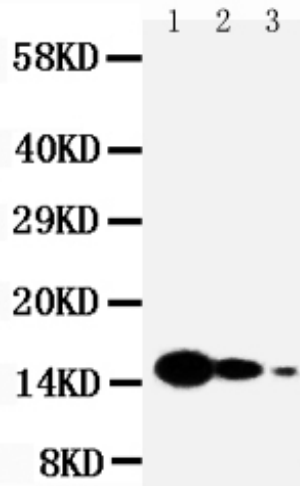
Secreted {ECO:0000250|UniProtKB:P13232}.

Anti-IL-7 Antibody - Protocols

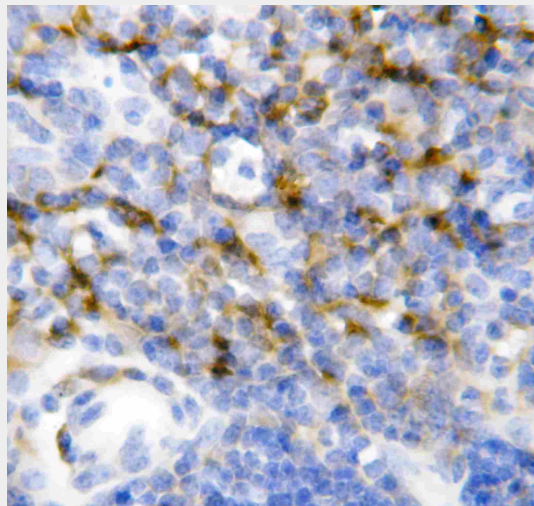
Provided below are standard protocols that you may find useful for product applications.

- [Western Blot](#)
- [Blocking Peptides](#)
- [Dot Blot](#)
- [Immunohistochemistry](#)
- [Immunofluorescence](#)
- [Immunoprecipitation](#)
- [Flow Cytometry](#)
- [Cell Culture](#)

Anti-IL-7 Antibody - Images



Anti-IL7 antibody, ABO10786, Western blotting Lane 1: Recombinant Mouse IL-7 Protein 10ng Lane 2: Recombinant Mouse IL-7 Protein 5ng Lane 3: Recombinant Mouse IL-7 Protein 2.5ng



Anti-IL7 antibody, ABO10786, IHC(P) IHC(P): Mouse Spleen Tissue

Anti-IL-7 Antibody - Background

IL-7, Interleukin 7, is a protein that in humans is encoded by the IL-7 gene. IL-7 a hematopoietic growth factor secreted by stromal cells in the red marrow and thymus. It is also produced by keratinocytes, dendritic cells, hepatocytes, neurons, and epithelial cells but is not produced by lymphocytes. By the combination of approaches, IL-7 is located on 8q12-q13. IL-7 is critical for early T-cell development and homeostasis of naive and memory CD8-positive T cells. It signals through the IL-7 receptor complex, which consists of the IL7R-alpha chain and the common IL2R-gamma chain is critical for early T-cell development and homeostasis of naive and memory CD8 -positive T cells. It signals through the IL-7 receptor complex, which consists of the IL7R-alpha chain and the common IL2R-gamma chain.