

**Anti-PPID Antibody**  
**Catalog # ABO10791****Specification**

---

**Anti-PPID Antibody - Product Information**

Application	WB, IHC-P
Primary Accession	<a href="#">Q08752</a>
Host	Rabbit
Reactivity	Human, Mouse, Rat
Clonality	Polyclonal
Format	Lyophilized

**Description**

Rabbit IgG polyclonal antibody for Peptidyl-prolyl cis-trans isomerase D(PPID) detection. Tested with WB, IHC-P in Human;Mouse;Rat.

**Reconstitution**

Add 0.2ml of distilled water will yield a concentration of 500ug/ml.

**Anti-PPID Antibody - Additional Information**

**Gene ID** 5481

**Other Names**

Peptidyl-prolyl cis-trans isomerase D, PPIase D, 5.2.1.8, 40 kDa peptidyl-prolyl cis-trans isomerase, Cyclophilin-40, CYP-40, Cyclophilin-related protein, Rotamase D, PPID, CYP40, CYPD

**Calculated MW**

40764 MW KDa

**Application Details**

Immunohistochemistry(Paraffin-embedded Section), 0.5-1 µg/ml, Human, Rat, Mouse, By Heat<br>Western blot, 0.1-0.5 µg/ml, Human, Rat, Mouse<br>

**Subcellular Localization**

Cytoplasm. Nucleus, nucleolus. Nucleus, nucleoplasm.

**Tissue Specificity**

Widely expressed.

**Protein Name**

Peptidyl-prolyl cis-trans isomerase D(PPIase D)

**Contents**

Each vial contains 5mg BSA, 0.9mg NaCl, 0.2mg Na<sub>2</sub>HPO<sub>4</sub>, 0.05mg Thimerosal, 0.05mg NaN<sub>3</sub>.

**Immunogen**

A synthetic peptide corresponding to a sequence at the C-terminus of human PPID(351-370aa KQKIAQKDKEKAVYAKMFA), different from the related mouse and rat sequence by one amino acid.

**Purification**

Immunogen affinity purified.

**Cross Reactivity**

No cross reactivity with other proteins

**Storage**

**At -20°C for one year. After reconstitution, at 4°C for one month. It can also be aliquotted and stored frozen at -20°C for a longer time. Avoid repeated freezing and thawing.**

**Sequence Similarities**

Belongs to the cyclophilin-type PPlase family. PPlase D subfamily.

**Anti-PPID Antibody - Protein Information**

**Name** PPID ([HGNC:9257](#))

**Synonyms** CYP40, CYPD

**Function**

PPlase that catalyzes the cis-trans isomerization of proline imidic peptide bonds in oligopeptides and may therefore assist protein folding (PubMed: [11350175](http://www.uniprot.org/citations/11350175), PubMed: [20676357](http://www.uniprot.org/citations/20676357)). Proposed to act as a co-chaperone in HSP90 complexes such as in unligated steroid receptors heterocomplexes. Different co-chaperones seem to compete for association with HSP90 thus establishing distinct HSP90-co-chaperone-receptor complexes with the potential to exert tissue-specific receptor activity control. May have a preference for estrogen receptor complexes and is not found in glucocorticoid receptor complexes. May be involved in cytoplasmic dynein-dependent movement of the receptor from the cytoplasm to the nucleus. May regulate MYB by inhibiting its DNA-binding activity. Involved in regulation of AHR signaling by promoting the formation of the AHR:ARNT dimer; the function is independent of HSP90 but requires the chaperone activity. Involved in regulation of UV radiation-induced apoptosis. Promotes cell viability in anaplastic lymphoma kinase-positive anaplastic large-cell lymphoma (ALK+ ALCL) cell lines.

**Cellular Location**

Cytoplasm. Nucleus, nucleolus. Nucleus, nucleoplasm

**Tissue Location**

Widely expressed.

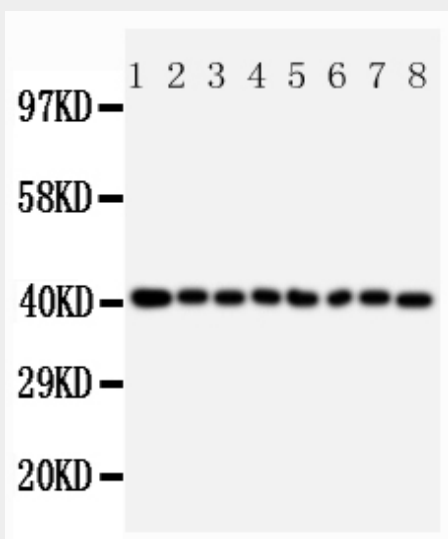
**Anti-PPID Antibody - Protocols**

Provided below are standard protocols that you may find useful for product applications.

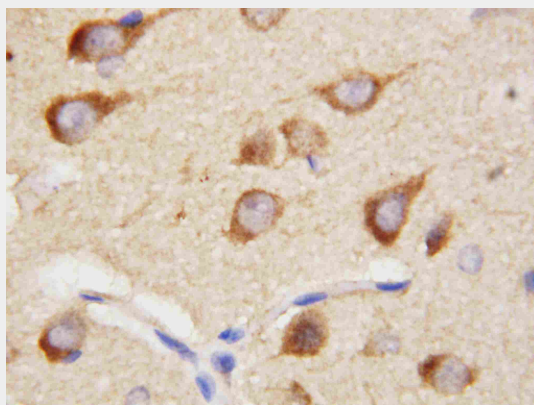
- [Western Blot](#)
- [Blocking Peptides](#)
- [Dot Blot](#)
- [Immunohistochemistry](#)
- [Immunofluorescence](#)
- [Immunoprecipitation](#)
- [Flow Cytometry](#)

• [Cell Culture](#)

**Anti-PPID Antibody - Images**



Anti-PPID antibody, ABO10791, Western blotting  
Lane 1: Rat Brain Tissue Lysate  
Lane 2: Rat Pancreas Tissue Lysate  
Lane 3: Rat Liver Tissue Lysate  
Lane 4: JURKAT Cell Lysate  
Lane 5: RAJI Cell Lysate  
Lane 6: CEM Cell Lysate  
Lane 7: HL-60 Cell Lysate  
Lane 8: HT1080 Cell Lysate



Anti-PPID antibody, ABO10791, IHC(P)IHC(P): Rat Brain Tissue

**Anti-PPID Antibody - Background**

Cyclophilin D, Peptidylprolyl isomerase D, also known as PPID, is an enzyme which in humans is encoded by the PPID gene. The protein encoded by this gene is a member of the peptidyl-prolyl cis-trans isomerase(PPIase) family. The Cyclophilin D(PPID) gene contains 10 exons and spans 14.2 kb of genomic DNA. By fluorescence in situ hybridization, the PPID gene is mapped to chromosome 4q31.3. PPIases catalyze the cis-trans isomerization of proline imidic peptide bonds in oligopeptides and accelerate the folding of proteins. This protein has been shown to possess PPIase activity and, similar to other family members, can bind to the immunosuppressant ciclosporin.