

**Anti-Resistin Antibody**  
**Catalog # ABO10792****Specification**

---

**Anti-Resistin Antibody - Product Information**

Application	WB
Primary Accession	<a href="#">Q99P87</a>
Host	Rabbit
Reactivity	Mouse
Clonality	Polyclonal
Format	Lyophilized

**Description**

Rabbit IgG polyclonal antibody for Resistin(RETN) detection. Tested with WB, IHC-P in Mouse.

**Reconstitution**

Add 0.2ml of distilled water will yield a concentration of 500ug/ml.

**Anti-Resistin Antibody - Additional Information**

**Gene ID** 57264

**Other Names**

Resistin, Adipose tissue-specific secretory factor, ADSF, Adipose-specific cysteine-rich secreted protein A12-alpha, Cysteine-rich secreted protein FIZZ3, Retn, Fizz3

**Calculated MW**

12492 MW KDa

**Application Details**

Immunohistochemistry(Paraffin-embedded Section), 0.5-1 µg/ml, Mouse, By Heat<br>Western blot, 0.1-0.5 µg/ml, Mouse<br>

**Subcellular Localization**

Secreted.

**Tissue Specificity**

Expressed in white but not brown adipose tissue in a variety of organs.

**Protein Name**

Resistin

**Contents**

Each vial contains 5mg BSA, 0.9mg NaCl, 0.2mg Na<sub>2</sub>HPO<sub>4</sub>, 0.05mg Thimerosal, 0.05mg NaN<sub>3</sub>.

**Immunogen**

A synthetic peptide corresponding to a sequence at the C-terminus of mouse Resistin(93-114aa CHCQCARIDWTAARCKLQVAS).

**Purification**

Immunogen affinity purified.

**Cross Reactivity**

No cross reactivity with other proteins

Storage

**At -20°C for one year. After reconstitution, at 4°C for one month. It can also be aliquotted and stored frozen at -20°C for a longer time. Avoid repeated freezing and thawing.**

**Anti-Resistin Antibody - Protein Information**

**Name** Retn

**Synonyms** Fizz3

**Function**

Hormone that seems to suppress insulin ability to stimulate glucose uptake into adipose cells. Potentially links obesity to diabetes.

**Cellular Location**

Secreted.

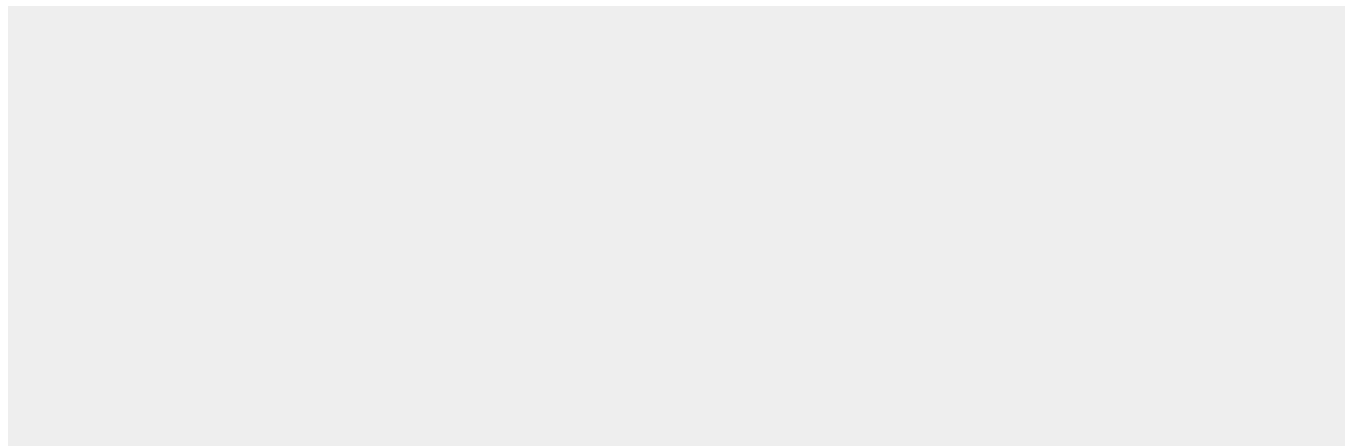
**Tissue Location**

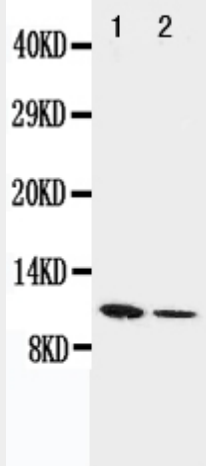
Expressed in white but not brown adipose tissue in a variety of organs.

**Anti-Resistin Antibody - Protocols**

Provided below are standard protocols that you may find useful for product applications.

- [Western Blot](#)
- [Blocking Peptides](#)
- [Dot Blot](#)
- [Immunohistochemistry](#)
- [Immunofluorescence](#)
- [Immunoprecipitation](#)
- [Flow Cytometry](#)
- [Cell Culture](#)

**Anti-Resistin Antibody - Images**



Anti-Resistin antibody, ABO10792, Western blotting Lane 1: Recombinant Mouse Resistin Protein 10ng Lane 2: Recombinant Mouse Resistin Protein 5ng

#### **Anti-Resistin Antibody - Background**

Resistin, also known as adipose tissue-specific secretory factor(ADSF) or C/EBP-epsilon-regulated myeloid-specific secreted cysteine-rich protein(XCP1) is a cysteine-rich protein that in humans is encoded by the RETN gene. The resistin gene comprises 4 exons, the first of which is untranslated, and spans approximately 1,750 bp. The human resistin gene is localized to a cloned fragment of human chromosome 19. In primates, pigs and dogs, resistin is secreted by immune and epithelial cells while in rodents, it is secreted by adipose tissue. Resistin is a cytokine whose physiologic role has been the subject of much controversy regarding its involvement with obesity and type II diabetes mellitus.