

Anti-IGFBP-1 Antibody
Catalog # ABO10799**Specification**

Anti-IGFBP-1 Antibody - Product Information

Application	WB
Primary Accession	P08833
Host	Rabbit
Reactivity	Human
Clonality	Polyclonal
Format	Lyophilized

Description

Rabbit IgG polyclonal antibody for Insulin-like growth factor-binding protein 1(IGFBP1) detection. Tested with WB in Human.

Reconstitution

Add 0.2ml of distilled water will yield a concentration of 500ug/ml.

Anti-IGFBP-1 Antibody - Additional Information

Gene ID 3484

Other Names

Insulin-like growth factor-binding protein 1, IBP-1, IGF-binding protein 1, IGFBP-1, Placental protein 12, PP12, IGFBP1, IBP1

Calculated MW

27904 MW KDa

Application Details

Western blot, 0.1-0.5 µg/ml, Human

Subcellular Localization

Secreted.

Protein Name

Insulin-like growth factor-binding protein 1(IBP-1/IGF-binding protein 1/IGFBP-1)

Contents

Each vial contains 5mg BSA, 0.9mg NaCl, 0.2mg Na₂HPO₄, 0.05mg Thimerosal, 0.05mg NaN₃.

Immunogen

A synthetic peptide corresponding to a sequence in the middle region of human IGFBP-1(170-190aa KEPCRIELYRVVESLAKAQET).

Purification

Immunogen affinity purified.

Cross Reactivity

No cross reactivity with other proteins

Storage

At -20°C for one year. After reconstitution, at 4°C for one month. It can also be aliquotted and stored frozen at -20°C for a longer time. Avoid repeated freezing and thawing.

Sequence Similarities

Contains 1 IGFBP N-terminal domain.

Anti-IGFBP-1 Antibody - Protein Information

Name IGFBP1

Synonyms IBP1

Function

Multifunctional protein that plays a critical role in regulating the availability of IGFs such as IGF1 and IGF2 to their receptors and thereby regulates IGF-mediated cellular processes including cell migration, proliferation, differentiation or apoptosis in a cell-type specific manner (PubMed:11397844, PubMed:15972819). Also plays a positive role in cell migration by interacting with integrin ITGA5:ITGB1 through its RGD motif (PubMed:7504269). Mechanistically, binding to integrins leads to activation of focal adhesion kinase/PTK2 and stimulation of the mitogen-activated protein kinase (MAPK) pathway (PubMed:11397844). Regulates cardiomyocyte apoptosis by suppressing HIF-1α/HIF1A ubiquitination and subsequent degradation (By similarity).

Cellular Location

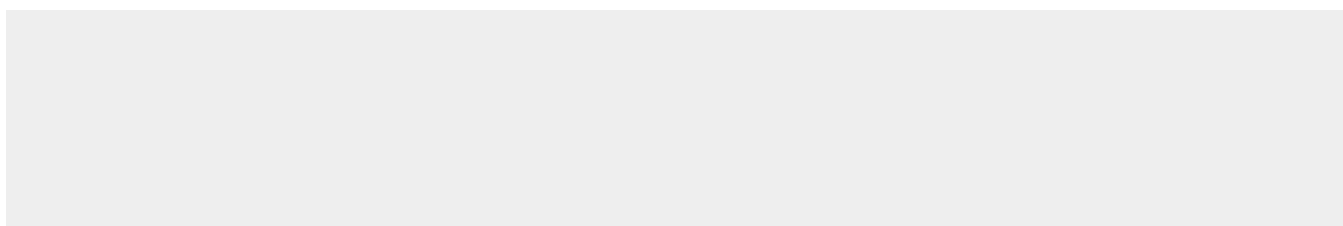
Secreted.

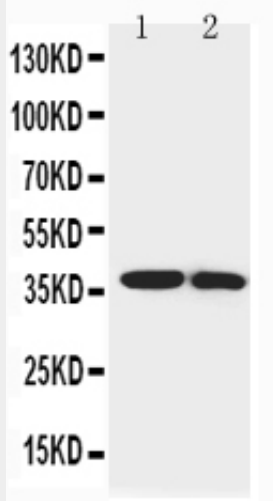
Anti-IGFBP-1 Antibody - Protocols

Provided below are standard protocols that you may find useful for product applications.

- [Western Blot](#)
- [Blocking Peptides](#)
- [Dot Blot](#)
- [Immunohistochemistry](#)
- [Immunofluorescence](#)
- [Immunoprecipitation](#)
- [Flow Cytometry](#)
- [Cell Culture](#)

Anti-IGFBP-1 Antibody - Images





Anti-IGFBP-1 antibody, ABO10799, Western blotting Lane 1: SMMC Cell Lysate Lane 2: MCF-7 Cell Lysate

Anti-IGFBP-1 Antibody - Background

IGFBP1, Insulin-like growth factor-binding protein 1, also known as placental protein 12 (PP12), is a protein that in humans is encoded by the IGFBP1 gene. The IGFBP1 gene has 4 exons and spans 5.9 kb. The IGFBP1 gene is localized to 7p13-p12 by in situ hybridization. This gene is a member of the Insulin-like growth factor-binding protein (IGFBP) family and encodes a protein with an IGFBP domain and a type-I thyroglobulin domain. The protein binds both insulin-like growth factors (IGFs) I and II and circulates in the plasma. Binding of this protein prolongs the half-life of the IGFs and alters their interaction with cell surface receptors. Alternate transcriptional splice variants, encoding different isoforms, have been characterized.