

Anti-ANGPTL1 Antibody
Catalog # ABO10806**Specification**

Anti-ANGPTL1 Antibody - Product Information

Application	WB
Primary Accession	O95841
Host	Rabbit
Reactivity	Human, Mouse, Rat
Clonality	Polyclonal
Format	Lyophilized

Description

Rabbit IgG polyclonal antibody for Angiopoietin-related protein 1(ANGPTL1) detection. Tested with WB in Human;Mouse;Rat.

Reconstitution

Add 0.2ml of distilled water will yield a concentration of 500ug/ml.

Anti-ANGPTL1 Antibody - Additional Information

Gene ID 9068

Other Names

Angiopoietin-related protein 1, Angiopoietin-3, ANG-3, Angiopoietin-like protein 1, ANGPTL1, ANG3, ANGPT3, ARP1

Calculated MW

56720 MW KDa

Application Details

Western blot, 0.1-0.5 µg/ml, Human, Rat, Mouse

Subcellular Localization

Secreted .

Tissue Specificity

Highly expressed in adrenal gland, placenta, thyroid gland, heart, skeletal muscle and small intestine. Weakly expressed in testis, ovary, colon, pancreas, kidney and stomach. .

Protein Name

Angiopoietin-related protein 1

Contents

Each vial contains 5mg BSA, 0.9mg NaCl, 0.2mg Na₂HPO₄, 0.05mg Thimerosal, 0.05mg NaN₃.

Immunogen

A synthetic peptide corresponding to a sequence at the C-terminus of human ANGPTL1(477-491aa SYSLRAVQMMIKPID), identical to the related rat and mouse sequences.

Purification

Immunogen affinity purified.

Cross Reactivity

No cross reactivity with other proteins

Storage

At -20°C for one year. After reconstitution, at 4°C for one month. It can also be aliquotted and stored frozen at -20°C for a longer time. Avoid repeated freezing and thawing.

Anti-ANGPTL1 Antibody - Protein Information

Name ANGPTL1

Synonyms ANG3, ANGPT3, ARP1

Cellular Location

Secreted.

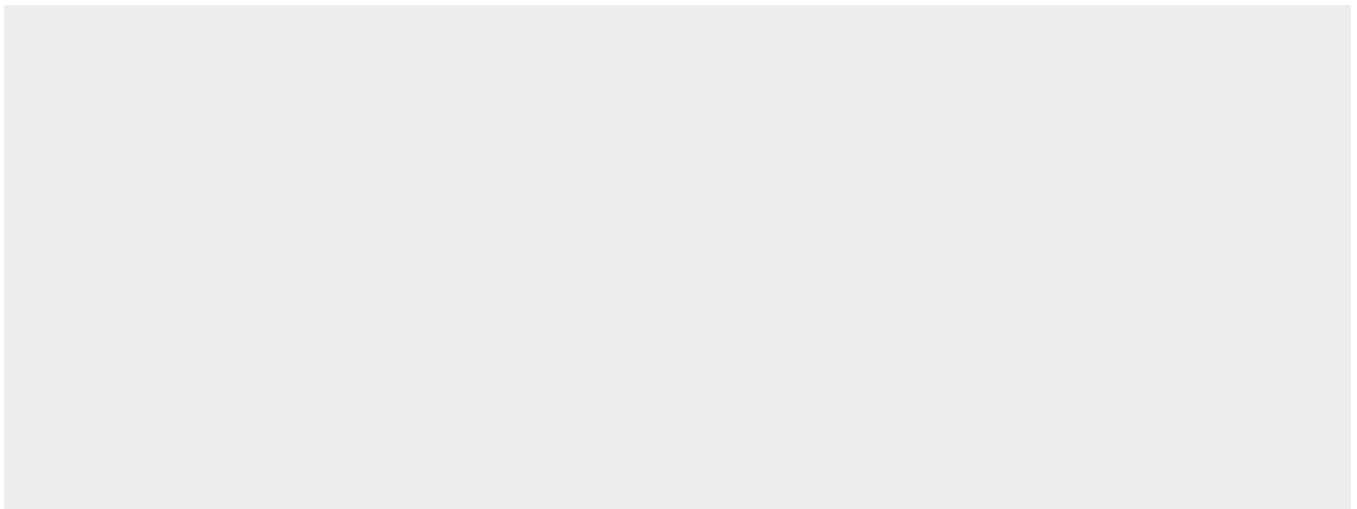
Tissue Location

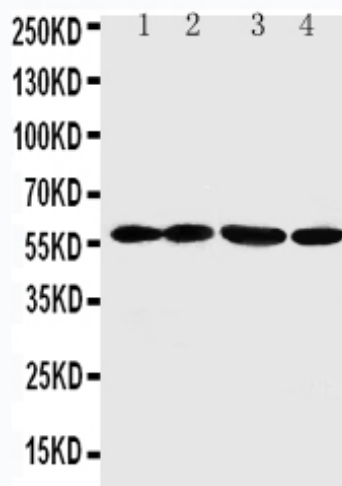
Highly expressed in adrenal gland, placenta, thyroid gland, heart, skeletal muscle and small intestine. Weakly expressed in testis, ovary, colon, pancreas, kidney and stomach

Anti-ANGPTL1 Antibody - Protocols

Provided below are standard protocols that you may find useful for product applications.

- [Western Blot](#)
- [Blocking Peptides](#)
- [Dot Blot](#)
- [Immunohistochemistry](#)
- [Immunofluorescence](#)
- [Immunoprecipitation](#)
- [Flow Cytometry](#)
- [Cell Culture](#)

Anti-ANGPTL1 Antibody - Images



Anti-ANGPTL1 antibody, ABO10806, Western blotting
Lane 1: A549 Cell Lysate
Lane 2: SW620 Cell Lysate
Lane 3: MCF-7 Cell Lysate
Lane 4: MM231 Cell Lysate

Anti-ANGPTL1 Antibody - Background

ANGPTL1, Angiopoietin-related protein 1, is a protein that in humans is encoded by the ANGPTL1 gene. Angiopoietins are members of the vascular endothelial growth factor family and the only known growth factors largely specific for vascular endothelium. Angiopoietin-1, angiopoietin-2, and angiopoietin-4 participate in the formation of blood vessels. The protein encoded by this gene is another member of the angiopoietin family that is widely expressed in adult tissues with mRNA levels highest in highly vascularized tissues. This protein was found to be a secretory protein that does not act as an endothelial cell mitogen in vitro. ANGPTL1 is widely expressed in human adult tissues as a major 3.0-kb transcript and a less abundant 4.0-kb transcript.