

Anti-MEKK2 Antibody
Catalog # ABO10818**Specification**

Anti-MEKK2 Antibody - Product Information

Application	WB
Primary Accession	Q9Y2U5
Host	Rabbit
Reactivity	Human, Mouse, Rat
Clonality	Polyclonal
Format	Lyophilized

Description

Rabbit IgG polyclonal antibody for Mitogen-activated protein kinase kinase kinase 2(MAP3K2) detection. Tested with WB in Human;Mouse;Rat.

Reconstitution

Add 0.2ml of distilled water will yield a concentration of 500ug/ml.

Anti-MEKK2 Antibody - Additional Information

Gene ID 10746

Other Names

Mitogen-activated protein kinase kinase kinase 2, 2.7.11.25, MAPK/ERK kinase kinase 2, MEK kinase 2, MEKK 2, MAP3K2, MAPKKK2, MEKK2

Calculated MW

69741 MW KDa

Application Details

Western blot, 0.1-0.5 µg/ml, Human, Rat, Mouse

Subcellular Localization

Cytoplasm . Nucleus . Upon EGF stimulation, translocates into the nucleus.

Protein Name

Mitogen-activated protein kinase kinase kinase 2

Contents

Each vial contains 5mg BSA, 0.9mg NaCl, 0.2mg Na₂HPO₄, 0.05mg Thimerosal, 0.05mg NaN₃.

Immunogen

A synthetic peptide corresponding to a sequence at the C-terminus of human MEKK2(606-619aa SADELLRHMFVHYH), different from the related rat and mouse sequences by one amino acid.

Purification

Immunogen affinity purified.

Cross Reactivity

No cross reactivity with other proteins

Storage

At -20°C for one year. After reconstitution, at 4°C for one month. It can also be aliquotted and stored frozen at -20°C for a longer time. Avoid repeated freezing and thawing.

Sequence Similarities

Belongs to the protein kinase superfamily. STE Ser/Thr protein kinase family. MAP kinase kinase kinase subfamily.

Anti-MEKK2 Antibody - Protein Information

Name MAP3K2

Synonyms MAPKKK2, MEKK2

Function

Component of a protein kinase signal transduction cascade. Regulates the JNK and ERK5 pathways by phosphorylating and activating MAP2K5 and MAP2K7 (By similarity). Plays a role in caveolae kiss-and-run dynamics.

Cellular Location

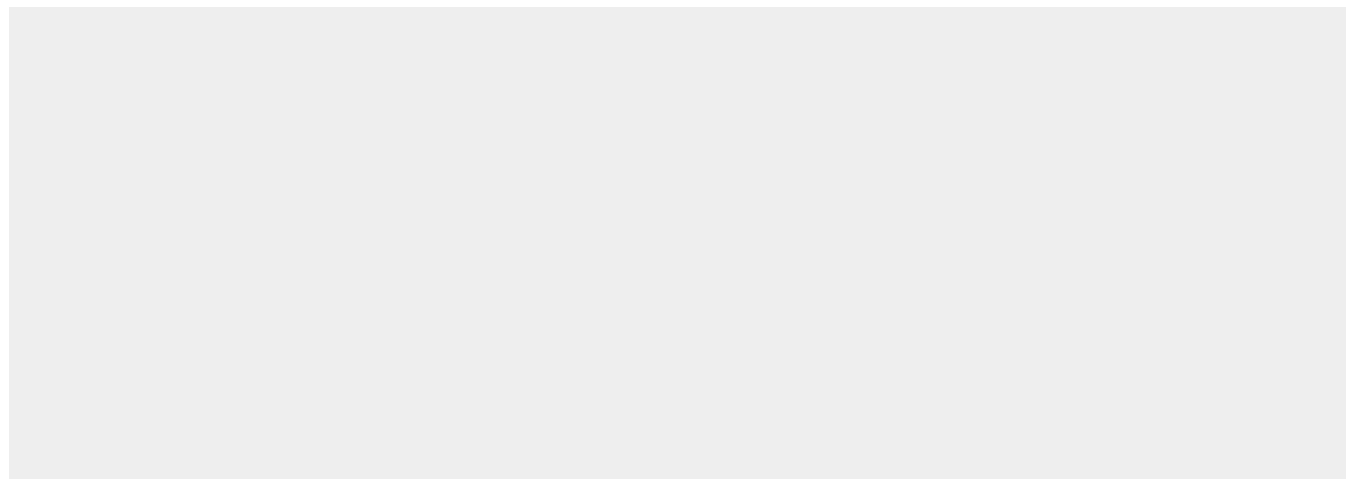
Cytoplasm. Nucleus. Note=Upon EGF stimulation, translocates into the nucleus

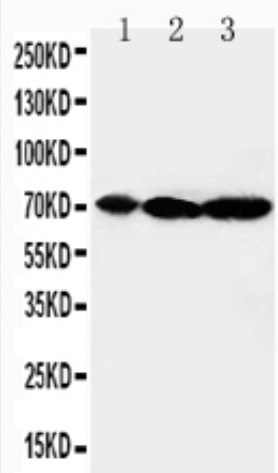
Anti-MEKK2 Antibody - Protocols

Provided below are standard protocols that you may find useful for product applications.

- [Western Blot](#)
- [Blocking Peptides](#)
- [Dot Blot](#)
- [Immunohistochemistry](#)
- [Immunofluorescence](#)
- [Immunoprecipitation](#)
- [Flow Cytometry](#)
- [Cell Culture](#)

Anti-MEKK2 Antibody - Images





Anti-MEKK2 antibody, ABO10818, Western blotting
Lane 1: Rat Brain Tissue Lysate
Lane 2: Rat Testis Tissue Lysate
Lane 3: Rat Lung Tissue Lysate

Anti-MEKK2 Antibody - Background

MAP3K2, mitogen-activated protein kinase kinase kinase 2, also known as MEKK2, belongs to the mitogen-activated protein kinase (MAPK) kinase kinase gene family, which is involved in regulating multiple MAPK signaling pathways. Endogenous MAP3K2 localized mainly to the cytosol of unstimulated HeLa cells and rat fibroblasts. The MAP3K2 gene is mapped to chromosome 2 by the International Radiation Hybrid Mapping Consortium. MAP3K2 is a major upstream activator of the JNK, MAPK cascade. MAP3K2 was identified as 1 of 6 kinases that regulate different steps of the caveolar cycle. Silencing of MAP3K2 strongly reduced kiss-and-run dynamics, leading to an accumulation of caveolar structures at the cell surface without affecting caveolae coat assembly or clustering.