

Anti-BCAT2 Antibody
Catalog # ABO10820**Specification**

Anti-BCAT2 Antibody - Product Information

| | |
|-------------------|------------------------|
| Application | WB, IHC-P |
| Primary Accession | O15382 |
| Host | Rabbit |
| Reactivity | Human |
| Clonality | Polyclonal |
| Format | Lyophilized |

Description

Rabbit IgG polyclonal antibody for Branched-chain-amino-acid aminotransferase, mitochondrial(BCAT2) detection. Tested with WB, IHC-P in Human.

Reconstitution

Add 0.2ml of distilled water will yield a concentration of 500ug/ml.

Anti-BCAT2 Antibody - Additional Information

Gene ID 587

Other Names

Branched-chain-amino-acid aminotransferase, mitochondrial, BCAT(m), 2.6.1.42, Placental protein 18, PP18, BCAT2, BCATM, BCT2, ECA40

Calculated MW

44288 MW KDa

Application Details

Immunohistochemistry(Paraffin-embedded Section), 0.5-1 µg/ml, Human, By Heat
Western blot, 0.1-0.5 µg/ml, Human

Subcellular Localization

Isoform A: Mitochondrion.

Tissue Specificity

Ubiquitous.

Protein Name

Branched-chain-amino-acid aminotransferase, mitochondrial(BCAT(m))

Contents

Each vial contains 5mg BSA, 0.9mg NaCl, 0.2mg Na₂HPO₄, 0.05mg Thimerosal, 0.05mg NaN₃.

Immunogen

A synthetic peptide corresponding to a sequence at the C-terminus of human BCAT2(377-392aa KEIQYGIRAHWMFPV).

Purification

Immunogen affinity purified.

Cross Reactivity

No cross reactivity with other proteins

Storage

At -20°C for one year. After reconstitution, at 4°C for one month. It can also be aliquotted and stored frozen at -20°C for a longer time. Avoid repeated freezing and thawing.

Sequence Similarities

Belongs to the class-IV pyridoxal-phosphate-dependent aminotransferase family.

Anti-BCAT2 Antibody - Protein Information**Name** BCAT2**Function**

Catalyzes the first reaction in the catabolism of the essential branched chain amino acids leucine, isoleucine, and valine (PubMed: [17050531](http://www.uniprot.org/citations/17050531), PubMed: [25653144](http://www.uniprot.org/citations/25653144), PubMed: [8702755](http://www.uniprot.org/citations/8702755)). May also function as a transporter of branched chain alpha-keto acids (By similarity).

Cellular Location

Mitochondrion {ECO:0000250|UniProtKB:O35854}.

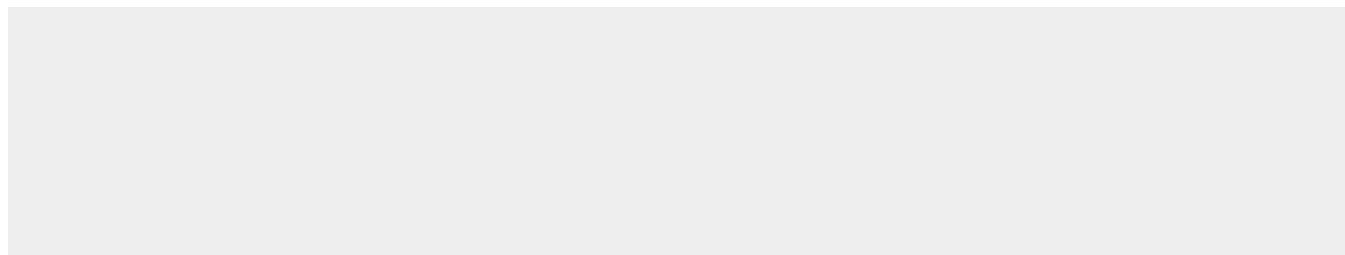
Tissue Location

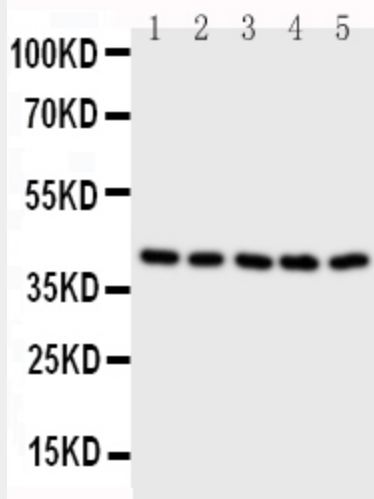
Ubiquitous..

Anti-BCAT2 Antibody - Protocols

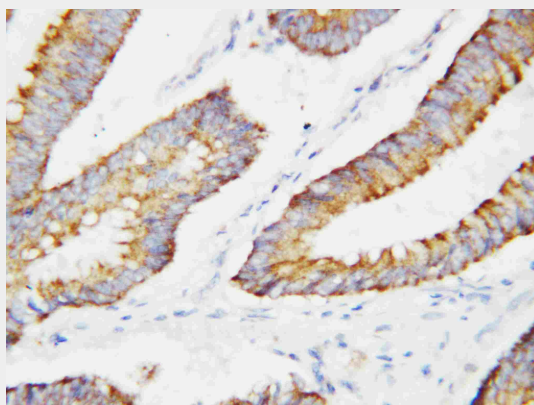
Provided below are standard protocols that you may find useful for product applications.

- [Western Blot](#)
- [Blocking Peptides](#)
- [Dot Blot](#)
- [Immunohistochemistry](#)
- [Immunofluorescence](#)
- [Immunoprecipitation](#)
- [Flow Cytometry](#)
- [Cell Culture](#)

Anti-BCAT2 Antibody - Images



Anti-BCAT2 antibody, ABO10820, Western blotting All lanes: Anti BCAT2 (ABO10820) at 0.5ug/ml
Lane 1: A431 Whole Cell Lysate at 40ug
Lane 2: SW620 Whole Cell Lysate at 40ug
Lane 3: SMMC Whole Cell Lysate at 40ug
Lane 4: JURKAT Whole Cell Lysate at 40ug
Lane 5: CEM Whole Cell Lysate at 40ug
Predicted bind size: 41KD
Observed bind size: 41KD



Anti-BCAT2 antibody, ABO10820, IHC(P)
IHC(P): Human Colon Cancer Tissue

Anti-BCAT2 Antibody - Background

BCAT2, branched-chain aminotransferase 2, encodes a branched chain aminotransferase found in mitochondria. The encoded protein forms a dimer that catalyzes the first step in the production of the branched chain amino acids leucine, isoleucine, and valine. Multiple transcript variants encoding different isoforms have been found for this gene. The human BCAT2 gene is mapped to 19q13.