

Anti-Ribonuclease A Antibody
Catalog # ABO10825**Specification**

Anti-Ribonuclease A Antibody - Product Information

Application	WB
Primary Accession	P07998
Host	Rabbit
Reactivity	Human
Clonality	Polyclonal
Format	Lyophilized

Description

Rabbit IgG polyclonal antibody for Ribonuclease pancreatic(RNASE1) detection. Tested with WB in Human.

Reconstitution

Add 0.2ml of distilled water will yield a concentration of 500ug/ml.

Anti-Ribonuclease A Antibody - Additional Information

Gene ID 6035

Other Names

Ribonuclease pancreatic, 3.1.27.5, HP-RNase, RIB-1, RNase Upl-1, Ribonuclease 1, RNase 1, Ribonuclease A, RNase A, RNASE1, RIB1, RNS1

Calculated MW

17644 MW KDa

Application Details

Western blot, 0.1-0.5 µg/ml, Human

Subcellular Localization

Secreted.

Tissue Specificity

Pancreas and other tissues and body fluids (indicating it may have other physiological functions besides its role in digestion).

Protein Name

Ribonuclease pancreatic

Contents

Each vial contains 5mg BSA, 0.9mg NaCl, 0.2mg Na₂HPO₄, 0.05mg Thimerosal, 0.05mg NaN₃.

Immunogen

A synthetic peptide corresponding to a sequence in the middle region of human Ribonuclease A(72-90aa NTFVHEPLVDVQNVCFQEK).

Purification

Immunogen affinity purified.

Cross Reactivity

No cross reactivity with other proteins

Storage

At -20°C for one year. After reconstitution, at 4°C for one month. It can also be aliquotted and stored frozen at -20°C for a longer time. Avoid repeated freezing and thawing.

Anti-Ribonuclease A Antibody - Protein Information

Name RNASE1

Synonyms RIB1, RNS1

Function

Endonuclease that catalyzes the cleavage of RNA on the 3' side of pyrimidine nucleotides. Acts on single-stranded and double-stranded RNA.

Cellular Location

Secreted.

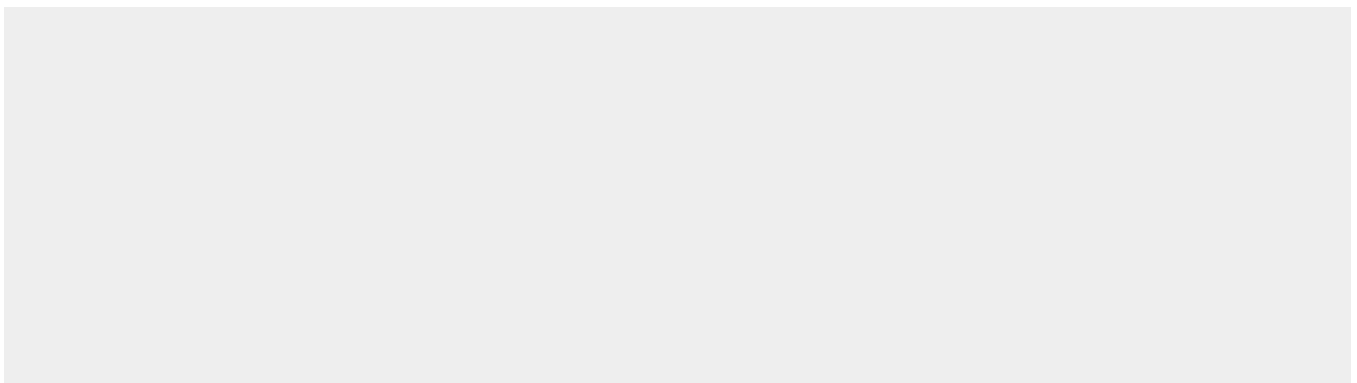
Tissue Location

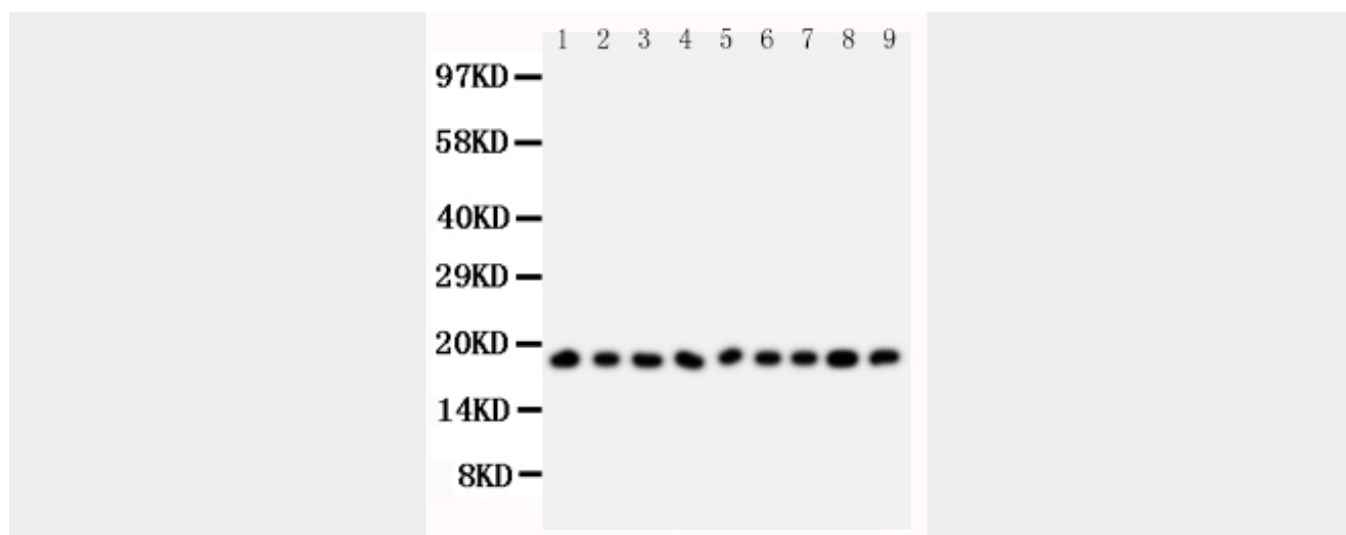
Pancreas and other tissues and body fluids (indicating it may have other physiological functions besides its role in digestion)

Anti-Ribonuclease A Antibody - Protocols

Provided below are standard protocols that you may find useful for product applications.

- [Western Blot](#)
- [Blocking Peptides](#)
- [Dot Blot](#)
- [Immunohistochemistry](#)
- [Immunofluorescence](#)
- [Immunoprecipitation](#)
- [Flow Cytometry](#)
- [Cell Culture](#)

Anti-Ribonuclease A Antibody - Images



Anti-Ribonuclease A antibody, ABO10825, Western blotting All lanes: Anti Ribonuclease A (ABO10825) at 0.5ug/ml Lane 1: MCF-7 Whole Cell Lysate at 40ug Lane 2: U87 Whole Cell Lysate at 40ug Lane 3: HELA Whole Cell Lysate at 40ug Lane 4: MM231 Whole Cell Lysate at 40ug Lane 5: JURKAT Whole Cell Lysate at 40ug Lane 6: SMMC Whole Cell Lysate at 40ug Lane 7: COLO320 Whole Cell Lysate at 40ug Lane 8: SW620 Whole Cell Lysate at 40ug Lane 9: CEM Whole Cell Lysate at 40ug Predicted bind size: 18KD Observed bind size: 18KD

Anti-Ribonuclease A Antibody - Background

RIBONUCLEASE A FAMILY, 1 (Ribonuclease pancreatic) is an enzyme that in humans is encoded by the RNASE1 gene. By genomic sequence analysis, RNASE1 gene is mapped to chromosome 14q11.2, where it is linked to 7 other RNase A superfamily genes. Monomeric human pancreatic RNase, devoid of any biological activity other than its RNA degrading ability, was engineered into a dimeric protein with a cytotoxic action on mouse and human tumor cells, but lacking any appreciable toxicity on mouse and human normal cells. This dimeric variant of human pancreas RNase selectively sensitizes to apoptotic death cells derived from a human thyroid tumor. Because of its selectivity for tumor cells, and because of its human origin, this protein represents a potentially very attractive, novel tool for anticancer therapy.