

**Anti-CCR4 Antibody**  
**Catalog # ABO10835****Specification**

---

**Anti-CCR4 Antibody - Product Information**

Application	WB
Primary Accession	<a href="#">P51680</a>
Host	Rabbit
Reactivity	Mouse, Rat
Clonality	Polyclonal
Format	Lyophilized

**Description**

Rabbit IgG polyclonal antibody for C-C chemokine receptor type 4(CCR4) detection. Tested with WB in Mouse;Rat.

**Reconstitution**

Add 0.2ml of distilled water will yield a concentration of 500ug/ml.

**Anti-CCR4 Antibody - Additional Information**

**Gene ID** 12773

**Other Names**

C-C chemokine receptor type 4, C-C CKR-4, CC-CKR-4, CCR-4, CCR4, CD194, Ccr4, Cmkbr4

**Calculated MW**

41408 MW KDa

**Application Details**

Western blot, 0.1-0.5 µg/ml, Mouse, Rat <br>

**Subcellular Localization**

Cell membrane; Multi-pass membrane protein.

**Tissue Specificity**

Expressed in the thymus, macrophages and T- and B-cells.

**Protein Name**

C-C chemokine receptor type 4(C-C CKR-4/CC-CKR-4/CCR-4/CCR4)

**Contents**

Each vial contains 5mg BSA, 0.9mg NaCl, 0.2mg Na<sub>2</sub>HPO<sub>4</sub>, 0.05mg Thimerosal, 0.05mg NaN<sub>3</sub>.

**Immunogen**

A synthetic peptide corresponding to a sequence in the middle region of mouse CCR4(346-360aa, SYTQSTVDHDFRDAL), identical to the related rat sequence.

**Purification**

Immunogen affinity purified.

**Cross Reactivity**

No cross reactivity with other proteins

**Storage**

**At -20°C for one year. After reconstitution, at 4°C for one month. It can also be aliquotted and stored frozen at -20°C for a longer time. Avoid repeated freezing and thawing.**

**Anti-CCR4 Antibody - Protein Information**

**Name** Ccr4

**Synonyms** Cmkbr4

**Function**

High affinity receptor for the C-C type chemokines CCL17/TARC and CCL22/MDC. The activity of this receptor is mediated by G(i) proteins which activate a phosphatidylinositol-calcium second messenger system. Could play a role in lipopolysaccharide (LPS)-induced endotoxic shock. In the CNS, could mediate hippocampal-neuron survival.

**Cellular Location**

Cell membrane; Multi-pass membrane protein.

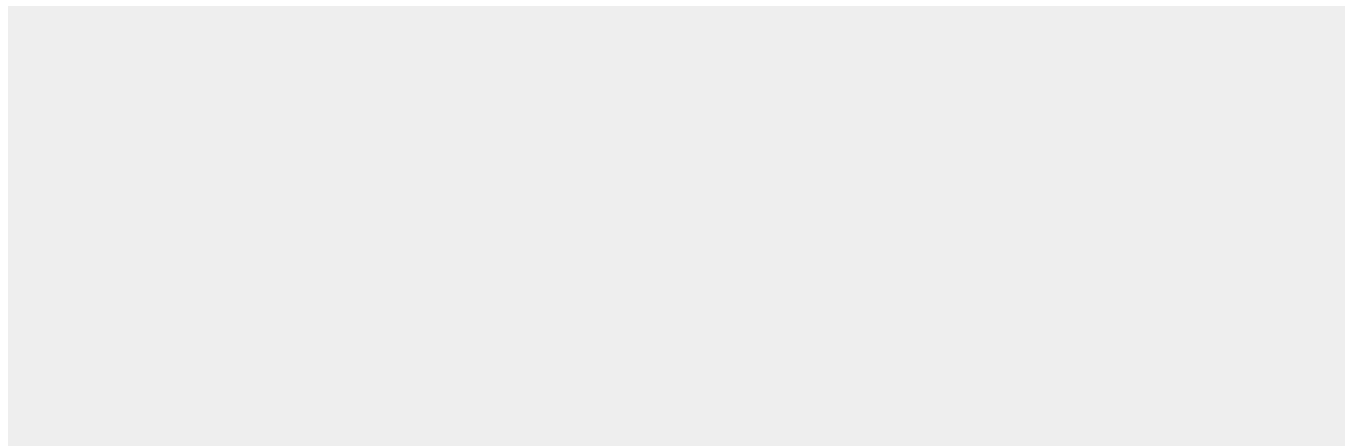
**Tissue Location**

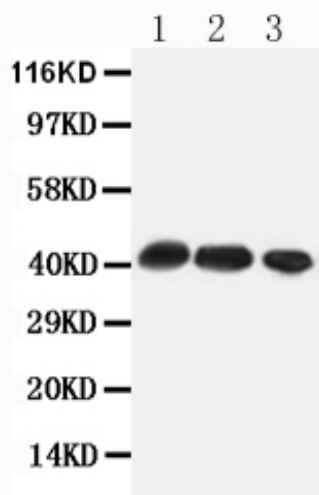
Expressed in the thymus, macrophages and T- and B- cells

**Anti-CCR4 Antibody - Protocols**

Provided below are standard protocols that you may find useful for product applications.

- [Western Blot](#)
- [Blocking Peptides](#)
- [Dot Blot](#)
- [Immunohistochemistry](#)
- [Immunofluorescence](#)
- [Immunoprecipitation](#)
- [Flow Cytometry](#)
- [Cell Culture](#)

**Anti-CCR4 Antibody - Images**



Anti-CCR4 antibody, ABO10835, Western blotting All lanes: Anti CCR4 (ABO10835) at 0.5ug/ml  
Lane 1: Rat Thymus Tissue Lysate at 50ug  
Lane 2: Rat Spleen Tissue Lysate at 50ug  
Lane 3: HEPA Whole Cell Lysate at 40ug  
Predicted bind size: 41KD  
Observed bind size: 41KD

#### Anti-CCR4 Antibody - Background

CCR4, C-C chemokine receptor type 4 is a protein that in humans is encoded by the CCR4 gene. CCR4 has also recently been designated CD194 (cluster of differentiation 194). The protein encoded by this gene belongs to the G protein-coupled receptor family. It is a receptor for the following CC chemokines. The CCR4 gene is mapped to chromosome 3. Chemokines are a group of small structurally related proteins that regulate cell trafficking of various types of leukocytes. The chemokines also play fundamental roles in the development, homeostasis, and function of the immune system, and they have effects on cells of the central nervous system as well as on endothelial cells involved in angiogenesis or angiostasis.