

Anti-CCL1 Antibody
Catalog # ABO10843**Specification**

Anti-CCL1 Antibody - Product Information

Application	WB
Primary Accession	P22362
Host	Rabbit
Reactivity	Human
Clonality	Polyclonal
Format	Lyophilized

Description

Rabbit IgG polyclonal antibody for C-C motif chemokine 1(CCL1) detection. Tested with WB in Human.

Reconstitution

Add 0.2ml of distilled water will yield a concentration of 500ug/ml.

Anti-CCL1 Antibody - Additional Information

Gene ID 6346

Other Names

C-C motif chemokine 1, Small-inducible cytokine A1, T lymphocyte-secreted protein I-309, CCL1, SCYA1

Calculated MW

10992 MW KDa

Application Details

Western blot, 0.1-0.5 µg/ml, Human

Subcellular Localization

Secreted.

Protein Name

C-C motif chemokine 1

Contents

Each vial contains 5mg BSA, 0.9mg NaCl, 0.2mg Na₂HPO₄, 0.05mg Thimerosal, 0.05mg NaN₃.

Immunogen

A synthetic peptide corresponding to a sequence at the C-terminus of human I-309(80-96aa WVQRHRKMLRHCPKSKRK).

Purification

Immunogen affinity purified.

Cross Reactivity

No cross reactivity with other proteins

Storage

At -20°C for one year. After reconstitution, at 4°C for one month. It can also be aliquotted and stored frozen at -20°C for a longer time. Avoid repeated freezing and thawing.

Sequence Similarities

Belongs to the intercrine beta (chemokine CC) family.

Anti-CCL1 Antibody - Protein Information

Name CCL1

Synonyms SCYA1

Function

Cytokine that is chemotactic for monocytes but not for neutrophils. Binds to CCR8.

Cellular Location

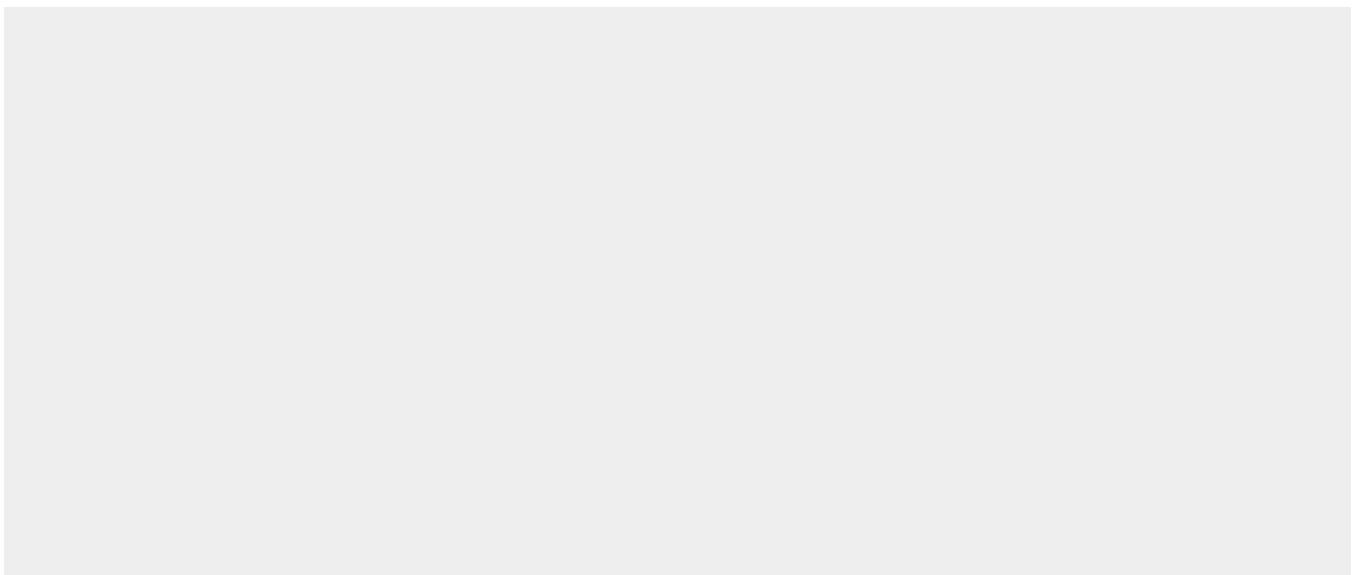
Secreted.

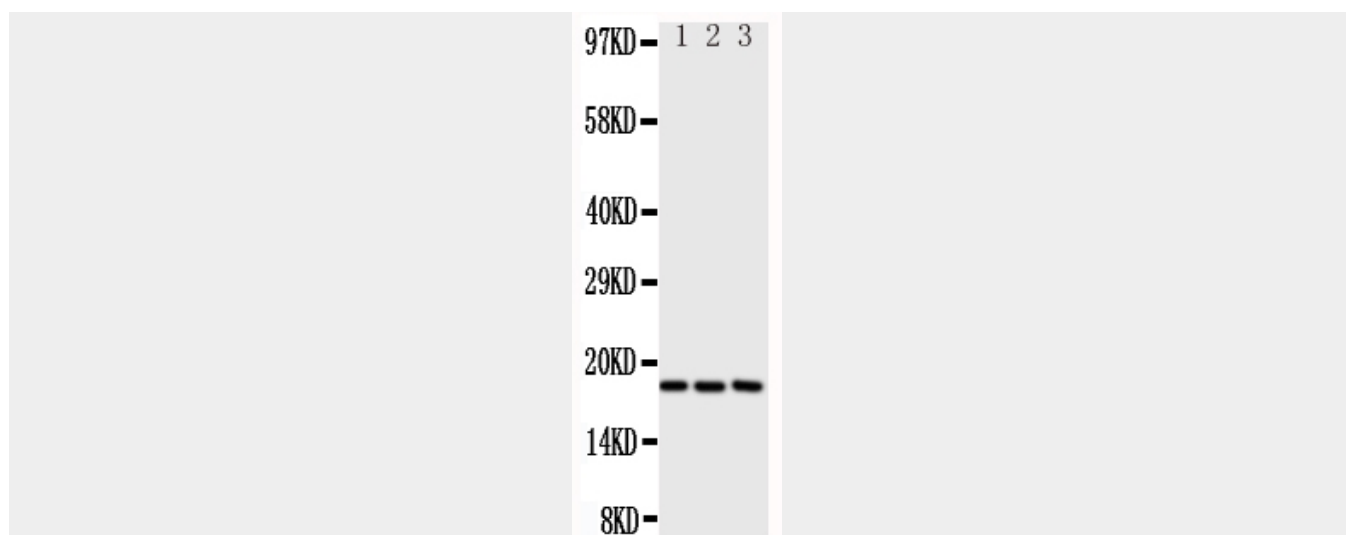
Anti-CCL1 Antibody - Protocols

Provided below are standard protocols that you may find useful for product applications.

- [Western Blot](#)
- [Blocking Peptides](#)
- [Dot Blot](#)
- [Immunohistochemistry](#)
- [Immunofluorescence](#)
- [Immunoprecipitation](#)
- [Flow Cytometry](#)
- [Cell Culture](#)

Anti-CCL1 Antibody - Images





Anti-I-309 antibody, ABO10843, Western blotting All lanes: Anti I-309 (ABO10843) at 0.5ug/ml
Lane 1: SCG Whole Cell Lysate at 40ug
Lane 2: COLO320 Whole Cell Lysate at 40ug
Lane 3: JURKAT Whole Cell Lysate at 40ug
Predicted bind size: 11KD
Observed bind size: 18KD

Anti-CCL1 Antibody - Background

CCL1, Chemokine(C-C motif) ligand 1, is one of several cytokine genes clustered on the q-arm of chromosome 17. Cytokines are a family of secreted proteins involved in immunoregulatory and inflammatory processes. The protein encoded by this gene is structurally related to the CXC subfamily of cytokines. Members of this subfamily are characterized by two cysteines separated by a single amino acid. This cytokine is secreted by activated T cells and displays chemotactic activity for monocytes but not for neutrophils. It binds to the chemokine receptor CCR8.