

Anti-Eotaxin Antibody
Catalog # ABO10845**Specification**

Anti-Eotaxin Antibody - Product Information

Application	WB
Primary Accession	P51671
Host	Rabbit
Reactivity	Human
Clonality	Polyclonal
Format	Lyophilized

Description

Rabbit IgG polyclonal antibody for Eotaxin(CCL11) detection. Tested with WB in Human.

Reconstitution

Add 0.2ml of distilled water will yield a concentration of 500ug/ml.

Anti-Eotaxin Antibody - Additional Information

Gene ID 6356

Other Names

Eotaxin, C-C motif chemokine 11, Eosinophil chemotactic protein, Small-inducible cytokine A11, CCL11, SCYA11

Calculated MW

10732 MW KDa

Application Details

Western blot, 0.1-0.5 µg/ml, Human

Subcellular Localization

Secreted.

Protein Name

Eotaxin

Contents

Each vial contains 5mg BSA, 0.9mg NaCl, 0.2mg Na₂HPO₄, 0.05mg Thimerosal, 0.05mg NaN₃.

Immunogen

A synthetic peptide corresponding to a sequence at the C-terminus of human Eotaxin(73-92aa CADPKKKWVQDSMKYLDQKS).

Purification

Immunogen affinity purified.

Cross Reactivity

No cross reactivity with other proteins

Storage

At -20°C for one year. After reconstitution, at 4°C for one month. It can also be aliquotted and stored frozen at -20°C for a longer time. Avoid repeated freezing and thawing.

Sequence Similarities

Belongs to the intercrine beta (chemokine CC) family.

Anti-Eotaxin Antibody - Protein Information

Name CCL11

Synonyms SCYA11

Function

In response to the presence of allergens, this protein directly promotes the accumulation of eosinophils, a prominent feature of allergic inflammatory reactions (PubMed: [8597956](http://www.uniprot.org/citations/8597956)). Binds to CCR3 (PubMed: [8631813](http://www.uniprot.org/citations/8631813)).

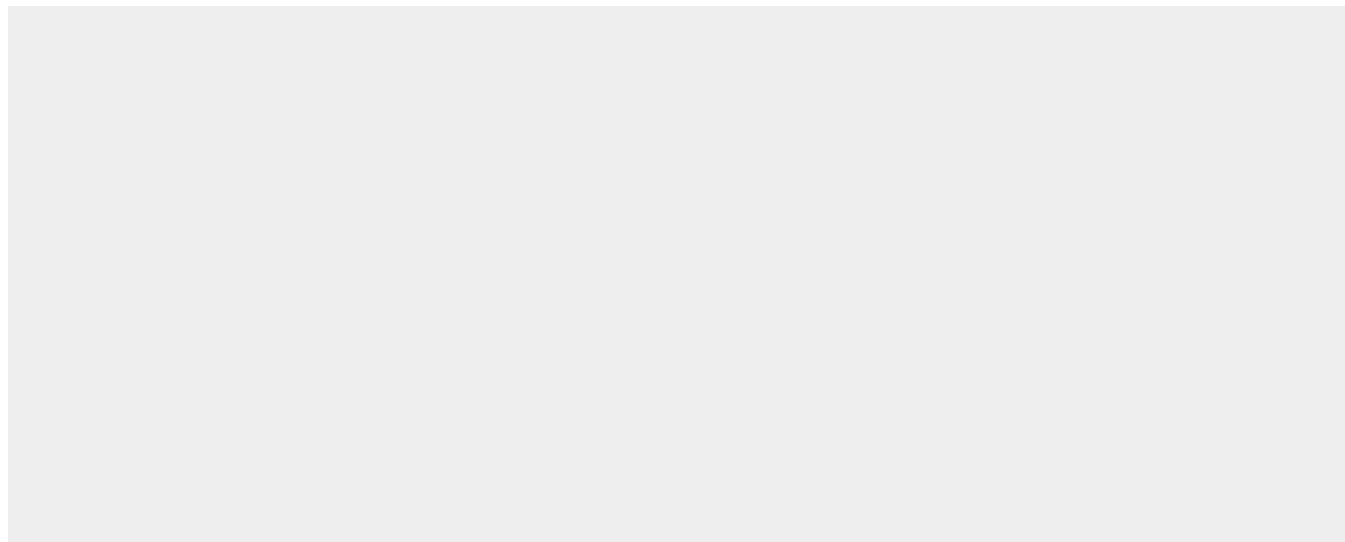
Cellular Location

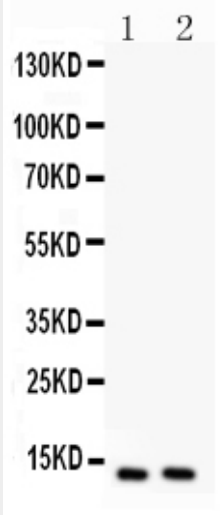
Secreted.

Anti-Eotaxin Antibody - Protocols

Provided below are standard protocols that you may find useful for product applications.

- [Western Blot](#)
- [Blocking Peptides](#)
- [Dot Blot](#)
- [Immunohistochemistry](#)
- [Immunofluorescence](#)
- [Immunoprecipitation](#)
- [Flow Cytometry](#)
- [Cell Culture](#)

Anti-Eotaxin Antibody - Images



Anti- Eotaxin antibody, ABO10845, Western blotting All lanes: Anti Eotaxin(ABO10845) at 0.5ug/ml
Lane 1: HELA Whole Cell Lysate at 40ug
Lane 2: MCF-7 Whole Cell Lysate at 40ug
Predicted bind size: 11KD
Observed bind size: 11KD

Anti-Eotaxin Antibody - Background

Eotaxin, also known as CCL11(Chemokine(C-C motif) ligand 11), a small cytokine belonging to the CC chemokine family. Eotaxin selectively recruits eosinophils by inducing their chemotaxis, and therefore, is implicated in allergic responses. The effects of Eotaxin are mediated by its binding to a G-protein-linked receptor known as a chemokine receptor. Chemokine receptors for which Eotaxin is a ligand include CCR2, CCR3 and CCR5. However, it has been found that eotaxin-1(CCL11) has high degree selectivity for its receptor, such that they are inactive on neutrophils and monocytes, which do not express CCR3. The gene for human Eotaxin is encoded on three exons and is located on chromosome 17q12.