

**Anti-Eotaxin Antibody**  
**Catalog # ABO10849****Specification**

---

**Anti-Eotaxin Antibody - Product Information**

Application	WB
Primary Accession	<a href="#">P48298</a>
Host	Rabbit
Reactivity	Mouse, Rat
Clonality	Polyclonal
Format	Lyophilized

**Description**

Rabbit IgG polyclonal antibody for Eotaxin(CCL11) detection. Tested with WB in Mouse;Rat.

**Reconstitution**

Add 0.2ml of distilled water will yield a concentration of 500ug/ml.

**Anti-Eotaxin Antibody - Additional Information**

**Gene ID** 20292

**Other Names**

Eotaxin, C-C motif chemokine 11, Eosinophil chemotactic protein, Small-inducible cytokine A11, Ccl11, Scya11

**Calculated MW**

10893 MW KDa

**Application Details**

Western blot, 0.1-0.5 µg/ml, Mouse, Rat<br>

**Subcellular Localization**

Secreted.

**Tissue Specificity**

Expressed constitutively in the thymus. Expression inducible in the lung (type I alveolar epithelial cells), intestine, heart, spleen, kidney.

**Protein Name**

Eotaxin

**Contents**

Each vial contains 5mg BSA, 0.9mg NaCl, 0.2mg Na<sub>2</sub>HPO<sub>4</sub>, 0.05mg Thimerosal, 0.05mg NaN<sub>3</sub>.

**Immunogen**

A synthetic peptide corresponding to a sequence at the C-terminus of mouse Eotaxin(73-93aa CADPKKKWVQDATKHLQKLQ), identical to the related rat sequence.

**Purification**

Immunogen affinity purified.

**Cross Reactivity**

No cross reactivity with other proteins

**Storage**

**At -20°C for one year. After reconstitution, at 4°C for one month. It can also be aliquotted and stored frozen at -20°C for a longer time. Avoid repeated freezing and thawing.**

**Anti-Eotaxin Antibody - Protein Information**

**Name** Ccl11

**Synonyms** Scya11

**Function**

In response to the presence of allergens, this protein directly promotes the accumulation of eosinophils (a prominent feature of allergic inflammatory reactions), but not lymphocytes, macrophages or neutrophils (PubMed:<a href="http://www.uniprot.org/citations/7568052" target="\_blank">7568052</a>, PubMed:<a href="http://www.uniprot.org/citations/8574847" target="\_blank">8574847</a>). Binds to CCR3 (By similarity).

**Cellular Location**

Secreted.

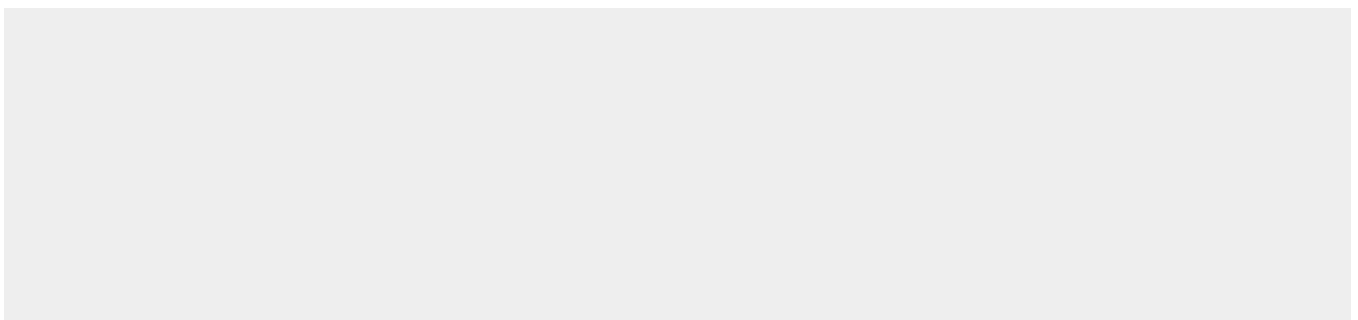
**Tissue Location**

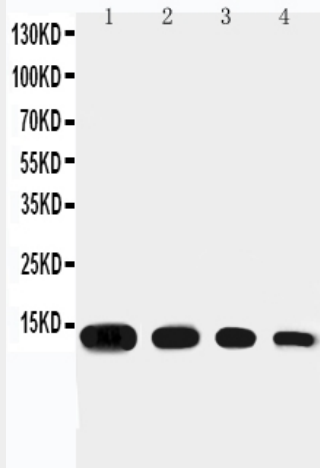
Expressed constitutively in the thymus. Expression inducible in the lung (type I alveolar epithelial cells), intestine, heart, spleen, kidney.

**Anti-Eotaxin Antibody - Protocols**

Provided below are standard protocols that you may find useful for product applications.

- [Western Blot](#)
- [Blocking Peptides](#)
- [Dot Blot](#)
- [Immunohistochemistry](#)
- [Immunofluorescence](#)
- [Immunoprecipitation](#)
- [Flow Cytometry](#)
- [Cell Culture](#)

**Anti-Eotaxin Antibody - Images**



Anti-Eotaxin antibody, ABO10849, Western blotting Lane 1: Recombinant mouse Eotaxin Protein 10ng Lane 2: Recombinant mouse Eotaxin Protein 5ng Lane 3: Recombinant mouse Eotaxin Protein 2.5ng Lane 4: Recombinant mouse Eotaxin Protein 1.25ng

#### **Anti-Eotaxin Antibody - Background**

Eotaxin, also known as CCL11 (Chemokine (C-C motif) ligand 11), a small cytokine belonging to the CC chemokine family. Eotaxin selectively recruits eosinophils by inducing their chemotaxis, and therefore, is implicated in allergic responses. The effects of Eotaxin are mediated by its binding to a G-protein-linked receptor known as a chemokine receptor. Chemokine receptors for which Eotaxin is a ligand include CCR2, CCR3 and CCR5. However, it has been found that eotaxin-1 (CCL11) has high degree selectivity for its receptor, such that they are inactive on neutrophils and monocytes, which do not express CCR3. The gene for human Eotaxin is encoded on three exons and is located on chromosome 17q12.