

Anti-Collagen IV Antibody
Catalog # ABO10853**Specification**

Anti-Collagen IV Antibody - Product Information

Application	WB
Primary Accession	P02462
Host	Rabbit
Reactivity	Human, Mouse, Rat
Clonality	Polyclonal
Format	Lyophilized

Description

Rabbit IgG polyclonal antibody for Collagen alpha-1(IV) chain(COL4A1) detection. Tested with WB in Human;Mouse;Rat.

Reconstitution

Add 0.2ml of distilled water will yield a concentration of 500ug/ml.

Anti-Collagen IV Antibody - Additional Information

Gene ID 1282

Other Names

Collagen alpha-1(IV) chain, Arresten, COL4A1

Calculated MW

160615 MW KDa

Application Details

Western blot, 0.1-0.5 µg/ml, Human, Rat, Mouse

Subcellular Localization

Secreted, extracellular space, extracellular matrix, basement membrane.

Tissue Specificity

Highly expressed in placenta. .

Protein Name

Collagen alpha-1(IV) chain

Contents

Each vial contains 5mg BSA, 0.9mg NaCl, 0.2mg Na₂HPO₄, 0.05mg Thimerosal, 0.05mg NaN₃.

Immunogen

A synthetic peptide corresponding to a sequence at the C-terminus of human Collagen IV(1654-1669aa ELRTHVSRQVCMRRT), identical to the related rat and mouse sequence.

Purification

Immunogen affinity purified.

Cross Reactivity

No cross reactivity with other proteins

Storage

At -20°C for one year. After reconstitution, at 4°C for one month. It can also be aliquotted and stored frozen at -20°C for a longer time. Avoid repeated freezing and thawing.

Sequence Similarities

Belongs to the type IV collagen family.

Anti-Collagen IV Antibody - Protein Information

Name COL4A1 ([HGNC:2202](#))

Function

Type IV collagen is the major structural component of glomerular basement membranes (GBM), forming a 'chicken-wire' meshwork together with laminins, proteoglycans and entactin/nidogen.

Cellular Location

Secreted, extracellular space, extracellular matrix, basement membrane
{ECO:0000250|UniProtKB:P02463}

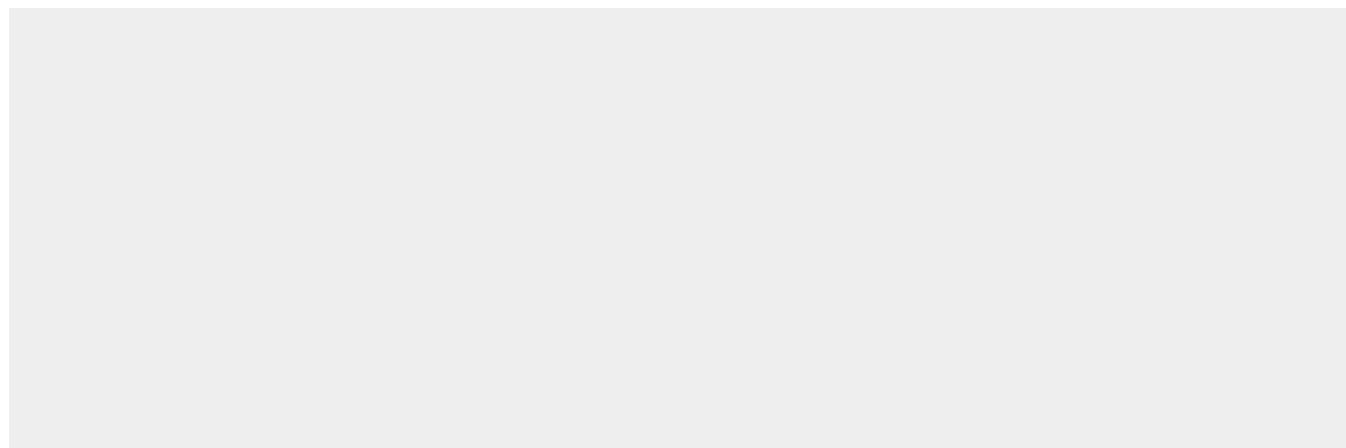
Tissue Location

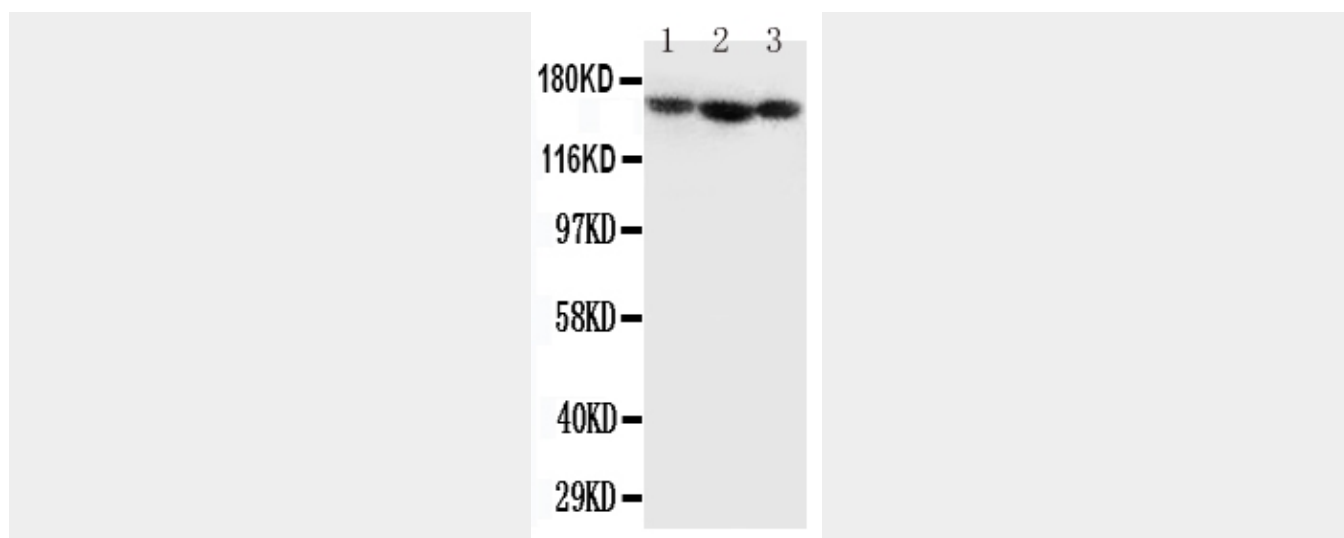
Highly expressed in placenta.

Anti-Collagen IV Antibody - Protocols

Provided below are standard protocols that you may find useful for product applications.

- [Western Blot](#)
- [Blocking Peptides](#)
- [Dot Blot](#)
- [Immunohistochemistry](#)
- [Immunofluorescence](#)
- [Immunoprecipitation](#)
- [Flow Cytometry](#)
- [Cell Culture](#)

Anti-Collagen IV Antibody - Images



Anti-Collagen IV antibody, ABO10853, Western blotting
Lane 1: MCF-7 Cell Lysate
Lane 2: SCG Cell Lysate
Lane 3: SW620 Cell Lysate

Anti-Collagen IV Antibody - Background

Collagen alpha-1(IV) chain is a protein that in humans is encoded by the COL4A1 gene. Type IV collagen is the major structural component of glomerular basement membranes(GBM), forming a 'chicken-wire' meshwork together with laminins, proteoglycans and entactin/nidogen. Like the other members of the type IV collagen gene family, this gene is organized in a head-to-head conformation with another type IV collagen gene so that each gene pair shares a common promoter. Mutations in COL4A1 exons 24 and 25 are associated with HANAC (autosomal dominant hereditary angiopathy with nephropathy, aneurysms, and muscle cramps).