

Anti-hCG Receptor Antibody
Catalog # ABO10870**Specification**

Anti-hCG Receptor Antibody - Product Information

Application	WB, IHC-P
Primary Accession	P22888
Host	Rabbit
Reactivity	Human, Rat
Clonality	Polyclonal
Format	Lyophilized

Description

Rabbit IgG polyclonal antibody for Lutropin-choriogonadotropic hormone receptor(LHCGR) detection. Tested with WB, IHC-P in Human;Rat.

Reconstitution

Add 0.2ml of distilled water will yield a concentration of 500ug/ml.

Anti-hCG Receptor Antibody - Additional Information

Gene ID 3973

Other Names

Lutropin-choriogonadotropic hormone receptor, LH/CG-R, Luteinizing hormone receptor, LHR, LSH-R, LHCGR, LCGR, LGR2, LHRHR

Calculated MW

78643 MW KDa

Application Details

Immunohistochemistry(Paraffin-embedded Section), 0.5-1 µg/ml, Rat, Human , By Heat
Western blot, 0.1-0.5 µg/ml, Human, Rat

Subcellular Localization

Cell membrane; Multi-pass membrane protein.

Tissue Specificity

Gonadal and thyroid cells.

Protein Name

Lutropin-choriogonadotropic hormone receptor(LH/CG-R)

Contents

Each vial contains 5mg BSA, 0.9mg NaCl, 0.2mg Na₂HPO₄, 0.05mg Thimerosal, 0.05mg NaN₃.

Immunogen

A synthetic peptide corresponding to a sequence at the N-terminus of human hCG receptor(127-143aa YLSICNTGIRKFPDVTK), different from the relative rat sequence by two amino acids, mouse sequence by three amino acids.

Purification

Immunogen affinity purified.

Cross Reactivity

No cross reactivity with other proteins

Storage

At -20°C for one year. After reconstitution, at 4°C for one month. It can also be aliquotted and stored frozen at -20°C for a longer time. Avoid repeated freezing and thawing.

Sequence Similarities

Belongs to the G-protein coupled receptor 1 family. FSH/LSH/TSH subfamily.

Anti-hCG Receptor Antibody - Protein Information

Name LHCGR

Synonyms LCGR, LGR2, LHRHR

Function

Receptor for lutropin-choriogonadotropic hormone (PubMed:[11847099](http://www.uniprot.org/citations/11847099)). The activity of this receptor is mediated by G proteins which activate adenylate cyclase (PubMed:[11847099](http://www.uniprot.org/citations/11847099)).

Cellular Location

Cell membrane; Multi-pass membrane protein

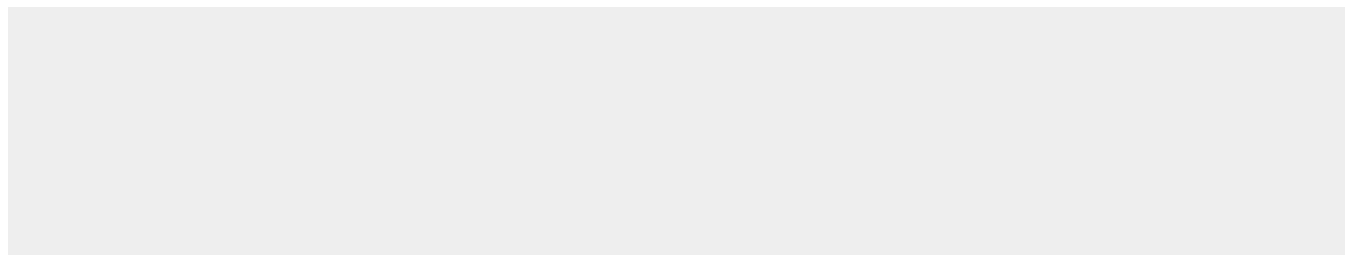
Tissue Location

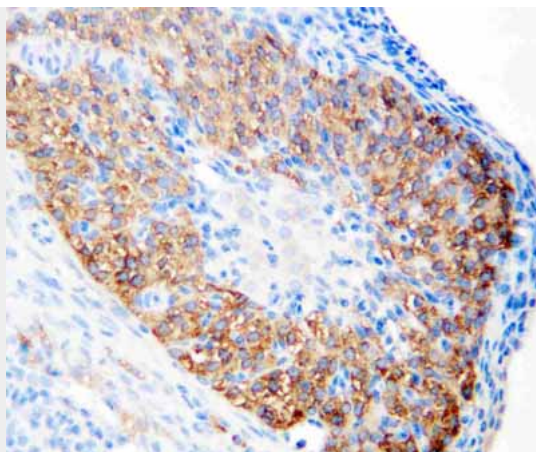
Gonadal and thyroid cells.

Anti-hCG Receptor Antibody - Protocols

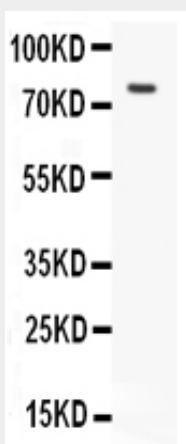
Provided below are standard protocols that you may find useful for product applications.

- [Western Blot](#)
- [Blocking Peptides](#)
- [Dot Blot](#)
- [Immunohistochemistry](#)
- [Immunofluorescence](#)
- [Immunoprecipitation](#)
- [Flow Cytometry](#)
- [Cell Culture](#)

Anti-hCG Receptor Antibody - Images



Anti-hCG receptor antibody, ABO10870, IHC(P)IHC(P): Rat Ovary Tissue



Anti-hCG receptor antibody, ABO10870, Western blottingAll lanes: Anti hCG receptor (ABO10870) at 0.5ug/mlWB: MCF-7 Whole Cell Lysate at 40ugPredicted bind size: 78KDObserved bind size: 78KD

Anti-hCG Receptor Antibody - Background

The luteinizing hormone/choriogonadotropin receptor is a member of a subfamily of G protein-coupled receptors(GPCR) characterized by the presence of a large N-terminal extracellular domain containing several leucine-rich repeats(LRR). This glycoprotein hormone receptor family has been named the LRR-containing GPCR(LGR) family. The LHCGR gene contains 11 exons and spans approximately 80 kb and it is mapped to chromosome 2p21. In the ovary, theca, stromal, late-stage(luteinizing) granulosa, and luteal cells contain LHCGR. In the testes, Leydig cells contain LHCGR.