

Anti-LIF Antibody
Catalog # ABO10880**Specification**

Anti-LIF Antibody - Product Information

Application	WB
Primary Accession	P09056
Host	Rabbit
Reactivity	Mouse, Rat
Clonality	Polyclonal
Format	Lyophilized

Description

Rabbit IgG polyclonal antibody for Leukemia inhibitory factor(LIF) detection. Tested with WB in Mouse;Rat.

Reconstitution

Add 0.2ml of distilled water will yield a concentration of 500ug/ml.

Anti-LIF Antibody - Additional Information

Gene ID 16878

Other Names

Leukemia inhibitory factor, LIF, Differentiation-stimulating factor, D factor, Lif

Calculated MW

22287 MW KDa

Application Details

Western blot, 0.1-0.5 µg/ml, Mouse, Rat

Subcellular Localization

Secreted.

Protein Name

Leukemia inhibitory factor(LIF)

Contents

Each vial contains 5mg BSA, 0.9mg NaCl, 0.2mg Na₂HPO₄, 0.05mg Thimerosal, 0.05mg NaN₃.

Immunogen

A synthetic peptide corresponding to a sequence at the C-terminus of mouse LIF(175-194aa DKEAFQRKKLGCCQLLGTYKQ), identical to the related rat sequence.

Purification

Immunogen affinity purified.

Cross Reactivity

No cross reactivity with other proteins

Storage

At -20°C for one year. After reconstitution, at 4°C for one month. It can also be aliquotted and stored frozen at -20°C for a longer time. Avoid repeated freezing and thawing.

Anti-LIF Antibody - Protein Information

Name Lif

Function

LIF has the capacity to induce terminal differentiation in leukemic cells. Its activities include the induction of hematopoietic differentiation in normal and myeloid leukemia cells, the induction of neuronal cell differentiation, and the stimulation of acute-phase protein synthesis in hepatocytes.

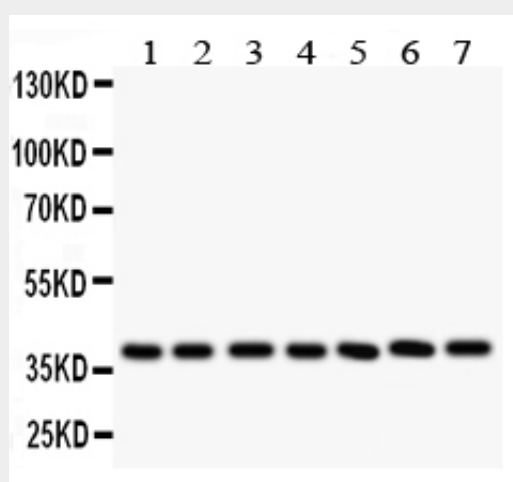
Cellular Location

Secreted.

Anti-LIF Antibody - Protocols

Provided below are standard protocols that you may find useful for product applications.

- [Western Blot](#)
- [Blocking Peptides](#)
- [Dot Blot](#)
- [Immunohistochemistry](#)
- [Immunofluorescence](#)
- [Immunoprecipitation](#)
- [Flow Cytometry](#)
- [Cell Culture](#)

Anti-LIF Antibody - Images

Anti-LIF antibody, ABO10880, Western blotting All lanes: Anti LIF (ABO10880) at 0.5ug/ml
Lane 1: Rat Intestine Tissue Lysate at 50ug
Lane 2: Rat Brain Tissue Lysate at 50ug
Lane 3: Rat Spleen Tissue Lysate at 50ug
Lane 4: Rat Thymus Tissue Lysate at 50ug
Lane 5: Mouse Brain Tissue Lysate at 50ug
Lane 6: Mouse Kidney Tissue Lysate at 50ug
Lane 7: Mouse Liver Tissue Lysate at 50ug

50ug Predicted bind size: 22KD Observed bind size: 40KD

Anti-LIF Antibody - Background

LIF is a pleiotropic cytokine produced at the maternal-fetal interface which has been shown to play an essential role in implantation in mice. LIF is produced in high amounts by the human endometrium and the trophoblast itself, and LIF receptors are present on cytotrophoblast cells. LIF could, thus, play a role in modulating HLA-G production and immune tolerance at the maternal-fetal interface. The gene maps to 22q11-q12.2, between the Philadelphia translocation BCR gene and the breakpoint of the translocation in cell line GM2324 at 22q12.2.