

Anti-FASL Antibody
Catalog # ABO10890**Specification**

Anti-FASL Antibody - Product Information

Application	WB
Primary Accession	P48023
Host	Rabbit
Reactivity	Human
Clonality	Polyclonal
Format	Lyophilized

Description

Rabbit IgG polyclonal antibody for Tumor necrosis factor ligand superfamily member 6(FASLG) detection. Tested with WB, IHC-P in Human.

Reconstitution

Add 0.2ml of distilled water will yield a concentration of 500ug/ml.

Anti-FASL Antibody - Additional Information

Gene ID 356

Other Names

Tumor necrosis factor ligand superfamily member 6, Apoptosis antigen ligand, APTL, CD95 ligand, CD95-L, Fas antigen ligand, Fas ligand, FasL, CD178, Tumor necrosis factor ligand superfamily member 6, membrane form, Tumor necrosis factor ligand superfamily member 6, soluble form, Receptor-binding FasL ectodomain, Soluble Fas ligand, sFasL, ADAM10-processed FasL form, APL, FasL intracellular domain, FasL ICD, SPPL2A-processed FasL form, SPA, FASLG, APT1LG1, CD95L, FASL, TNFSF6

Calculated MW

Tumor necrosis factor ligand superfamily member 6 kDa

Application Details

Immunohistochemistry(Paraffin-embedded Section), 0.5-1 µg/ml, Human, By Heat
Western blot, 0.1-0.5 µg/ml, Human

Subcellular Localization

Cytokine that binds to TNFRSF6/FAS, a receptor that transduces the apoptotic signal into cells. May be involved in cytotoxic T-cell mediated apoptosis and in T-cell development.

TNFRSF6/FAS-mediated apoptosis may have a role in the induction of peripheral tolerance, in the antigen-stimulated suicide of mature T-cells, or both. Binding to the decoy receptor TNFRSF6B/DcR3 modulates its effects. .

Tissue Specificity

Cell membrane; Single-pass type II membrane protein. Cytoplasmic vesicle lumen. Lysosome lumen. Is internalized into multivesicular bodies of secretory lysosomes after phosphorylation by FGR and monoubiquitination. Colocalizes with the SPPL2A protease at the cell membrane.

Contents

Each vial contains 5mg BSA, 0.9mg NaCl, 0.2mg Na₂HPO₄, 0.05mg Thimerosal, 0.05mg NaN₃.

Immunogen

A synthetic peptide corresponding to a sequence at the C-terminus of human Fas Ligand(263-281aa ELSLVNFEESQTFFGLYKL).

Purification

Immunogen affinity purified.

Cross Reactivity

No cross reactivity with other proteins

Storage

At -20°C for one year. After reconstitution, at 4°C for one month. It can also be aliquotted and stored frozen at -20°C for a longer time. Avoid repeated freezing and thawing.

Sequence Similarities

Boster recommends Enhanced Chemiluminescent Kit with anti-Rabbit IgG (EK1002) for Western blot, and HRP Conjugated anti-Rabbit IgG Super Vision Assay Kit (SV0002-1) for IHC(P).

Anti-FASL Antibody - Protein Information**Name** FASLG**Synonyms** APT1LG1, CD95L, FASL, TNFSF6**Function**

Cytokine that binds to TNFRSF6/FAS, a receptor that transduces the apoptotic signal into cells (PubMed: 26334989, PubMed: 9228058). Involved in cytotoxic T-cell-mediated apoptosis, natural killer cell-mediated apoptosis and in T-cell development (PubMed: 9228058, PubMed: 7528780, PubMed: 9427603). Initiates fratricidal/suicidal activation-induced cell death (AICD) in antigen- activated T-cells contributing to the termination of immune responses (By similarity). TNFRSF6/FAS-mediated apoptosis has also a role in the induction of peripheral tolerance (By similarity). Binds to TNFRSF6B/DcR3, a decoy receptor that blocks apoptosis (PubMed: 27806260).

Cellular Location

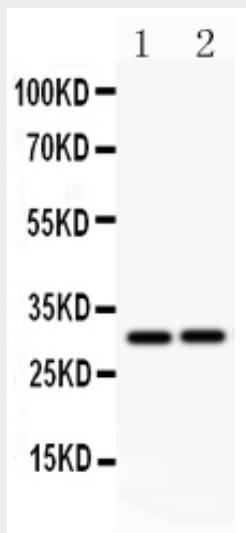
Cell membrane; Single-pass type II membrane protein. Cytoplasmic vesicle lumen Lysosome lumen. Note=Is internalized into multivesicular bodies of secretory lysosomes after phosphorylation by FGR and monoubiquitination (PubMed:17164290). Colocalizes with the SPPL2A protease at the cell membrane (PubMed:17557115) [FasL intracellular domain]: Nucleus. Note=The FasL ICD cytoplasmic form is translocated into the nucleus.

Anti-FASL Antibody - Protocols

Provided below are standard protocols that you may find useful for product applications.

- [Western Blot](#)
- [Blocking Peptides](#)
- [Dot Blot](#)
- [Immunohistochemistry](#)
- [Immunofluorescence](#)
- [Immunoprecipitation](#)
- [Flow Cytometry](#)
- [Cell Culture](#)

Anti-FASL Antibody - Images



Anti-FASLG antibody, ABO10890, Western blottingAll lanes: Anti FASLG (ABO10890) at 0.5ug/mlLane 1: JURKAT Whole Cell Lysate at 40ugLane 2: HL60 Whole Cell Lysate at 40ugPredicted bind size: 31 KDObserved bind size: 31 KD

Anti-FASL Antibody - Background

Fas ligand(FasL or CD95L) is a type-II transmembrane protein that belongs to the tumor necrosis factor(TNF) family. Its binding with its receptor induces apoptosis. The human FASL gene consists of approximately 8 kb and is split into 4 exons. Fas ligand/receptor interactions play an important role in the regulation of the immune system and the progression of cancer. Fas ligand or FasL is a homotrimeric type II transmembrane protein. It signals through trimerization of FasR, which spans the membrane of the target" cell. This trimerization usually leads to apoptosis