

Anti-HSPBAP1 Antibody
Catalog # ABO10924**Specification**

Anti-HSPBAP1 Antibody - Product Information

Application	WB
Primary Accession	Q96EW2
Host	Rabbit
Reactivity	Human
Clonality	Polyclonal
Format	Lyophilized

Description

Rabbit IgG polyclonal antibody for HSPB1-associated protein 1(HSPBAP1) detection. Tested with WB in Human.

Reconstitution

Add 0.2ml of distilled water will yield a concentration of 500ug/ml.

Anti-HSPBAP1 Antibody - Additional Information

Gene ID 79663

Other Names

HSPB1-associated protein 1, 27 kDa heat shock protein-associated protein 1, Protein associated with small stress protein 1, HSPBAP1, PASS1

Calculated MW

55167 MW KDa

Application Details

Western blot, 0.1-0.5 µg/ml, Human

Subcellular Localization

Cytoplasm .

Tissue Specificity

Widely expressed. .

Protein Name

HSPB1-associated protein 1

Contents

Each vial contains 5mg BSA, 0.9mg NaCl, 0.2mg Na₂HPO₄, 0.05mg Thimerosal, 0.05mg NaN₃.

Immunogen

A synthetic peptide corresponding to a sequence at the N-terminus of human HSPBAP1(118-136aa YDHSKFWAYADYKYFVSLF), different from the related rat sequences by one amino acid, and different from the related mouse sequences by two amino acids.

Purification

Immunogen affinity purified.

Cross Reactivity

No cross reactivity with other proteins

Storage

At -20°C for one year. After reconstitution, at 4°C for one month. It can also be aliquotted and stored frozen at -20°C for a longer time. Avoid repeated freezing and thawing.

Sequence Similarities

Contains 1 JmjC domain.

Anti-HSPBAP1 Antibody - Protein Information

Name HSPBAP1

Synonyms PASS1

Function

May play a role in cellular stress response.

Cellular Location

Cytoplasm.

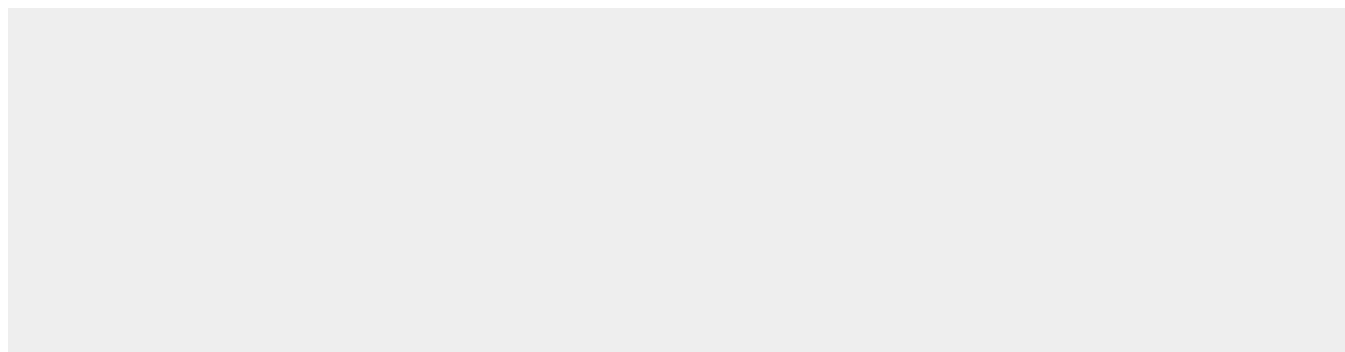
Tissue Location

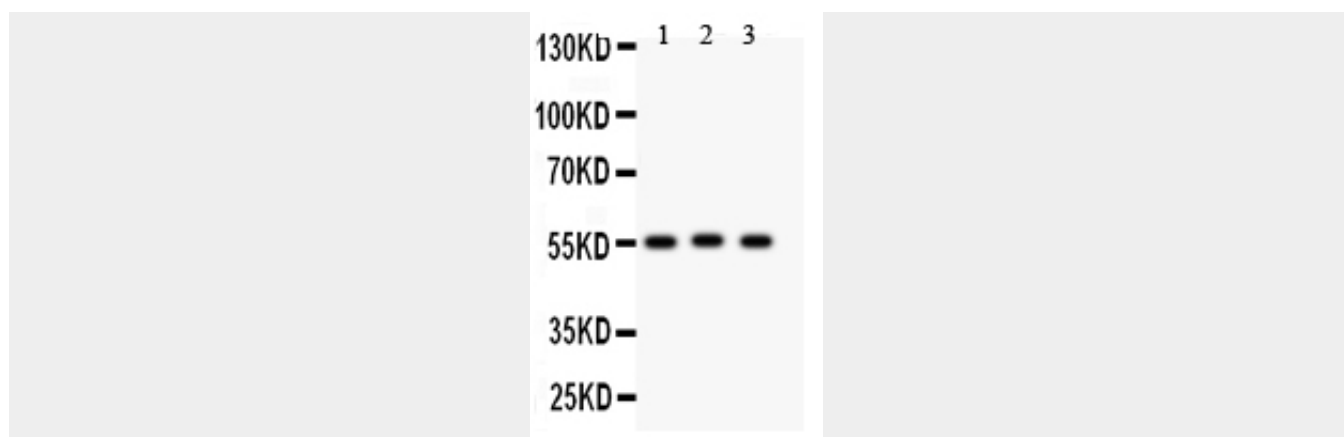
Widely expressed..

Anti-HSPBAP1 Antibody - Protocols

Provided below are standard protocols that you may find useful for product applications.

- [Western Blot](#)
- [Blocking Peptides](#)
- [Dot Blot](#)
- [Immunohistochemistry](#)
- [Immunofluorescence](#)
- [Immunoprecipitation](#)
- [Flow Cytometry](#)
- [Cell Culture](#)

Anti-HSPBAP1 Antibody - Images



Anti-HSPBAP1 antibody, ABO10924, Western blotting All lanes: Anti HSPBAP1 (ABO10924) at 0.5ug/ml Lane 1: U87 Whole Cell Lysate at 40ug Lane 2: A549 Whole Cell Lysate at 40ug Lane 3: SMMC Whole Cell Lysate at 40ug Predicted bind size: 55 KD Observed bind size: 55 KD

Anti-HSPBAP1 Antibody - Background

HSPBAP1(HEAT-SHOCK 27-KD PROTEIN-ASSOCIATED PROTEIN 1), the other entities represented in this entry is DIRC3 FUSION GENE. HSPBAP1 shares 80% identity with the rat homolog, PASS1. The HSPBAP1 gene is mapped to chromosome 3q21.1. RT-PCR detected expression of HSPABAP1 in all tissues examined except brain. Highest expression was detected in thymus, ovary, and pancreas. The HSPBAP1 gene contains 8 exons. The putative 451-amino acid truncated HSPBAP1 protein retained its JmjC and HSP27 -interacting domains, which are associated with chromatin remodeling and stress response, respectively.