

**Anti-Angiotensinogen Antibody**  
**Catalog # ABO10958****Specification**

---

**Anti-Angiotensinogen Antibody - Product Information**

Application	WB
Primary Accession	<a href="#">P11859</a>
Host	Rabbit
Reactivity	Mouse, Rat
Clonality	Polyclonal
Format	Lyophilized

**Description**

Rabbit IgG polyclonal antibody for Angiotensinogen(AGT) detection. Tested with WB in Mouse;Rat.

**Reconstitution**

Add 0.2ml of distilled water will yield a concentration of 500ug/ml.

**Anti-Angiotensinogen Antibody - Additional Information****Other Names**

Angiotensinogen, Serpin A8, Angiotensin-1, Angiotensin 1-10, Angiotensin I, Ang I, Angiotensin-2, Angiotensin 1-8, Angiotensin II, Ang II, Angiotensin-3, Angiotensin 2-8, Angiotensin III, Ang III, Des-Asp[1]-angiotensin II, Angiotensin-4, Angiotensin 3-8, Angiotensin IV, Ang IV, Angiotensin 1-9, Angiotensin 1-7, Angiotensin 1-5, Angiotensin 1-4, Agt, Serpina8

**Calculated MW**

51990 MW KDa

**Application Details**

Western blot, 0.1-0.5 µg/ml, Mouse, Rat<br>

**Subcellular Localization**

Secreted.

**Tissue Specificity**

Expressed by the liver and secreted in plasma.

**Protein Name**

Angiotensinogen

**Contents**

Each vial contains 5mg BSA, 0.9mg NaCl, 0.2mg Na<sub>2</sub>HPO<sub>4</sub>, 0.05mg Thimerosal, 0.05mg NaN<sub>3</sub>.

**Immunogen**

A synthetic peptide corresponding to a sequence at the N-terminus of mouse Angiotensinogen(25-36aa DRVYIHPFHLly), identical to the related rat sequence.

**Purification**

Immunogen affinity purified.

**Cross Reactivity**

No cross reactivity with other proteins

**Storage**

At -20°C for one year. After reconstitution, at 4°C for one month. It can also be aliquotted and stored frozen at -20°C for a longer time. Avoid repeated freezing and thawing.

**Anti-Angiotensinogen Antibody - Protein Information**

**Name** Agt

**Synonyms** Serpina8

**Function**

Essential component of the renin-angiotensin system (RAS), a potent regulator of blood pressure, body fluid and electrolyte homeostasis.

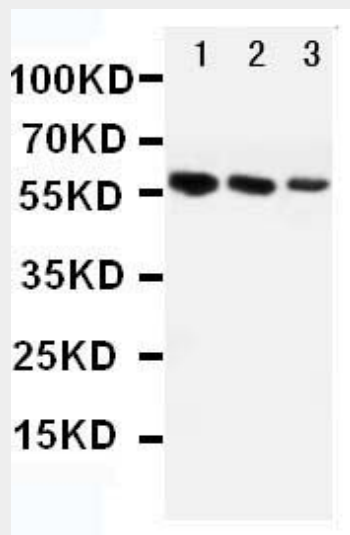
**Cellular Location**

Secreted {ECO:0000250|UniProtKB:P01019}.

**Anti-Angiotensinogen Antibody - Protocols**

Provided below are standard protocols that you may find useful for product applications.

- [Western Blot](#)
- [Blocking Peptides](#)
- [Dot Blot](#)
- [Immunohistochemistry](#)
- [Immunofluorescence](#)
- [Immunoprecipitation](#)
- [Flow Cytometry](#)
- [Cell Culture](#)

**Anti-Angiotensinogen Antibody - Images**

Anti-Angiotensinogen antibody, ABO10958, Western blotting Lane 1: Mouse Liver Tissue Lysate  
Lane 2: Rat Liver Tissue Lysate Lane 3: Rat Cardiac Muscle Tissue Lysate

#### **Anti-Angiotensinogen Antibody - Background**

AGT(ANGIOTENSINOGEN), also called SERPINA8, is an alpha-2-globulin that is produced constitutively and released into the circulation mainly by the liver. ATG is a member of the serpin family, although it is not known to inhibit other enzymes, unlike most serpins. Angiotensinogen is also known as renin substrate. The AGT gene is mapped on 1q42.2. And the human angiotensinogen gene contains 5 exons. The expression of AGT and enzymes required for its conversion to angiotensin II in human adipose tissue. Western blot analysis showed a distinct band of expected size of the angiotensinogen protein(61 kD) in isolated adipocytes. The more pronounced AGT increase in TT subjects resulted in similar plasma renin activity at a lower plasma active renin concentration, with a higher plasma renin activity/active renin ratio.