

**Anti-APLP2 Antibody**  
**Catalog # ABO10969****Specification**

---

**Anti-APLP2 Antibody - Product Information**

Application	WB
Primary Accession	<a href="#">Q06481</a>
Host	Rabbit
Reactivity	Human, Mouse, Rat
Clonality	Polyclonal
Format	Lyophilized

**Description**

Rabbit IgG polyclonal antibody for Amyloid-like protein 2(APLP2) detection. Tested with WB in Human;Mouse;Rat.

**Reconstitution**

Add 0.2ml of distilled water will yield a concentration of 500ug/ml.

**Anti-APLP2 Antibody - Additional Information**

**Gene ID** 334

**Other Names**

Amyloid-like protein 2, APLP-2, APPH, Amyloid protein homolog, CDEI box-binding protein, CDEBP, APLP2, APPL2

**Calculated MW**

86956 MW KDa

**Application Details**

Western blot, 0.1-0.5 µg/ml, Human, Rat, Mouse<br>

**Subcellular Localization**

Cell membrane ; Single-pass type I membrane protein . Nucleus .

**Tissue Specificity**

Expressed in placenta, brain, heart, lung, liver, kidney and endothelial tissues.

**Protein Name**

Amyloid-like protein 2(APLP-2)

**Contents**

Each vial contains 5mg BSA, 0.9mg NaCl, 0.2mg Na<sub>2</sub>HPO<sub>4</sub>, 0.05mg Thimerosal, 0.05mg NaN<sub>3</sub>.

**Immunogen**

A synthetic peptide corresponding to a sequence at the C-terminus of human APLP2(639-656aa EEKVINSKNKVDENMVID), different from the related rat and mouse sequences by one amino acid.

**Purification**

Immunogen affinity purified.

**Cross Reactivity**

No cross reactivity with other proteins

**Storage**

**At -20°C for one year. After reconstitution, at 4°C for one month. It can also be aliquotted and stored frozen at -20°C for a longer time. Avoid repeated freezing and thawing.**

**Sequence Similarities**

Belongs to the APP family.

**Anti-APLP2 Antibody - Protein Information**

**Name** APLP2 ([HGNC:598](#))

**Function**

May play a role in the regulation of hemostasis. The soluble form may have inhibitory properties towards coagulation factors. May interact with cellular G-protein signaling pathways. May bind to the DNA 5'-GTCACATG-3' (CDEI box). Inhibits trypsin, chymotrypsin, plasmin, factor XIA and plasma and glandular kallikrein. Modulates the Cu/Zn nitric oxide-catalyzed autodegradation of GPC1 heparan sulfate side chains in fibroblasts (By similarity).

**Cellular Location**

Cell membrane; Single-pass type I membrane protein. Nucleus

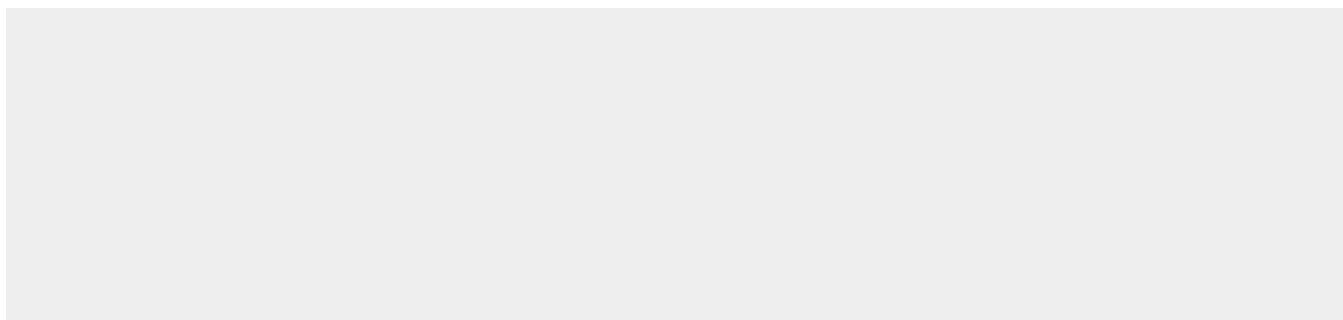
**Tissue Location**

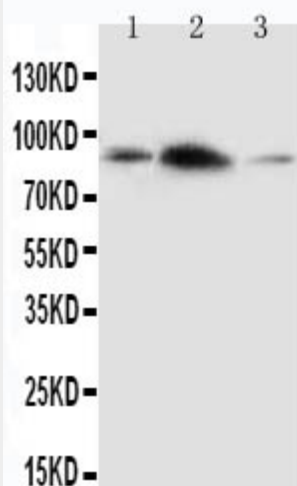
Expressed in placenta, brain, heart, lung, liver, kidney and endothelial tissues

**Anti-APLP2 Antibody - Protocols**

Provided below are standard protocols that you may find useful for product applications.

- [Western Blot](#)
- [Blocking Peptides](#)
- [Dot Blot](#)
- [Immunohistochemistry](#)
- [Immunofluorescence](#)
- [Immunoprecipitation](#)
- [Flow Cytometry](#)
- [Cell Culture](#)

**Anti-APLP2 Antibody - Images**



Anti-APLP2 antibody, ABO10969, Western blotting  
Lane 1: Rat Brain Tissue Lysate  
Lane 2: Rat Heart Tissue Lysate  
Lane 3: SMMC Cell Lysate

### **Anti-APLP2 Antibody - Background**

APLP2 (Amyloid beta(A4) precursor-like protein 2), also known as CDEBP or SPERM MEMBRANE PROTEIN, is a protein that in humans is encoded by the APLP2 gene. The APLP2 gene is mapped on 11q24.3. The human amyloid precursor-like protein APLP2 is a highly conserved homolog of a sequence-specific DNA-binding mouse protein with an important function in the cell cycle. APLP2 along with APLP1 are important modulators of glucose and insulin homeostasis. APLP2 associates with antigen presentation molecules like MHC class I molecules and regulates their surface expression by enhancing endocytosis.