

Anti-LCN1 Antibody
Catalog # ABO10974**Specification**

Anti-LCN1 Antibody - Product Information

Application	WB, IHC
Primary Accession	P31025
Host	Rabbit
Reactivity	Human
Clonality	Polyclonal
Format	Lyophilized

Description

Rabbit IgG polyclonal antibody for Lipocalin-1(LCN1) detection. Tested with WB, IHC-P in Human.

Reconstitution

Add 0.2ml of distilled water will yield a concentration of 500ug/ml.

Anti-LCN1 Antibody - Additional Information

Gene ID 3933

Other Names

Lipocalin-1, Tear lipocalin, Tlc, Tear prealbumin, TP, Von Ebner gland protein, VEG protein, LCN1, VEGP

Calculated MW

19250 MW KDa

Application Details

Immunohistochemistry(Paraffin-embedded Section), 0.5-1 µg/ml, Human, By Heat
Western blot, 0.1-0.5 µg/ml, Human

Subcellular Localization

Secreted.

Tissue Specificity

Mainly expressed in lachrymal and salivary glands. Also expressed in the prostate.

Protein Name

Lipocalin-1

Contents

Each vial contains 5mg BSA, 0.9mg NaCl, 0.2mg Na₂HPO₄, 0.05mg Thimerosal, 0.05mg NaN₃.

Immunogen

A synthetic peptide corresponding to a sequence in the middle region of human LCN1(110-124aa HVKDHYIFYCEGELH).

Purification

Immunogen affinity purified.

Cross Reactivity

No cross reactivity with other proteins

Storage

At -20°C for one year. After reconstitution, at 4°C for one month. It can also be aliquotted and stored frozen at -20°C for a longer time. Avoid repeated freezing and thawing.

Anti-LCN1 Antibody - Protein Information

Name LCN1

Synonyms VEGP

Function

Could play a role in taste reception. Could be necessary for the concentration and delivery of sapid molecules in the gustatory system. Can bind various ligands, with chemical structures ranging from lipids and retinoids to the macrocyclic antibiotic rifampicin and even to microbial siderophores. Exhibits an extremely wide ligand pocket.

Cellular Location

Secreted.

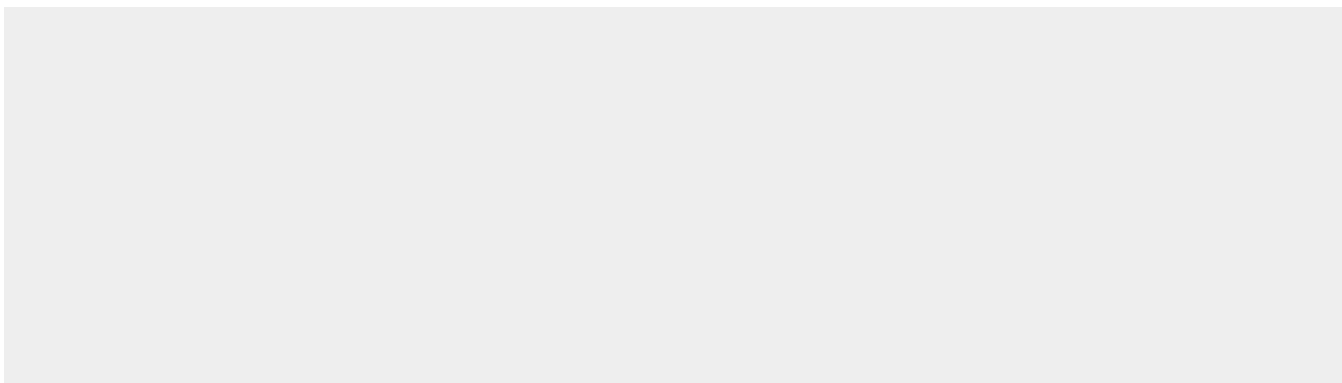
Tissue Location

Mainly expressed in lachrymal and salivary glands. Also expressed in the prostate

Anti-LCN1 Antibody - Protocols

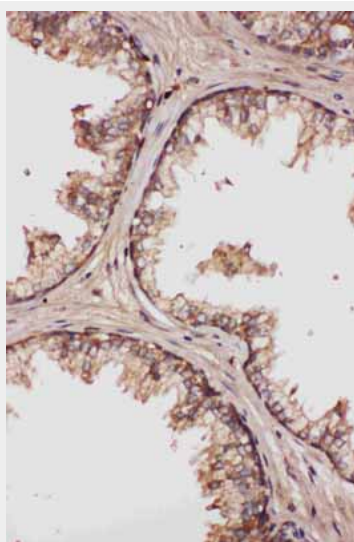
Provided below are standard protocols that you may find useful for product applications.

- [Western Blot](#)
- [Blocking Peptides](#)
- [Dot Blot](#)
- [Immunohistochemistry](#)
- [Immunofluorescence](#)
- [Immunoprecipitation](#)
- [Flow Cytometry](#)
- [Cell Culture](#)

Anti-LCN1 Antibody - Images



Anti-LCN1 antibody, ABO10974, Western blotting All lanes: Anti LCN1 (ABO10974) at 0.5ug/ml
Lane 1: JURKAT Whole Cell Lysate at 40ug
Lane 2: COLO320 Whole Cell Lysate at 40ug
Lane 3: SCG Whole Cell Lysate at 40ug
Lane 4: HELA Whole Cell Lysate at 40ug
Predicted bind size: 19KD
Observed bind size: 19KD



Anti-LCN1 antibody, ABO10974, IHC(P) IHC(P): Human Prostatic Cancer Tissue

Anti-LCN1 Antibody - Background

Lipocalin-1 (LCN1), also known as PREALBUMIN, TEAR or VEGP, is a protein that in humans is encoded by the LCN1 gene. Lipocalin-1 is a member of the lipocalin family of small secretory proteins, which is mapped on 9q34.3. Lipocalin-1 is the primary lipid binding protein in tears and is overproduced in response to multiple stimuli including infection and stress. It may be a marker for chromosome aneuploidy as well as an autoantigen in Sjogren's syndrome. LCN1 inhibits the cysteine-protease papain in vitro, similar to cystatins. And LCN1 plays a role in the nonimmunologic defense and in the control of inflammatory processes in oral and ocular tissues. The investigations presented the first clear evidence that LCN1 is induced in infection or inflammation and supported the idea that this lipocalin functions as a physiologic protection factor of epithelia in vivo.