

Anti-FGF21 Antibody
Catalog # ABO10987**Specification**

Anti-FGF21 Antibody - Product Information

Application	WB
Primary Accession	Q9NSA1
Host	Rabbit
Reactivity	Human, Mouse, Rat
Clonality	Polyclonal
Format	Lyophilized

Description

Rabbit IgG polyclonal antibody for Fibroblast growth factor 21(FGF21) detection. Tested with WB in Human.

Reconstitution

Add 0.2ml of distilled water will yield a concentration of 500ug/ml.

Anti-FGF21 Antibody - Additional Information

Gene ID 26291

Other Names

Fibroblast growth factor 21, FGF-21, FGF21

Calculated MW

22300 MW KDa

Application Details

Western blot, 0.1-0.5 µg/ml, Human, Mouse, Rat

Subcellular Localization

Secreted .

Protein Name

Fibroblast growth factor 21(FGF-21)

Contents

Each vial contains 5mg BSA, 0.9mg NaCl, 0.2mg Na₂HPO₄, 0.05mg Thimerosal, 0.05mg NaN₃.

Immunogen

A synthetic peptide corresponding to a sequence at the N-terminus of human FGF21(43-58aa QVRQRYLYTDDAQTE), different from the related rat and mouse sequences by two amino acids.

Purification

Immunogen affinity purified.

Cross Reactivity

No cross reactivity with other proteins

Storage

At -20°C for one year. After reconstitution, at 4°C for one month. It can also be aliquotted and stored frozen at -20°C for a longer time. Avoid repeated freezing and thawing.

Sequence Similarities

Belongs to the heparin-binding growth factors family.

Anti-FGF21 Antibody - Protein Information

Name FGF21

Function

Stimulates glucose uptake in differentiated adipocytes via the induction of glucose transporter SLC2A1/GLUT1 expression (but not SLC2A4/GLUT4 expression). Activity requires the presence of KLB. Regulates systemic glucose homeostasis and insulin sensitivity.

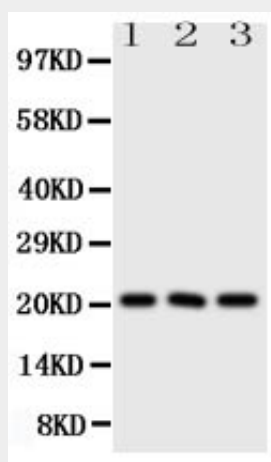
Cellular Location

Secreted {ECO:0000250|UniProtKB:Q9JJN1}.

Anti-FGF21 Antibody - Protocols

Provided below are standard protocols that you may find useful for product applications.

- [Western Blot](#)
- [Blocking Peptides](#)
- [Dot Blot](#)
- [Immunohistochemistry](#)
- [Immunofluorescence](#)
- [Immunoprecipitation](#)
- [Flow Cytometry](#)
- [Cell Culture](#)

Anti-FGF21 Antibody - Images

Anti-FGF21 antibody, ABO10987, Western blotting All lanes: Anti FGF21 (ABO10987) at 0.5ug/ml
Lane 1: A549 Whole Cell Lysate at 40ug
Lane 2: A431 Whole Cell Lysate at 40ug
Lane 3:

HEPA Whole Cell Lysate at 40ug Predicted bind size: 21KD Observed bind size: 21KD

Anti-FGF21 Antibody - Background

FGF21 (Fibroblast growth factor 21) is a protein that in humans is encoded by the FGF21 gene, which is also a member of the fibroblast growth factor (FGF) family. The FGF21 gene is mapped on 19q13.33. Using RT-PCR, Fgf21 was expressed in several types of adipose tissue in mice, including subcutaneous and epididymal fat pads and brown adipose tissue. The level of Fgf21 expression in adipose tissue was comparable to that in liver. FGF21 stimulates glucose uptake in adipocytes but not in other cell types. This effect is additive to the activity of insulin. FGF21 treatment of adipocytes is associated with phosphorylation of FRS2, a protein linking FGF receptors to the Ras/MAP kinase pathway. FGF21 also protects animals from diet-induced obesity when overexpressed in transgenic mice and lowers blood glucose and triglyceride levels when administered to diabetic rodents. Changes in Fgf21 expression due to suckling or nutritional manipulations were associated with changes in circulating free fatty acid and ketone body levels. In differentiated mouse brown adipocytes in culture, Fgf21 treatment increased the expression of thermogenic genes, caused higher total and uncoupled respiration, and enhanced glucose oxidation.