

Anti-KLK1 Antibody
Catalog # ABO11021**Specification**

Anti-KLK1 Antibody - Product Information

Application	WB, IHC-P
Primary Accession	P15947
Host	Rabbit
Reactivity	Mouse
Clonality	Polyclonal
Format	Lyophilized

Description

Rabbit IgG polyclonal antibody for Kallikrein-1(KLK1) detection. Tested with WB, IHC-P in Mouse.

Reconstitution

Add 0.2ml of distilled water will yield a concentration of 500ug/ml.

Anti-KLK1 Antibody - Additional Information

Gene ID 16612

Other Names

Kallikrein-1, 3.4.21.35, Glandular kallikrein K1, KAL-B, Renal kallikrein, Tissue kallikrein-6, mGK-6, Kik1, Kik-6, Kik6

Calculated MW

28775 MW KDa

Application Details

Immunohistochemistry(Paraffin-embedded Section), 0.5-1 µg/ml, Mouse, By Heat
Western blot, 0.1-0.5 µg/ml, Mouse

Protein Name

Kallikrein-1

Contents

Each vial contains 5mg BSA, 0.9mg NaCl, 0.2mg Na₂HPO₄, 0.05mg Thimerosal, 0.05mg NaN₃.

Immunogen

A synthetic peptide corresponding to a sequence at the C-terminus of mouse Kallikrein 1(243-261aa YTRVLNFNTWIRETMAEND).

Purification

Immunogen affinity purified.

Cross Reactivity

No cross reactivity with other proteins

Storage

At -20°C for one year. After r°Constitution,

at 4°C for one month. It can also be aliquotted and stored frozen at -20°C for a longer time. Avoid repeated freezing and thawing.

Sequence Similarities

Belongs to the peptidase S1 family. Kallikrein subfamily.

Anti-KLK1 Antibody - Protein Information

Name Klk1

Synonyms Klk-6, Klk6

Function

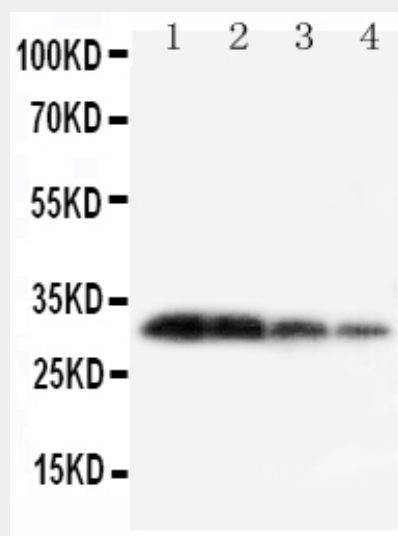
Glandular kallikreins cleave Met-Lys and Arg-Ser bonds in kininogen to release Lys-bradykinin.

Anti-KLK1 Antibody - Protocols

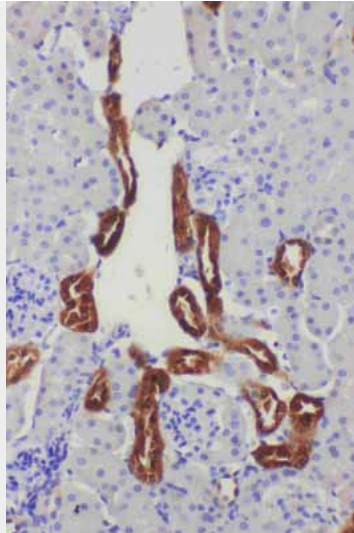
Provided below are standard protocols that you may find useful for product applications.

- [Western Blot](#)
- [Blocking Peptides](#)
- [Dot Blot](#)
- [Immunohistochemistry](#)
- [Immunofluorescence](#)
- [Immunoprecipitation](#)
- [Flow Cytometry](#)
- [Cell Culture](#)

Anti-KLK1 Antibody - Images



Anti-Kallikrein 1 antibody, ABO11021, Western blotting
Lane 1: Recombinant Mouse KLK1 Protein 10ng
Lane 2: Recombinant Mouse KLK1 Protein 5ng
Lane 3: Recombinant Mouse KLK1 Protein 2.5ng
Lane 4: Recombinant Mouse KLK1 Protein 1.25ng



Anti-Kallikrein 1 antibody, ABO11021, IHC(P)IHC(P): Mouse Kidney Tissue

Anti-KLK1 Antibody - Background

KLK1(KALLIKREIN 1), also called KLKR, is a protein that in humans is encoded by the KLK1 gene. KLK1 is a member of the peptidase S1 family. KLK1 is a serine protease that generates Lys-bradykinin by specific proteolysis of kininogen-1. The KLK1 gene is one of the fifteen kallikrein subfamily members located in a cluster on chromosome 19 and its exact cytogenetic location is 19q13.33. The KLK1 gene contains 5 coding exons. And KLK1 is the most centromeric gene in the cluster. Mice lacking tissue kallikrein are unable to generate significant levels of kinins in most tissues and develop cardiovascular abnormalities early in adulthood despite normal blood pressure. The protein is functionally conserved in its capacity to release the vasoactive peptide, Lys-bradykinin, from low molecular weight kininogen.