

Anti-MCM2 Antibody
Catalog # ABO11022**Specification**

Anti-MCM2 Antibody - Product Information

Application	IHC, WB, ICC
Primary Accession	P97310
Host	Rabbit
Reactivity	Mouse, Rat
Clonality	Polyclonal
Format	Lyophilized

Description

Rabbit IgG polyclonal antibody for DNA replication licensing factor MCM2(MCM2) detection. Tested with WB, IHC-P, ICC in Mouse;Rat.

Reconstitution

Add 0.2ml of distilled water will yield a concentration of 500ug/ml.

Anti-MCM2 Antibody - Additional Information

Gene ID 17216

Other Names

DNA replication licensing factor MCM2, 3.6.4.12, Minichromosome maintenance protein 2 homolog, Nuclear protein BM28, Mcm2, Bm28, Cdc11, Kiaa0030, Mcmd2

Calculated MW

102078 MW KDa

Application Details

Immunocytochemistry , 0.5-1 µg/ml, Mouse, Rat
Immunohistochemistry(Paraffin-embedded Section), 0.5-1 µg/ml, Mouse, Rat, By Heat
Western blot, 0.1-0.5 µg/ml, Mouse, Rat

Subcellular Localization

Nucleus .

Protein Name

DNA replication licensing factor MCM2

Contents

Each vial contains 5mg BSA, 0.9mg NaCl, 0.2mg Na₂HPO₄, 0.05mg Thimerosal, 0.05mg NaN₃.

Immunogen

A synthetic peptide corresponding to a sequence at the C-terminus of mouse MCM2(884-904aa DLFKFNKFSRDLKRKLILQQF), different from the related rat sequence by one amino acid.

Purification

Immunogen affinity purified.

Cross Reactivity

No cross reactivity with other proteins

Storage

At -20°C for one year. After reconstitution, at 4°C for one month. It can also be aliquotted and stored frozen at -20°C for a longer time. Avoid repeated freezing and thawing.

Sequence Similarities

Belongs to the MCM family.

Anti-MCM2 Antibody - Protein Information

Name Mcm2

Synonyms Bm28, Cdcl1, Kiaa0030, Mcmd2

Function

Acts as a component of the MCM2-7 complex (MCM complex) which is the replicative helicase essential for 'once per cell cycle' DNA replication initiation and elongation in eukaryotic cells. Core component of CDC45-MCM-GINS (CMG) helicase, the molecular machine that unwinds template DNA during replication, and around which the replisome is built. The active ATPase sites in the MCM2-7 ring are formed through the interaction surfaces of two neighboring subunits such that a critical structure of a conserved arginine finger motif is provided in trans relative to the ATP-binding site of the Walker A box of the adjacent subunit. The six ATPase active sites, however, are likely to contribute differentially to the complex helicase activity. Required for the entry in S phase and for cell division (PubMed: [10567526](http://www.uniprot.org/citations/10567526)). Plays a role in terminally differentiated hair cells development of the cochlea and induces cells apoptosis (By similarity).

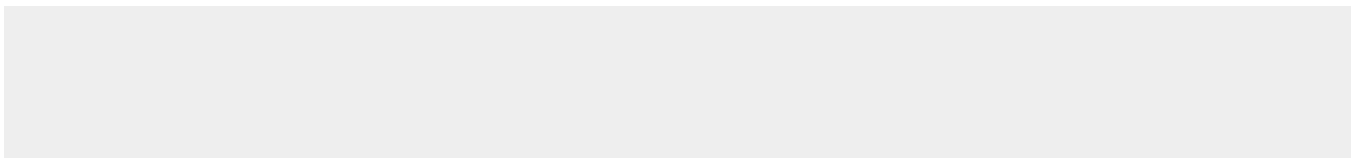
Cellular Location

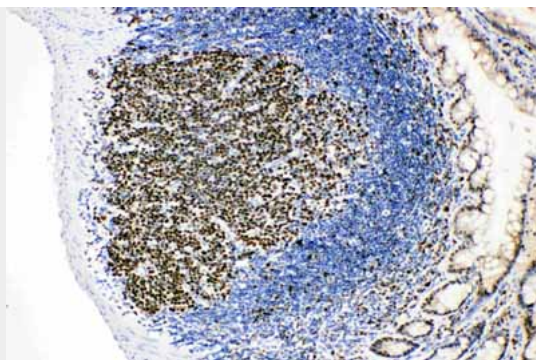
Nucleus {ECO:0000250|UniProtKB:P49736}. Chromosome {ECO:0000250|UniProtKB:P49736}. Note=Associated with chromatin before the formation of nuclei and detaches from it as DNA replication progresses. {ECO:0000250|UniProtKB:P55861}

Anti-MCM2 Antibody - Protocols

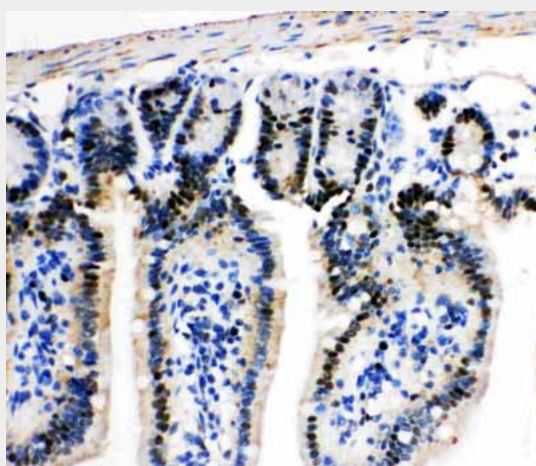
Provided below are standard protocols that you may find useful for product applications.

- [Western Blot](#)
- [Blocking Peptides](#)
- [Dot Blot](#)
- [Immunohistochemistry](#)
- [Immunofluorescence](#)
- [Immunoprecipitation](#)
- [Flow Cytometry](#)
- [Cell Culture](#)

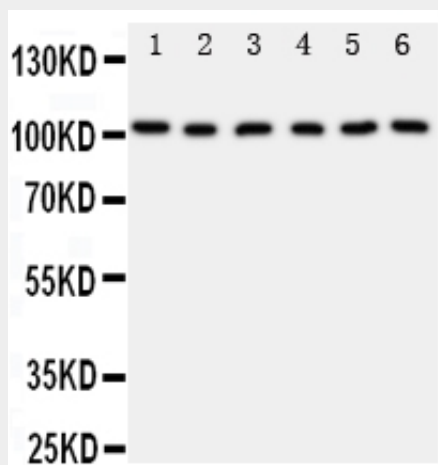
Anti-MCM2 Antibody - Images



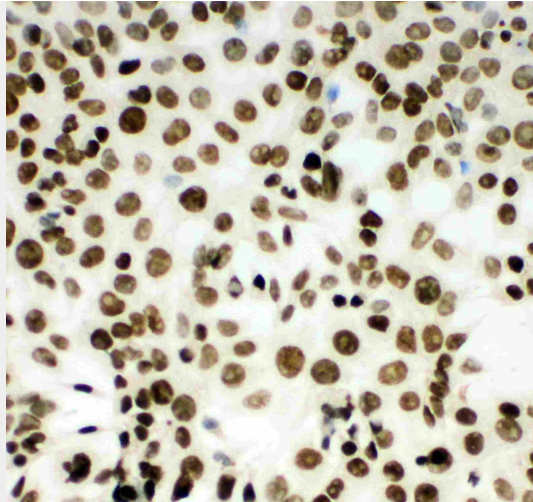
Anti-MCM2 antibody, ABO11022, IHC(P)IHC(P): Rat Intestinal Lymphocyte Tissue



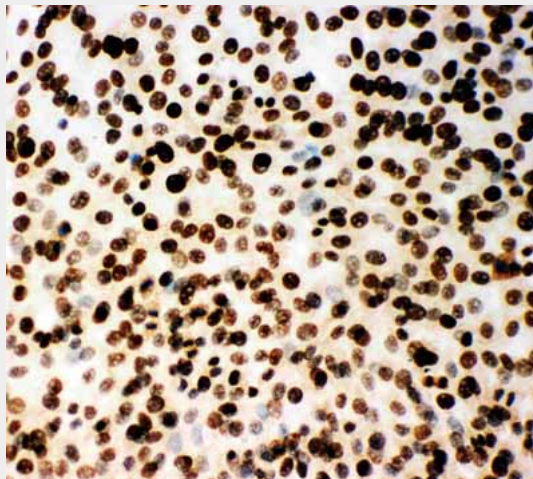
Anti-MCM2 antibody, ABO11022, IHC(P)IHC(P): Mouse Intestine Tissue



Anti-MCM2 antibody, ABO11022, Western blottingAll lanes: Anti MCM2 (ABO11022) at 0.5ug/ml
Lane 1: Rat Testis Tissue Lysate at 50ug
Lane 2: Rat Kidney Tissue Lysate at 50ug
Lane 3: Mouse Intestine Tissue Lysate at 50ug
Lane 4: Mouse Testis Tissue Lysate at 50ug
Lane 5: Mouse Ovary Tissue Lysate at 50ug
Lane 6: Mouse Kidney Tissue Lysate at 50ug
Predicted bind size: 102KD
Observed bind size: 102KD



Anti-MCM2 antibody, ABO11022, ICCICC: HEPA Cell



Anti-MCM2 antibody, ABO11022, ICCICC: NIH3T3 Cell

Anti-MCM2 Antibody - Background

MCM2(MINICHROMOSOME MAINTENANCE, S. CEREVISIAE, HOMOLOG OF, 2),also known as MITOTIN, CDCL1 or BM28, is a human nuclear protein that plays an important role in 2 crucial steps of the cell cycle, namely, onset of DNA replication and cell division. And it is similar to members of the family of early S-phase proteins. The MCM2 gene is mapped to 3q21.3. The hexameric protein complex formed by MCM proteins is a key component of the pre-replication complex(pre-RC) and may be involved in the formation of replication forks and in the recruitment of other DNA replication related proteins. In the G0 stage, the MCM2 and MCM5 proteins were much less abundant than the MCM7 and MCM3 proteins, which suggests that the MCM proteins are not present in stoichiometric amounts and that only a proportion of these molecules actively participate in cell cycle regulation as part of MCM complexes.